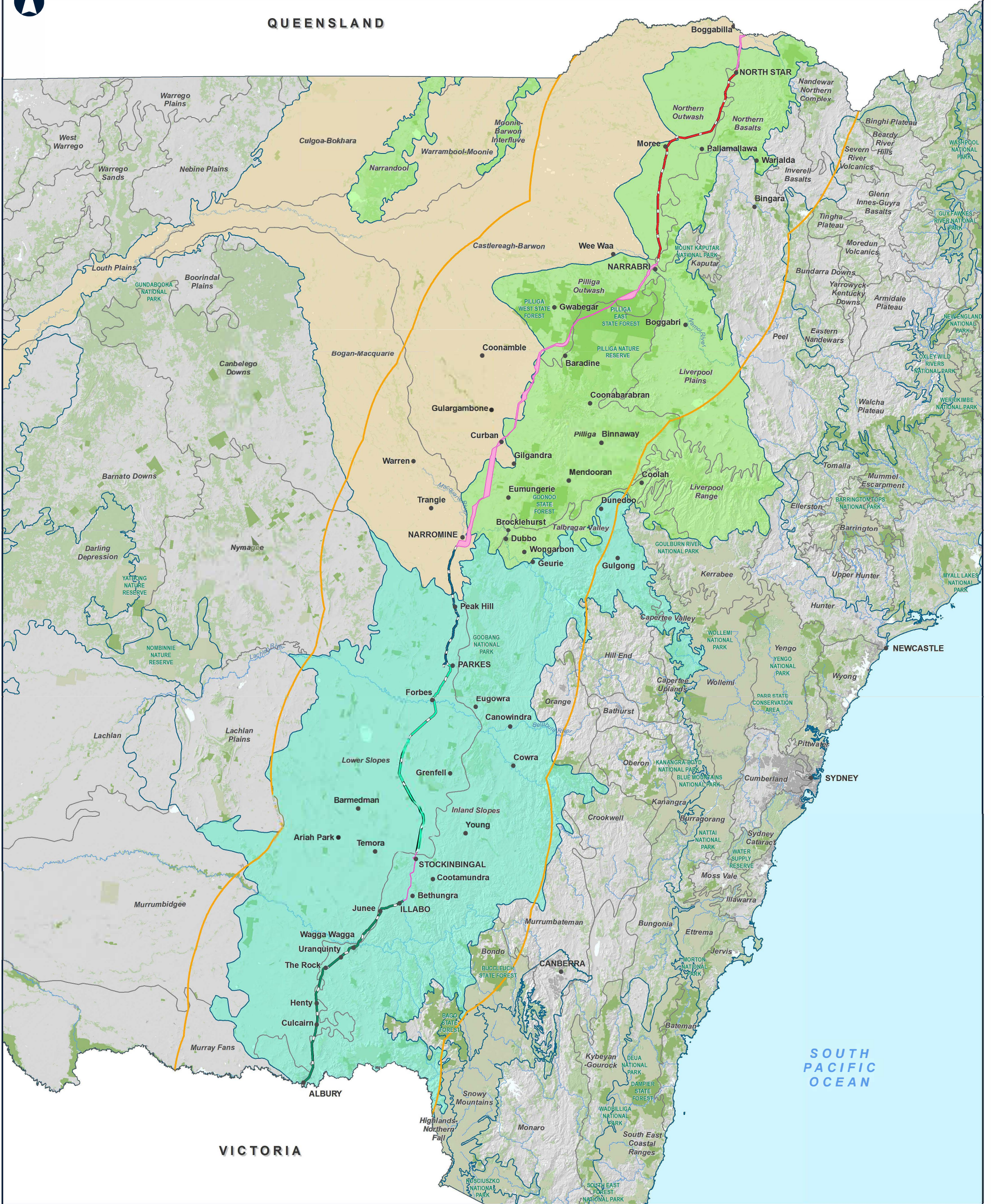




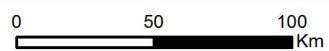
# QUEENSLAND



## NSW Inland Rail Route

## IBRA Regions and Biodiversity Offsets

MAP 1 of 1



Coordinate System: GDA 1994 MGA Zone 55

ARTC makes no representation or warranty and assumes no duty of care or other responsibility to any party as to the completeness, accuracy or suitability of the information contained in this GIS map. The GIS map has been prepared from material provided to ARTC by an external source and ARTC has not taken any steps to verify the completeness, accuracy or suitability of that material. ARTC will not be responsible for any loss or damage suffered as a result of any person whatsoever placing reliance upon the information contained within this GIS map.

Date: 15/10/2019

Paper: A3

Author: IR GIS

Scale: 1:2,750,000

Data Sources: Geoscience Australia, IBRA 7 update program was coordinated by Auricht Projects in cooperation with Australian Government and State/Territory environment and conservation agencies.

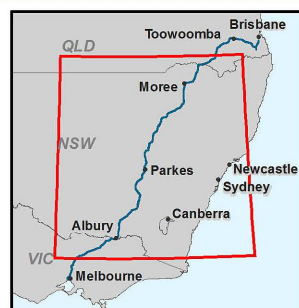
- N2NS alignment
- P2N alignment
- S2P alignment
- A2I alignment
- Alignment \ Study area buffer - 100 km
- I2S and N2N Study areas

### IBRA Region (IR)

- Brigalow Belt South
- Darling Riverine Plains
- NSW South Western Slopes
- IBRA7 Sub-Region

### Reserve

- Forestry reserve
- Nature conservation area



**INLAND RAIL** **ARTC**

The Australian Government is delivering Inland Rail through the Australian Rail Track Corporation (ARTC), in partnership with the private sector.