

# Appendix B

## Design Conditions Flood Maps

*B01 – Flood Level Change (Afflux) 18% AEP*

*B02 – Flood Level Change (Afflux) 5% AEP*

*B03 – Flood Level Change (Afflux) 2% AEP*

*B04 – Flood Level Change (Afflux) 0.05% AEP*

*B05 – Flood Velocity Change 18% AEP*

*B06 – Flood Velocity Change 5% AEP*

*B07 – Flood Velocity Change 2% AEP*

*B08 – Flood Velocity Change 0.05% AEP*

*B09 – Flood Duration Change 18% AEP*

*B10 – Flood Duration Change 5% AEP*

*B11 – Flood Duration Change 2% AEP*


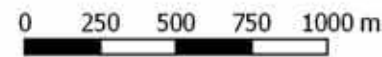

*B12 – Flood Duration Change 0.05% AEP*









For Information Only

	 1:25,000		Date: 25/3/2019	<b>Inland Rail - Parkes to Narromine</b> IFC - Cross Drainage Flood Impact Assessment Results  <b>Figure DE18VC1</b> 18% AEP Percentage Change In Velocity - CH 450.00	
	Coordinate system: GDA 1994 MGA Zone 55 Inset Aerial Source: NSW Six Map Scale ratio correct when printed at A3		Rev: B - For Information Only		
			Prepared By: YeohM		





For Information Only

	0 250 500 750 1000 m 1:25,000 Coordinate system: GDA 1994 MGA Zone 55 Inset Aerial Source: NSW Six Map Scale ratio correct when printed at A3		Date: 25/3/2019	<b>Inland Rail - Parkes to Narromine</b> IFC - Cross Drainage Flood Impact Assessment Results <b>Figure DE18VC2</b> 18% AEP Percentage Change In Velocity - CH 455.00
	Rev: B - For Information Only			
	Prepared By: YeohM			





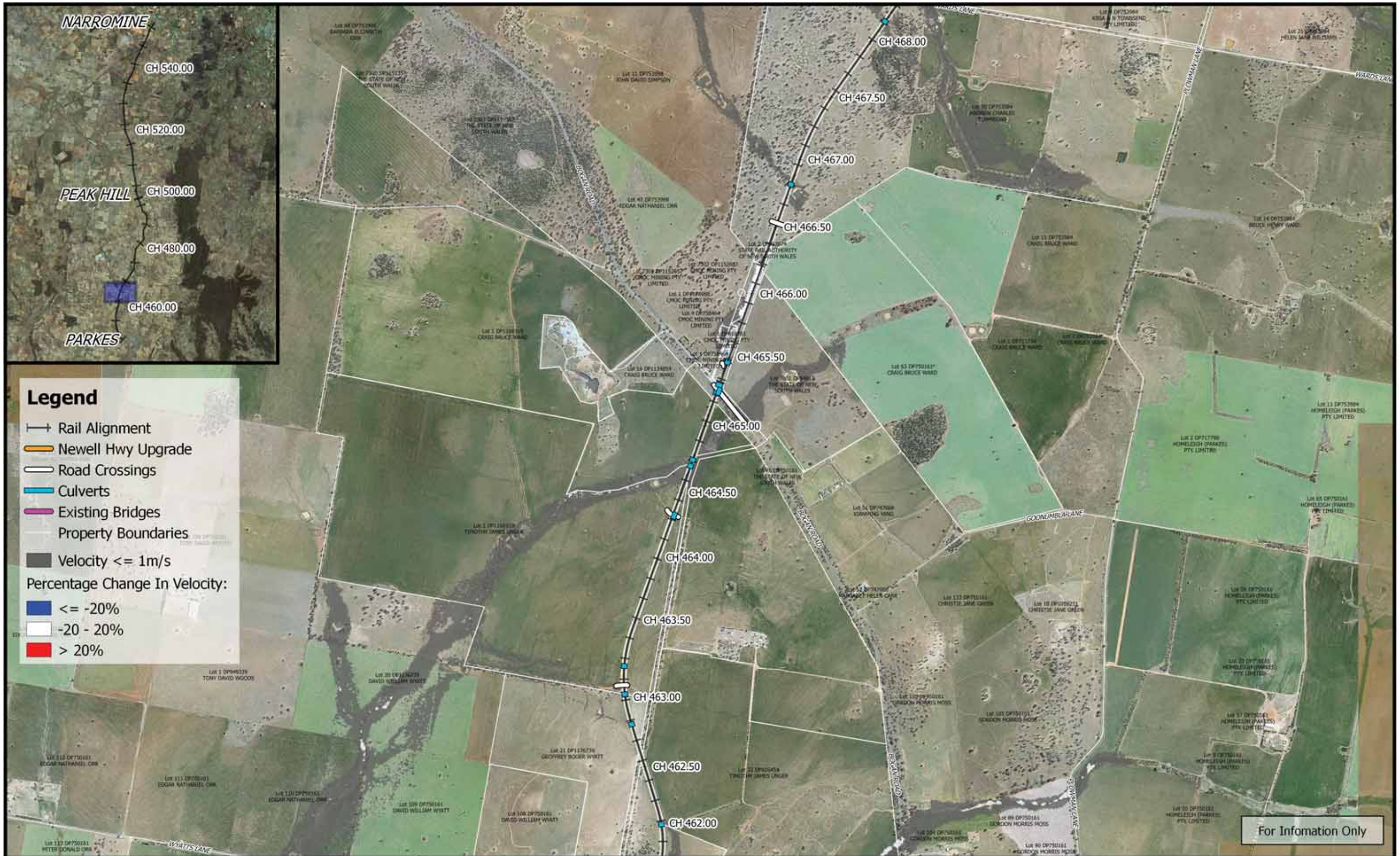
**Legend**

- +— Rail Alignment
- Newell Hwy Upgrade
- Road Crossings
- Culverts
- Existing Bridges
- Property Boundaries
- Velocity <= 1m/s
- Percentage Change In Velocity:
- <= -20%
- -20 - 20%
- > 20%


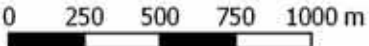

For Information Only

	<p>0 250 500 750 1000 m</p> <p>1:25,000</p> <p>Coordinate system: GDA 1994 MGA Zone 55 Inset Aerial Source: NSW Six Map Scale ratio correct when printed at A3</p>		Date: 25/3/2019	<p><b>Inland Rail - Parkes to Narromine</b> IFC - Cross Drainage Flood Impact Assessment Results</p> <p><b>Figure DE18VC3</b> 18% AEP Percentage Change In Velocity - CH 460.00</p>
			Rev: B - For Information Only	
			Prepared By: YeohM	





For Information Only

	 1:25,000 Coordinate system: GDA 1994 MGA Zone 55 Inset Aerial Source: NSW Six Map Scale ratio correct when printed at A3		Date: 25/3/2019	<b>Inland Rail - Parkes to Narromine</b> IFC - Cross Drainage Flood Impact Assessment Results <b>Figure DE18VC4</b> 18% AEP Percentage Change In Velocity - CH 465.00
			Rev: B - For Information Only	
			Prepared By: YeohM	

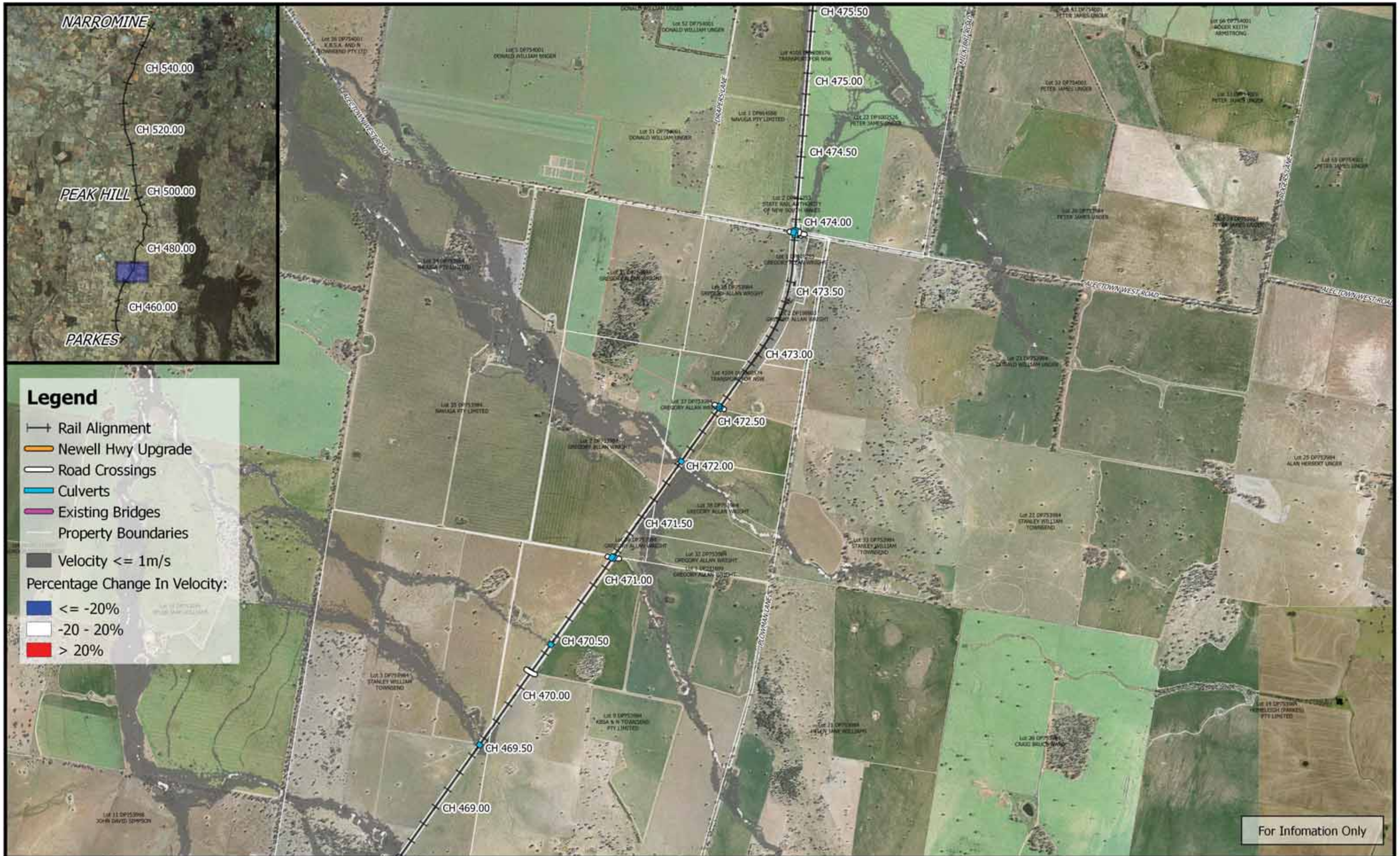




For Information Only

	<p>0 250 500 750 1000 m</p> <p>1:25,000</p> <p>Coordinate system: GDA 1994 MGA Zone 55 Inset Aerial Source: NSW Six Map Scale ratio correct when printed at A3</p>		Date: 25/3/2019	<p><b>Inland Rail - Parkes to Narromine</b> IFC - Cross Drainage Flood Impact Assessment Results</p> <p><b>Figure DE18VC5</b> 18% AEP Percentage Change In Velocity - CH 470.00</p>
			Rev: B - For Information Only	
			Prepared By: YeohM	


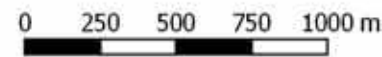





**Legend**

- +— Rail Alignment
- Newell Hwy Upgrade
- Road Crossings
- Culverts
- Existing Bridges
- Property Boundaries
- Velocity <= 1m/s
- Percentage Change In Velocity:
- <= -20%
- -20 - 20%
- > 20%

For Information Only

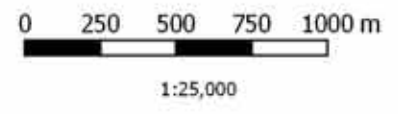
	 1:25,000		Date: 25/3/2019	<b>Inland Rail - Parkes to Narromine</b> IFC - Cross Drainage Flood Impact Assessment Results  <b>Figure DE18VC6</b> <i>18% AEP Percentage Change In Velocity - CH 472.00</i>
	Coordinate system: GDA 1994 MGA Zone 55 Inset Aerial Source: NSW Six Map Scale ratio correct when printed at A3		Rev: B - For Information Only	
	Prepared By: YeohM			





**Legend**

- +— Rail Alignment
- Newell Hwy Upgrade
- Road Crossings
- Culverts
- Existing Bridges
- Property Boundaries
- Velocity <= 1m/s
- Percentage Change In Velocity:
- <= -20%
- -20 - 20%
- > 20%



Coordinate system: GDA 1994 MGA Zone 55  
 Inset Aerial Source: NSW Six Map  
 Scale ratio correct when printed at A3



Date: 25/3/2019  
 Rev: B - For Information Only  
 Prepared By: YeohM

**Inland Rail - Parkes to Narromine**  
 IFC - Cross Drainage Flood Impact Assessment Results

**Figure DE18VC7**  
 18% AEP Percentage Change In Velocity - CH 475.00





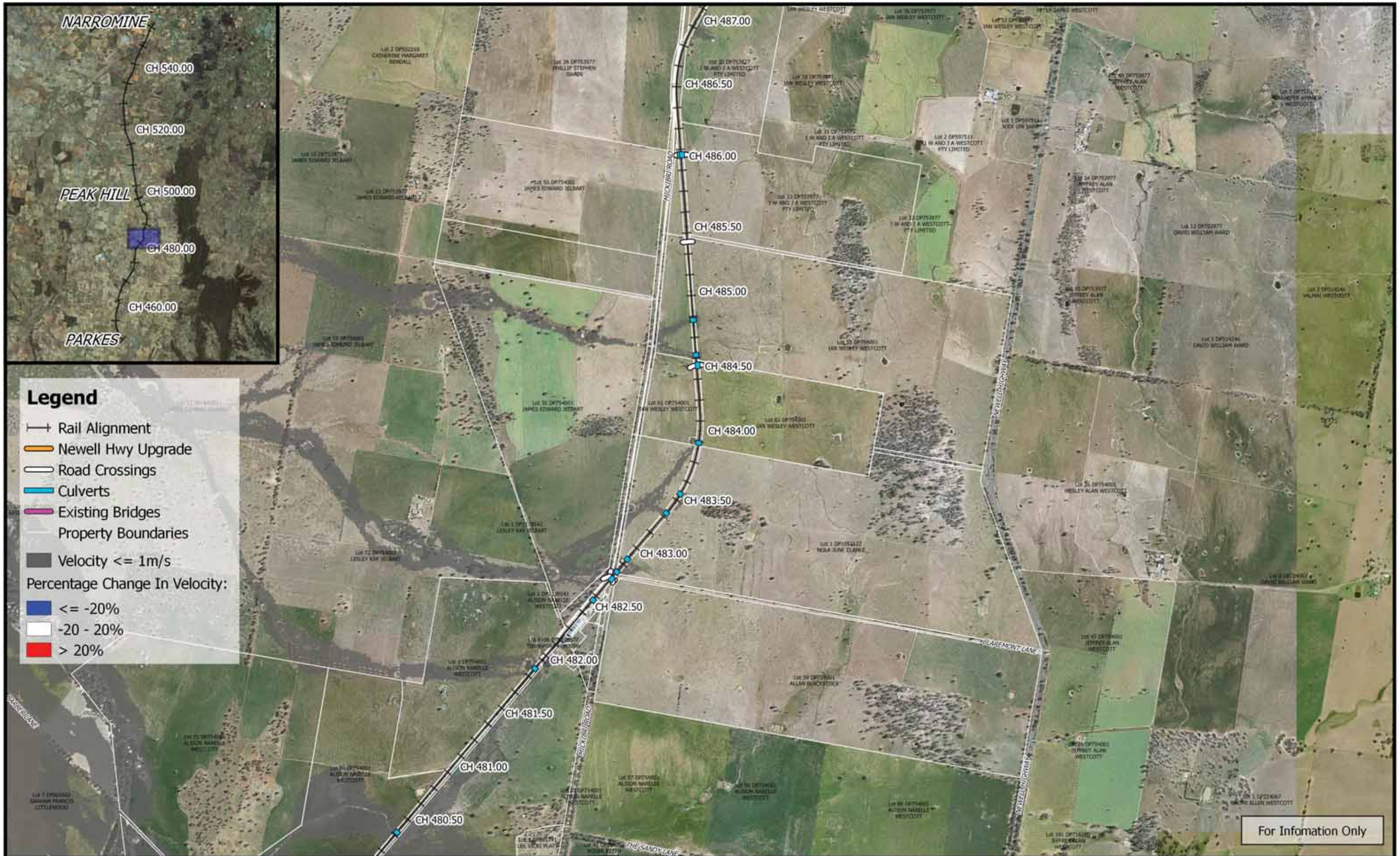
**Legend**

- +— Rail Alignment
- Newell Hwy Upgrade
- Road Crossings
- Culverts
- Existing Bridges
- Property Boundaries
- Velocity <= 1m/s
- Percentage Change In Velocity:
- <= -20%
- -20 - 20%
- > 20%

For Information Only

	<p>1:25,000</p>		Date: 25/3/2019	<p style="text-align: center;"><b>Inland Rail - Parkes to Narromine</b> IFC - Cross Drainage Flood Impact Assessment Results</p> <p style="text-align: center;"><b>Figure DE18VC8</b> 18% AEP Percentage Change In Velocity - CH 480.00</p>	
	Coordinate system: GDA 1994 MGA Zone 55 Inset Aerial Source: NSW Six Map Scale ratio correct when printed at A3		Rev: B - For Information Only		
			Prepared By: YeohM		





**Legend**

- +— Rail Alignment
- Newell Hwy Upgrade
- Road Crossings
- Culverts
- Existing Bridges
- Property Boundaries
- Velocity <= 1m/s

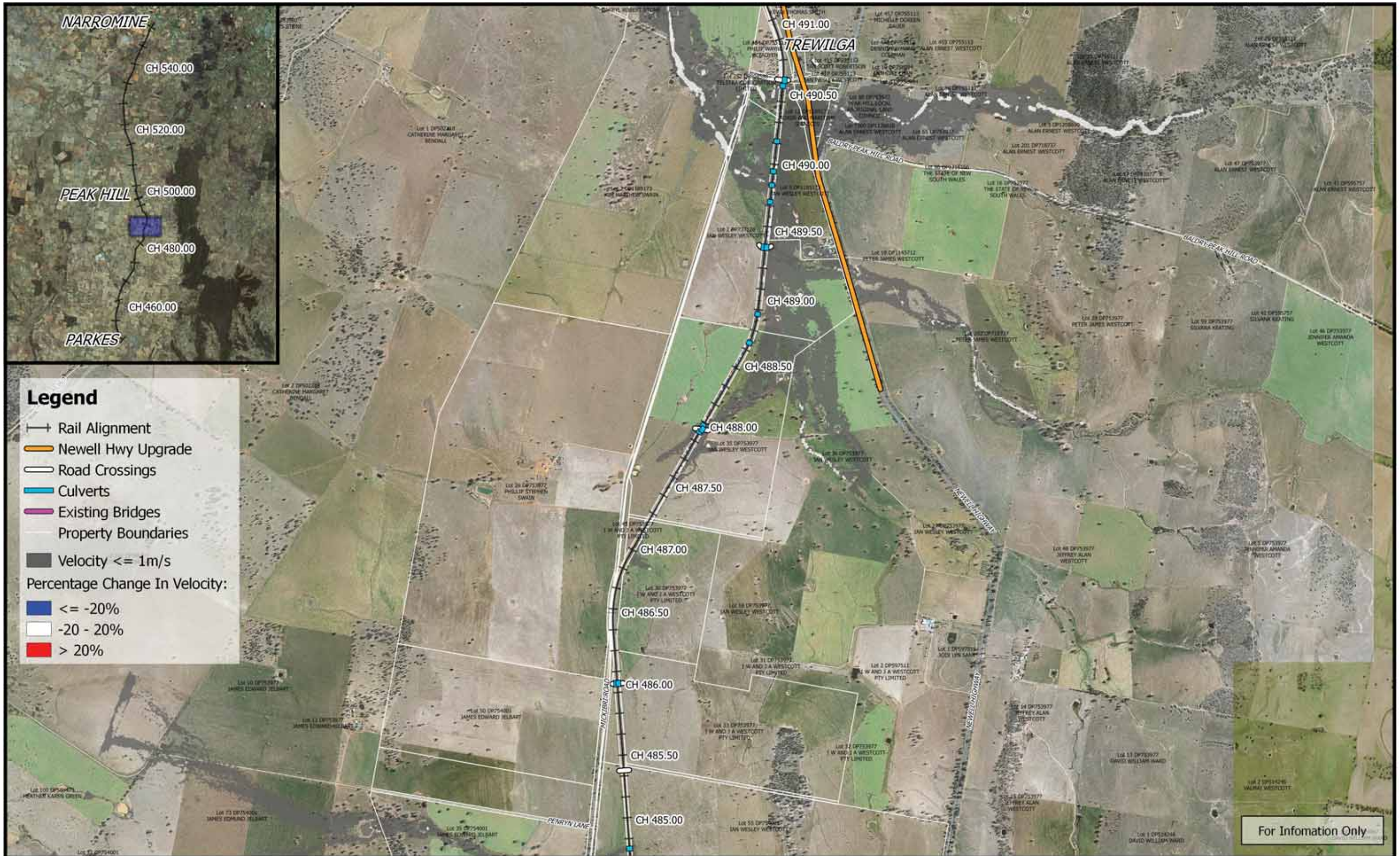
Percentage Change In Velocity:

- Blue: <= -20%
- White: -20 - 20%
- Red: > 20%

For Information Only

	<p>1:25,000</p>		Date: 25/3/2019	<p style="text-align: center;"><b>Inland Rail - Parkes to Narromine</b> IFC - Cross Drainage Flood Impact Assessment Results</p> <p style="text-align: center;"><b>Figure DE18VC9</b> 18% AEP Percentage Change In Velocity - CH 485.00</p>	
	Coordinate system: GDA 1994 MGA Zone 55 Inset Aerial Source: NSW Six Map Scale ratio correct when printed at A3		Rev: B - For Information Only		
			Prepared By: YeohM		







**Legend**

- +— Rail Alignment
- Newell Hwy Upgrade
- Road Crossings
- Culverts
- Existing Bridges
- Property Boundaries
- Velocity <= 1m/s
- Percentage Change In Velocity:
- <= -20%
- -20 - 20%
- > 20%

For Information Only

	<p>0 250 500 750 1000 m</p> <p>1:25,000</p> <p>Coordinate system: GDA 1994 MGA Zone 55 Inset Aerial Source: NSW Six Map Scale ratio correct when printed at A3</p>		<p>Date: 25/3/2019</p> <p>Rev: B - For Information Only</p> <p>Prepared By: YeohM</p>	<p><b>Inland Rail - Parkes to Narromine</b> IFC - Cross Drainage Flood Impact Assessment Results</p> <p><b>Figure DE18VC10</b> 18% AEP Percentage Change In Velocity - CH 490.00</p>
---	--	--	---	--





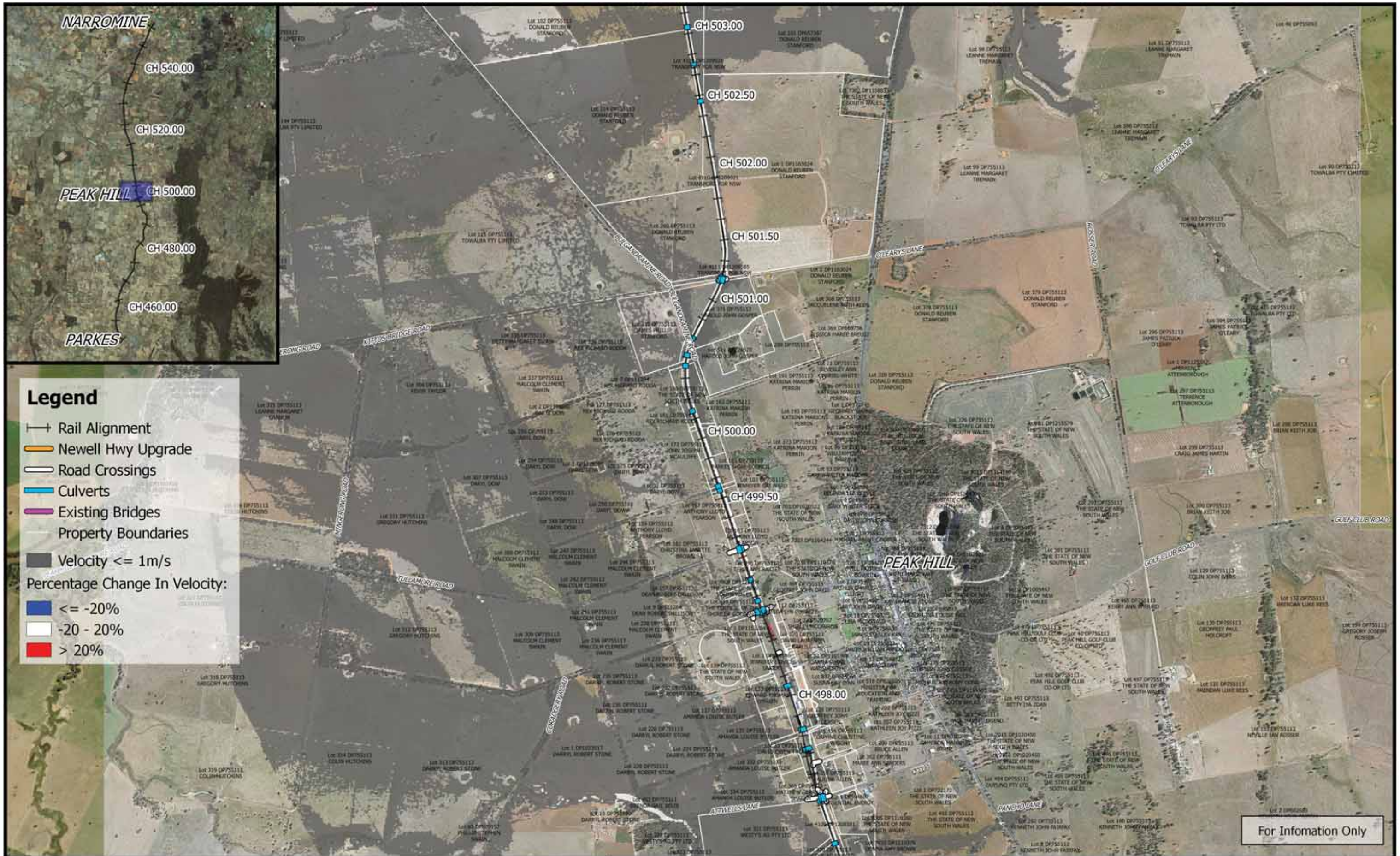
	<p>1:25,000</p>		Date: 25/3/2019	<p><b>Inland Rail - Parkes to Narromine</b> IFC - Cross Drainage Flood Impact Assessment Results</p> <p><b>Figure DE18VC11</b> 18% AEP Percentage Change In Velocity - CH 492.00</p>	
	Coordinate system: GDA 1994 MGA Zone 55 Inset Aerial Source: NSW Six Map Scale ratio correct when printed at A3		Rev: B - For Information Only		
			Prepared By: YeohM		





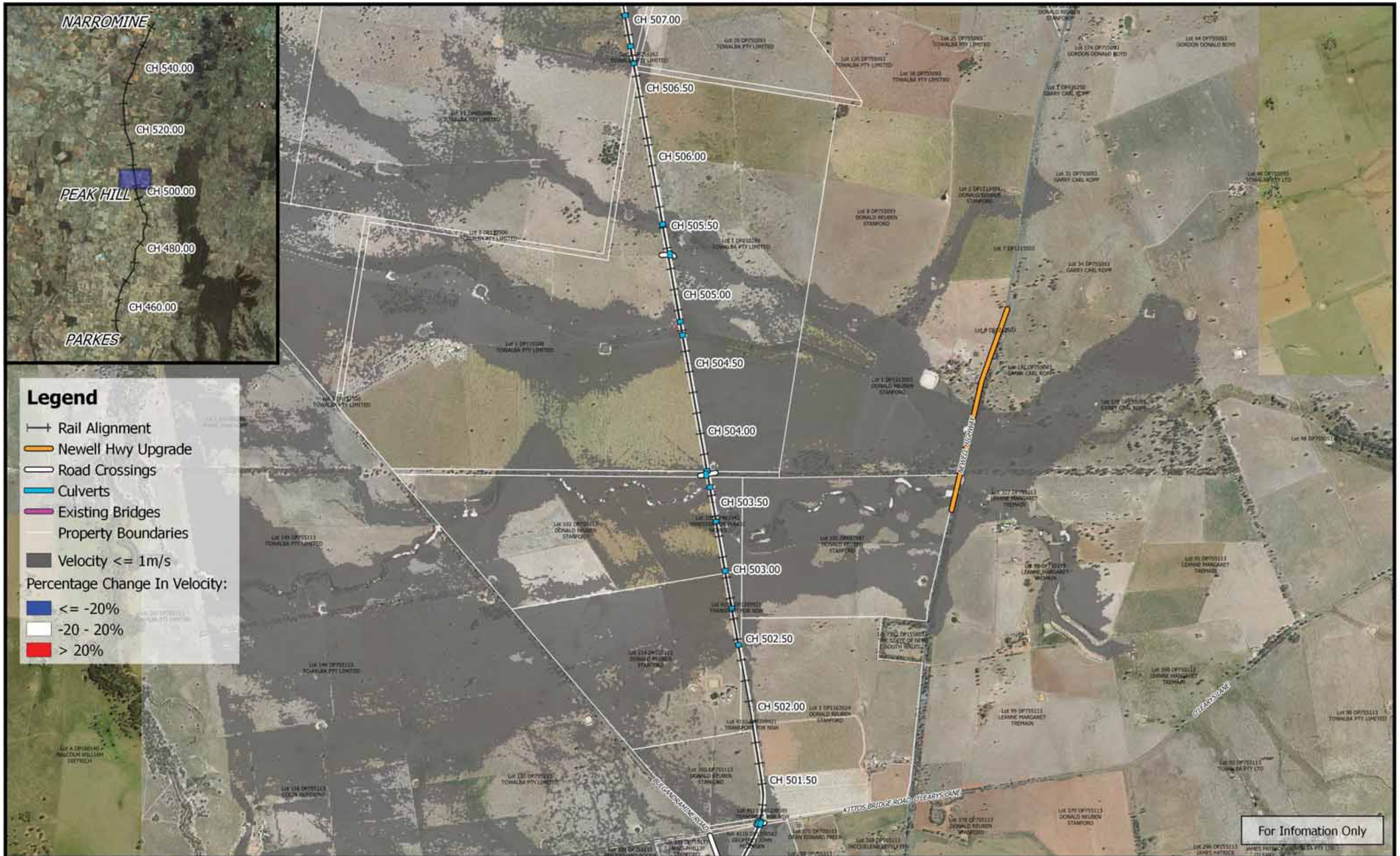
	<p>1:25,000</p>		Date: 25/3/2019	<p align="center"><b>Inland Rail - Parkes to Narromine</b> IFC - Cross Drainage Flood Impact Assessment Results</p> <p align="right"><b>Figure DE18VC12</b> 18% AEP Percentage Change In Velocity - CH 495.00</p>
	Coordinate system: GDA 1994 MGA Zone 55 Inset Aerial Source: NSW Six Map Scale ratio correct when printed at A3		Rev: B - For Information Only	
	Prepared By: YeohM			







	 1:25,000		Date: 25/3/2019	<b>Inland Rail - Parkes to Narromine</b> IFC - Cross Drainage Flood Impact Assessment Results <b>Figure DE18VC13</b> 18% AEP Percentage Change In Velocity - CH 500.00
	Coordinate system: GDA 1994 MGA Zone 55 Inset Aerial Source: NSW Six Map Scale ratio correct when printed at A3		Rev: B - For Information Only	
	Prepared By: YeohM			





	<p>0 250 500 750 1000 m</p> <p>1:25,000</p> <p>Coordinate system: GDA 1994 MGA Zone 55 Inset Aerial Source: NSW Six Map Scale ratio correct when printed at A3</p>		Date: 25/3/2019	<p><b>Inland Rail - Parkes to Narromine</b> IFC - Cross Drainage Flood Impact Assessment Results</p> <p><b>Figure DE18VC14</b> 18% AEP Percentage Change In Velocity - CH 505.00</p>
			Rev: B - For Information Only	
Prepared By: YeohM				





	<p>0 250 500 750 1000 m</p> <p>1:25,000</p> <p>Coordinate system: GDA 1994 MGA Zone 55 Inset Aerial Source: NSW Six Map Scale ratio correct when printed at A3</p>		Date: 25/3/2019	<p><b>Inland Rail - Parkes to Narromine</b> IFC - Cross Drainage Flood Impact Assessment Results</p> <p><b>Figure DE18VC15</b> 18% AEP Percentage Change In Velocity - CH 510.00</p>
			Rev: B - For Information Only	
			Prepared By: YeohM	


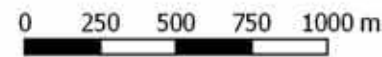





**Legend**

- +— Rail Alignment
- Newell Hwy Upgrade
- Road Crossings
- Culverts
- Existing Bridges
- Property Boundaries
- Velocity <= 1m/s
- Percentage Change In Velocity:
- <= -20%
- -20 - 20%
- > 20%

For Information Only

	 1:25,000		Date: 26/3/2019	<b>Inland Rail - Parkes to Narromine</b> IFC - Cross Drainage Flood Impact Assessment Results  <b>Figure DE18VC16</b> 18% AEP Percentage Change In Velocity - CH 512.00
	Coordinate system: GDA 1994 MGA Zone 55 Inset Aerial Source: NSW Six Map Scale ratio correct when printed at A3		Rev: B - For Information Only	
	Prepared By: YeohM			





**Legend**

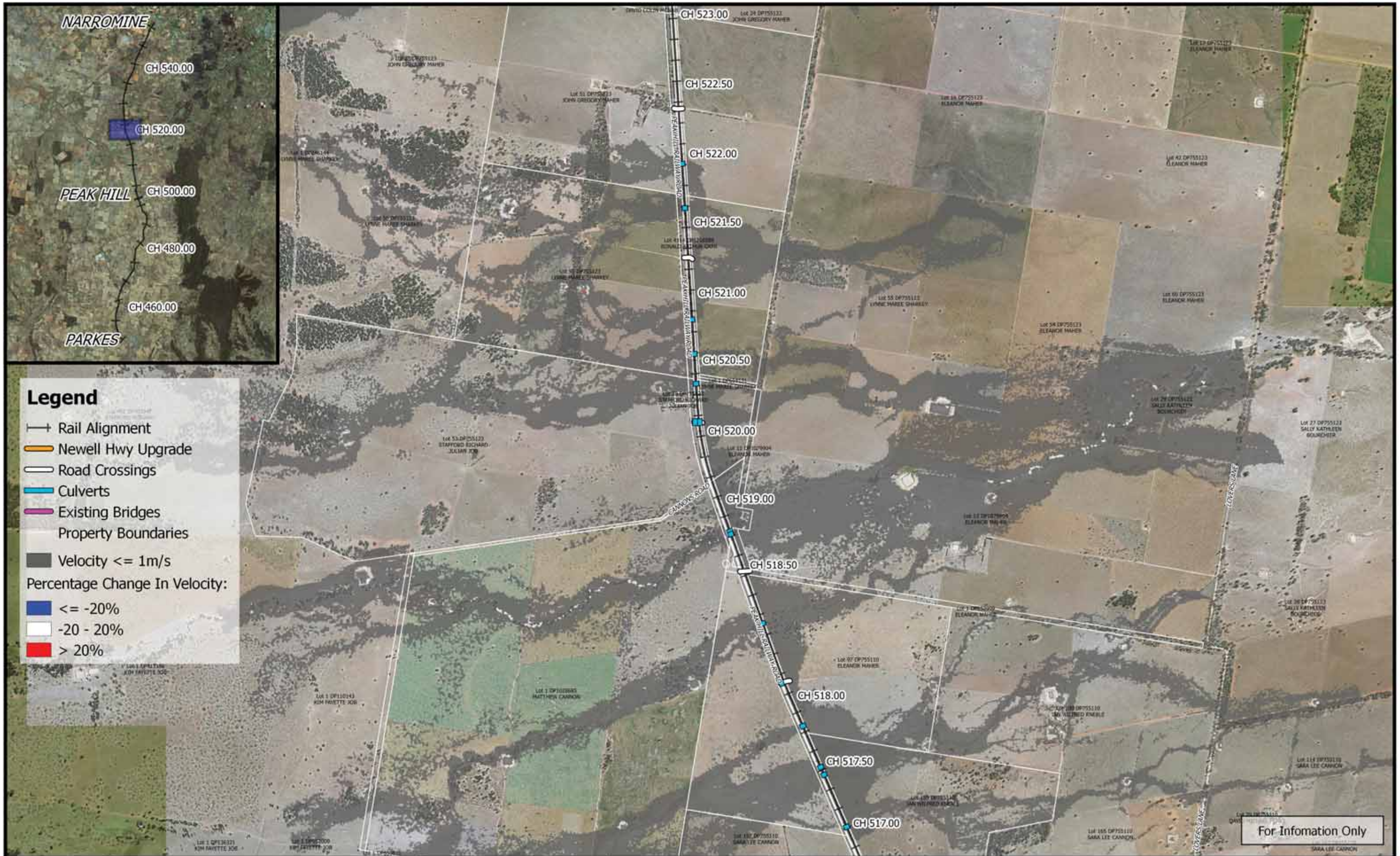
- Rail Alignment
- Newell Hwy Upgrade
- Road Crossings
- Culverts
- Existing Bridges
- Property Boundaries
- Velocity <= 1m/s
- Percentage Change In Velocity:
- <= -20%
- -20 - 20%
- > 20%

For Information Only

	<p>1:25,000</p>		Date: 25/3/2019	<p style="text-align: center;"><b>Inland Rail - Parkes to Narromine</b> IFC - Cross Drainage Flood Impact Assessment Results</p> <p style="text-align: center;"><b>Figure DE18VC17</b> 18% AEP Percentage Change In Velocity - CH 515.00</p>	
	Coordinate system: GDA 1994 MGA Zone 55 Inset Aerial Source: NSW Six Map Scale ratio correct when printed at A3		Rev: B - For Information Only		
			Prepared By: YeohM		

E:\122\diverg\12\DR\_P2\101 WPF\Flooding and Drainage\GIS Mapping\Individual Property Maps\Maping\_Full\_Project\ags - 2.18.18





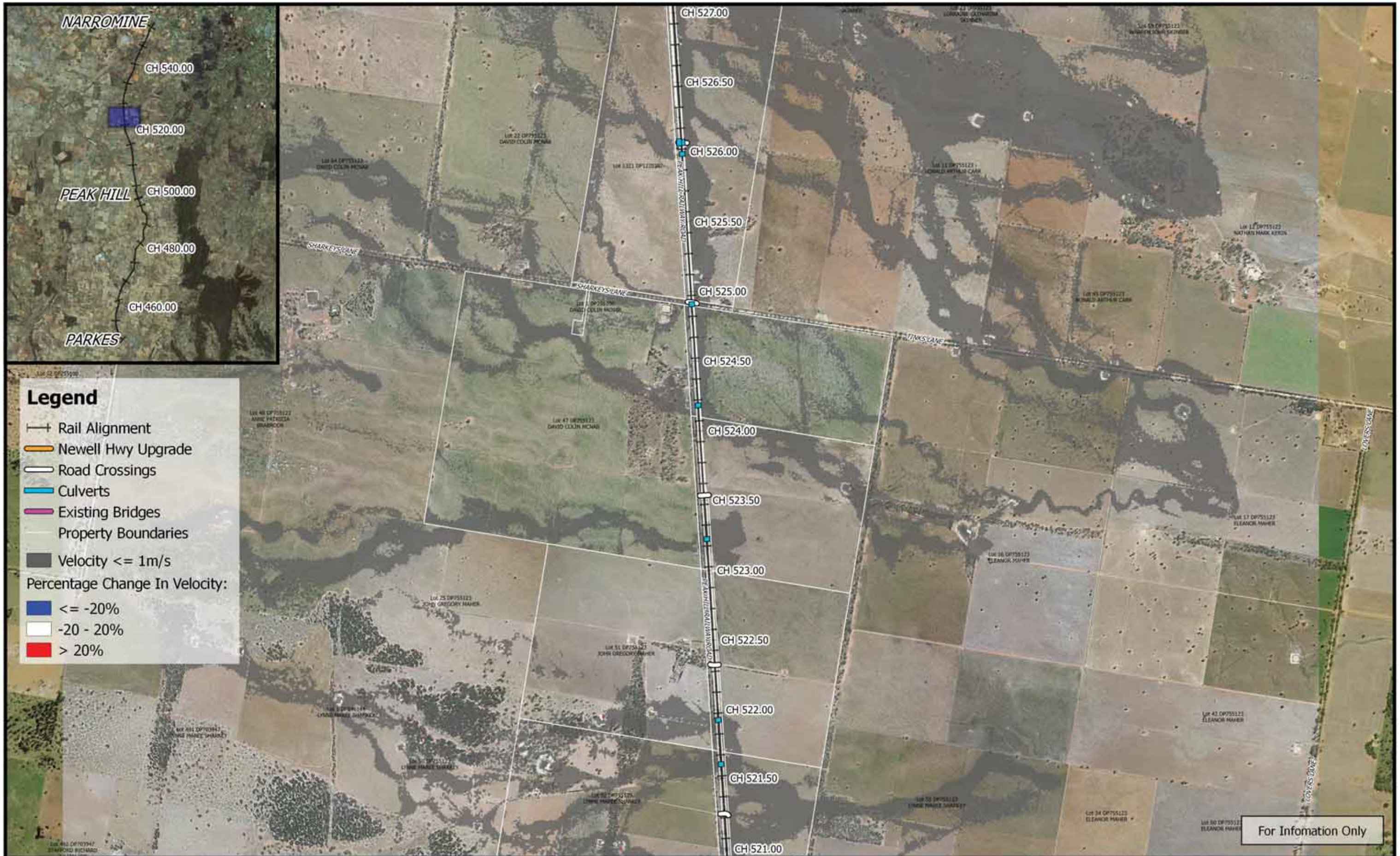
**Legend**

- +— Rail Alignment
- Newell Hwy Upgrade
- Road Crossings
- Culverts
- Existing Bridges
- Property Boundaries
- Velocity  $\leq 1\text{m/s}$
- Percentage Change In Velocity:
- $\leq -20\%$
- $-20 - 20\%$
- $> 20\%$

For Information Only

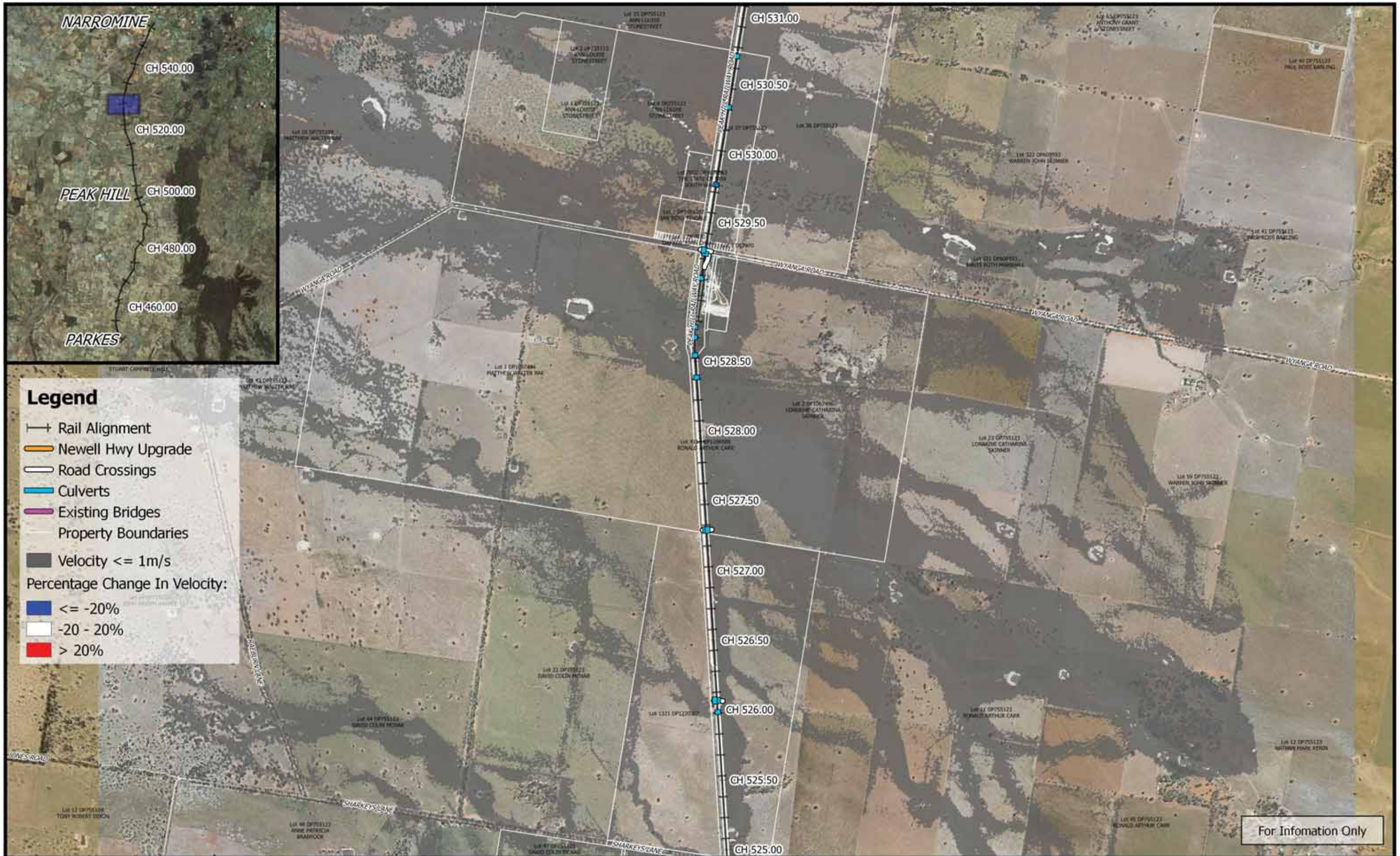
	<p>1:25,000</p>		Date: 25/3/2019	<p><b>Inland Rail - Parkes to Narromine</b> IFC - Cross Drainage Flood Impact Assessment Results</p> <p><b>Figure DE18VC18</b> 18% AEP Percentage Change In Velocity - CH 520.00</p>	
	Coordinate system: GDA 1994 MGA Zone 55 Inset Aerial Source: NSW Six Map Scale ratio correct when printed at A3		Rev: B - For Information Only		
			Prepared By: YeohM		





	<p>0 250 500 750 1000 m</p> <p>1:25,000</p> <p>Coordinate system: GDA 1994 MGA Zone 55 Inset Aerial Source: NSW Six Map Scale ratio correct when printed at A3</p>		Date: 25/3/2019	<p><b>Inland Rail - Parkes to Narromine</b> IFC - Cross Drainage Flood Impact Assessment Results</p> <p><b>Figure DE18VC19</b> 18% AEP Percentage Change In Velocity - CH 525.00</p>
			Rev: B - For Information Only	
			Prepared By: YeohM	





	<p>0 250 500 750 1000 m</p> <p>1:25,000</p> <p>Coordinate system: GDA 1994 MGA Zone 55 Inset Aerial Source: NSW Six Map Scale ratio correct when printed at A3</p>		Date: 25/3/2019	<p><b>Inland Rail - Parkes to Narromine</b> IFC - Cross Drainage Flood Impact Assessment Results</p>
			Rev: B - For Information Only	
			Prepared By: YeohM	





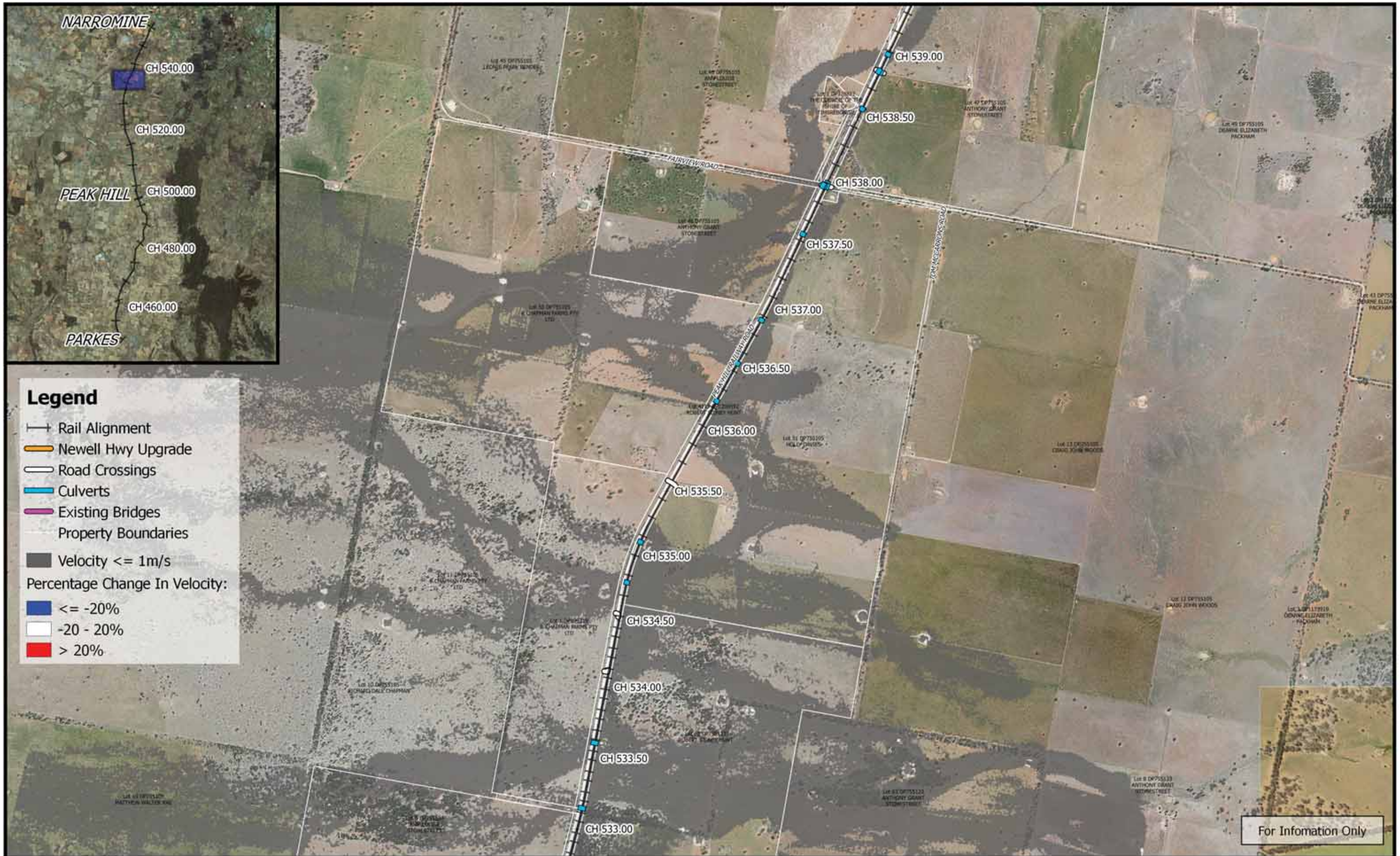
**Legend**

- +— Rail Alignment
- Newell Hwy Upgrade
- Road Crossings
- Culverts
- Existing Bridges
- Property Boundaries
- Velocity <= 1m/s
- Percentage Change In Velocity:
- <= -20%
- -20 - 20%
- > 20%

For Information Only

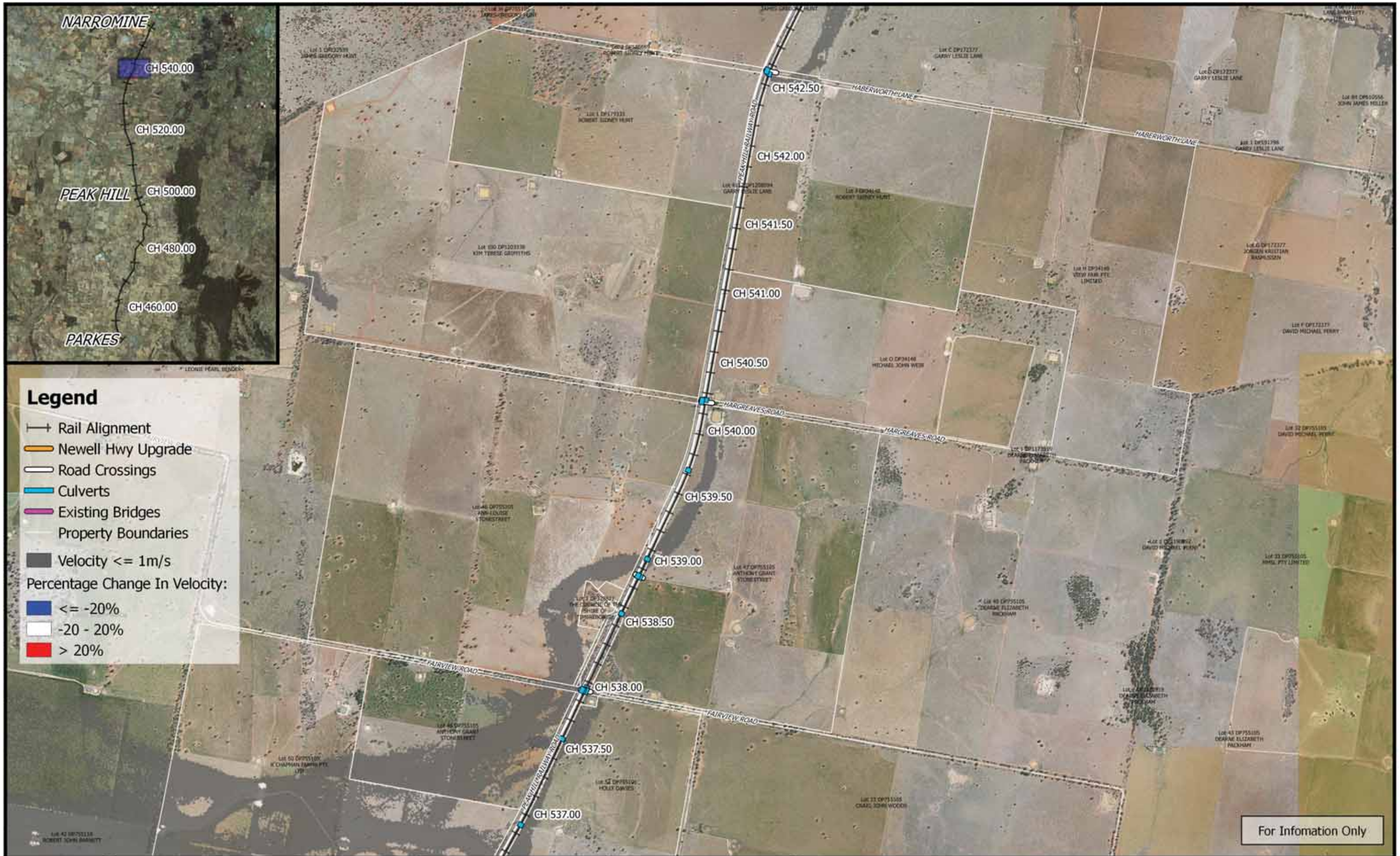
	<p>1:25,000</p>		Date: 25/3/2019	<p><b>Inland Rail - Parkes to Narromine</b> IFC - Cross Drainage Flood Impact Assessment Results</p> <p><b>Figure DE18VC21</b> <i>18% AEP Percentage Change In Velocity - CH 533.00</i></p>	
	Coordinate system: GDA 1994 MGA Zone 55 Inset Aerial Source: NSW Six Map Scale ratio correct when printed at A3		Rev: B - For Information Only		
			Prepared By: YeohM		







	<p>0 250 500 750 1000 m</p> <p>1:25,000</p> <p>Coordinate system: GDA 1994 MGA Zone 55 Inset Aerial Source: NSW Six Map Scale ratio correct when printed at A3</p>		Date: 25/3/2019	<p><b>Inland Rail - Parkes to Narromine</b> IFC - Cross Drainage Flood Impact Assessment Results</p> <p><b>Figure DE18VC22</b> 18% AEP Percentage Change In Velocity - CH 535.00</p>
			Rev: B - For Information Only	
			Prepared By: YeohM	

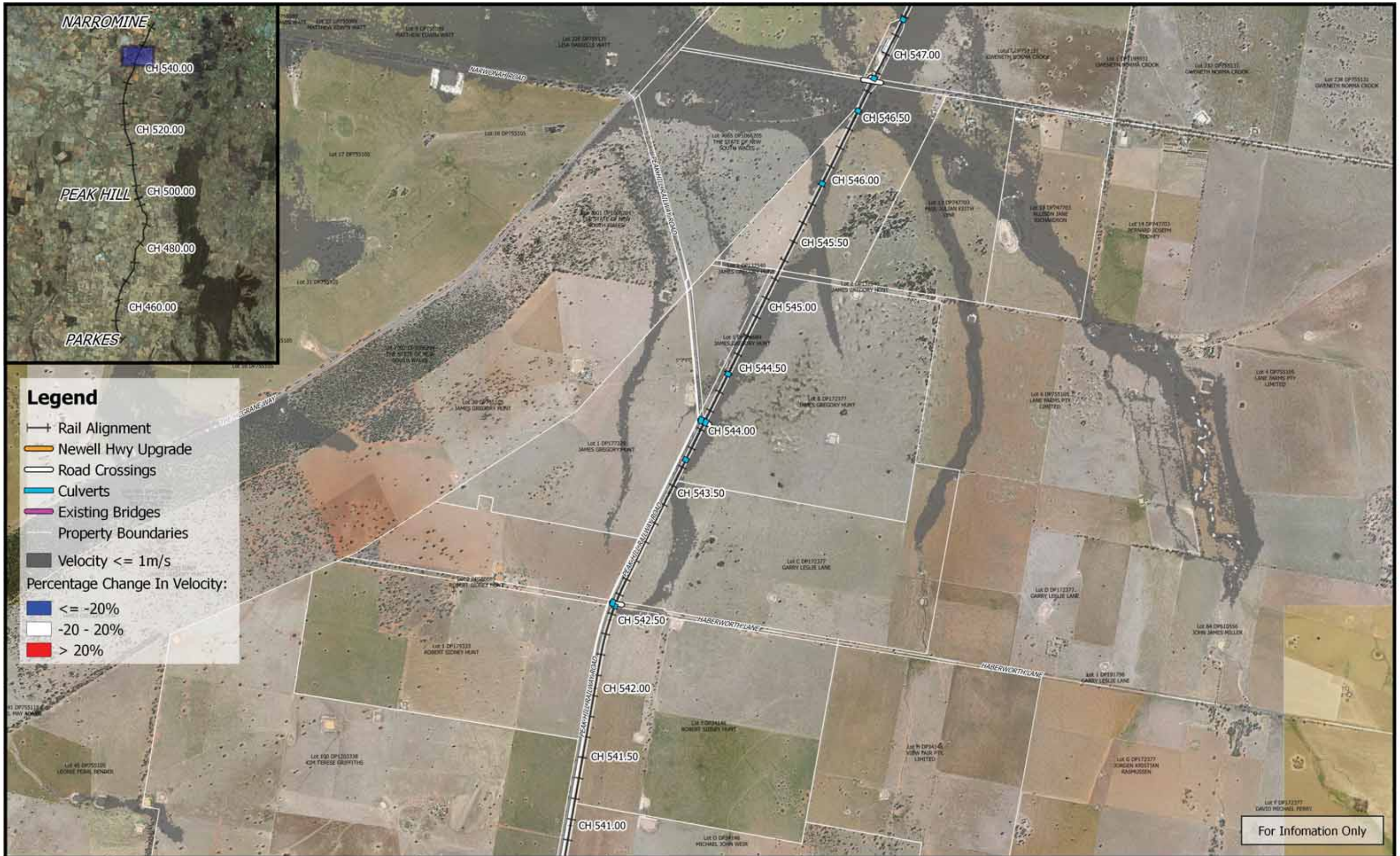




For Information Only

	0 250 500 750 1000 m 1:25,000		Date: 25/3/2019	<b>Inland Rail - Parkes to Narromine</b> IFC - Cross Drainage Flood Impact Assessment Results <b>Figure DE18VC23</b> 18% AEP Percentage Change In Velocity - CH 540.00
	Coordinate system: GDA 1994 MGA Zone 55 Inset Aerial Source: NSW Six Map Scale ratio correct when printed at A3		Rev: B - For Information Only	
	Prepared By: YeohM			





**Legend**

- +— Rail Alignment
- Newell Hwy Upgrade
- Road Crossings
- Culverts
- Existing Bridges
- Property Boundaries
- Velocity <= 1m/s

Percentage Change In Velocity:

- <= -20%
- -20 - 20%
- > 20%

For Information Only

	<p>0 250 500 750 1000 m</p> <p>1:25,000</p> <p>Coordinate system: GDA 1994 MGA Zone 55 Inset Aerial Source: NSW Six Map Scale ratio correct when printed at A3</p>		<p>Date: 25/3/2019</p> <p>Rev: B - For Information Only</p> <p>Prepared By: YeohM</p>	<p><b>Inland Rail - Parkes to Narromine</b> IFC - Cross Drainage Flood Impact Assessment Results</p> <p><b>Figure DE18VC24</b> <i>18% AEP Percentage Change In Velocity - CH 545.00</i></p>
--	--	--	---	---





**Legend**

- +— Rail Alignment
- Newell Hwy Upgrade
- Road Crossings
- Culverts
- Existing Bridges
- Property Boundaries
- Velocity  $\leq 1\text{m/s}$

Percentage Change In Velocity:

- Blue:  $\leq -20\%$
- White:  $-20 - 20\%$
- Red:  $> 20\%$

	<p>1:25,000</p>		Date: 25/3/2019	<p style="text-align: center;"><b>Inland Rail - Parkes to Narromine</b> IFC - Cross Drainage Flood Impact Assessment Results</p> <p style="text-align: center;"><b>Figure DE18VC25</b> 18% AEP Percentage Change In Velocity - CH 550.00</p>	
	Coordinate system: GDA 1994 MGA Zone 55 Inset Aerial Source: NSW Six Map Scale ratio correct when printed at A3		Rev: B - For Information Only		
			Prepared By: YeohM		