

Appendix B

Design Conditions Flood Maps

B01 – Flood Level Change (Afflux) 18% AEP

B02 – Flood Level Change (Afflux) 5% AEP

B03 – Flood Level Change (Afflux) 2% AEP

B04 – Flood Level Change (Afflux) 0.05% AEP

B05 – Flood Velocity Change 18% AEP

B06 – Flood Velocity Change 5% AEP

B07 – Flood Velocity Change 2% AEP

B08 – Flood Velocity Change 0.05% AEP

B09 – Flood Duration Change 18% AEP

B10 – Flood Duration Change 5% AEP


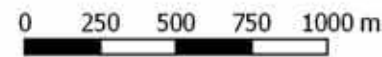

B11 – Flood Duration Change 2% AEP

B12 – Flood Duration Change 0.05% AEP



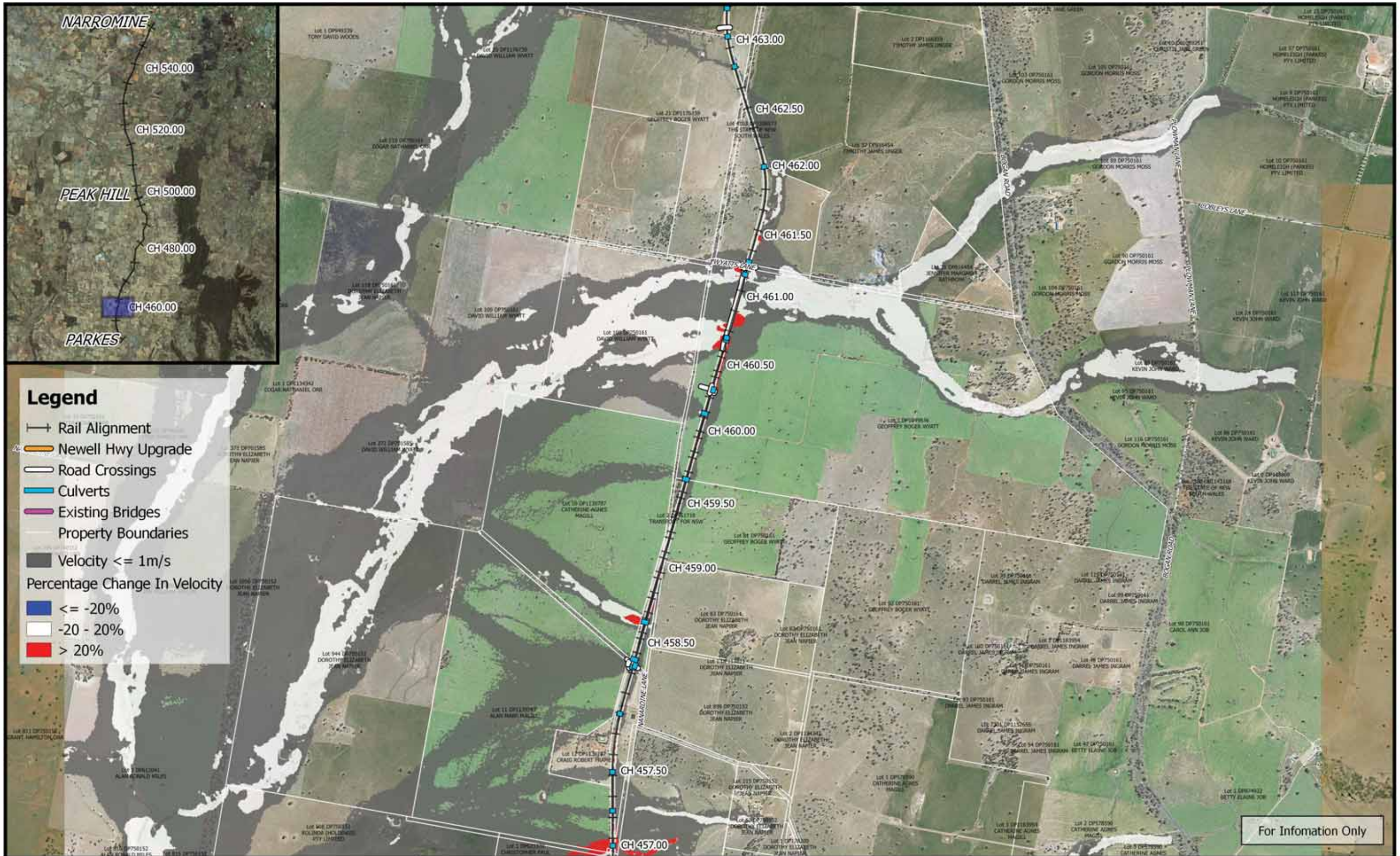


For Information Only

	 1:25,000		Date: 26/3/2019	Inland Rail - Parkes to Narromine IFC - Cross Drainage Flood Impact Assessment Results Figure DE0.05VC1 <i>0.05% AEP Percentage Change In Velocity - CH 450.00</i>
	Coordinate system: GDA 1994 MGA Zone 55 Inset Aerial Source: NSW Six Map Scale ratio correct when printed at A3		Rev: B - For Information Only	
	Prepared By: YeohM			



	0 250 500 750 1000 m 1:25,000 Coordinate system: GDA 1994 MGA Zone 55 Inset Aerial Source: NSW Six Map Scale ratio correct when printed at A3		Date: 26/3/2019	Inland Rail - Parkes to Narromine IFC - Cross Drainage Flood Impact Assessment Results Figure DE0.05VC2 0.05% AEP Percentage Change In Velocity - CH 455.00
	Rev: B - For Information Only			
	Prepared By: YeohM			

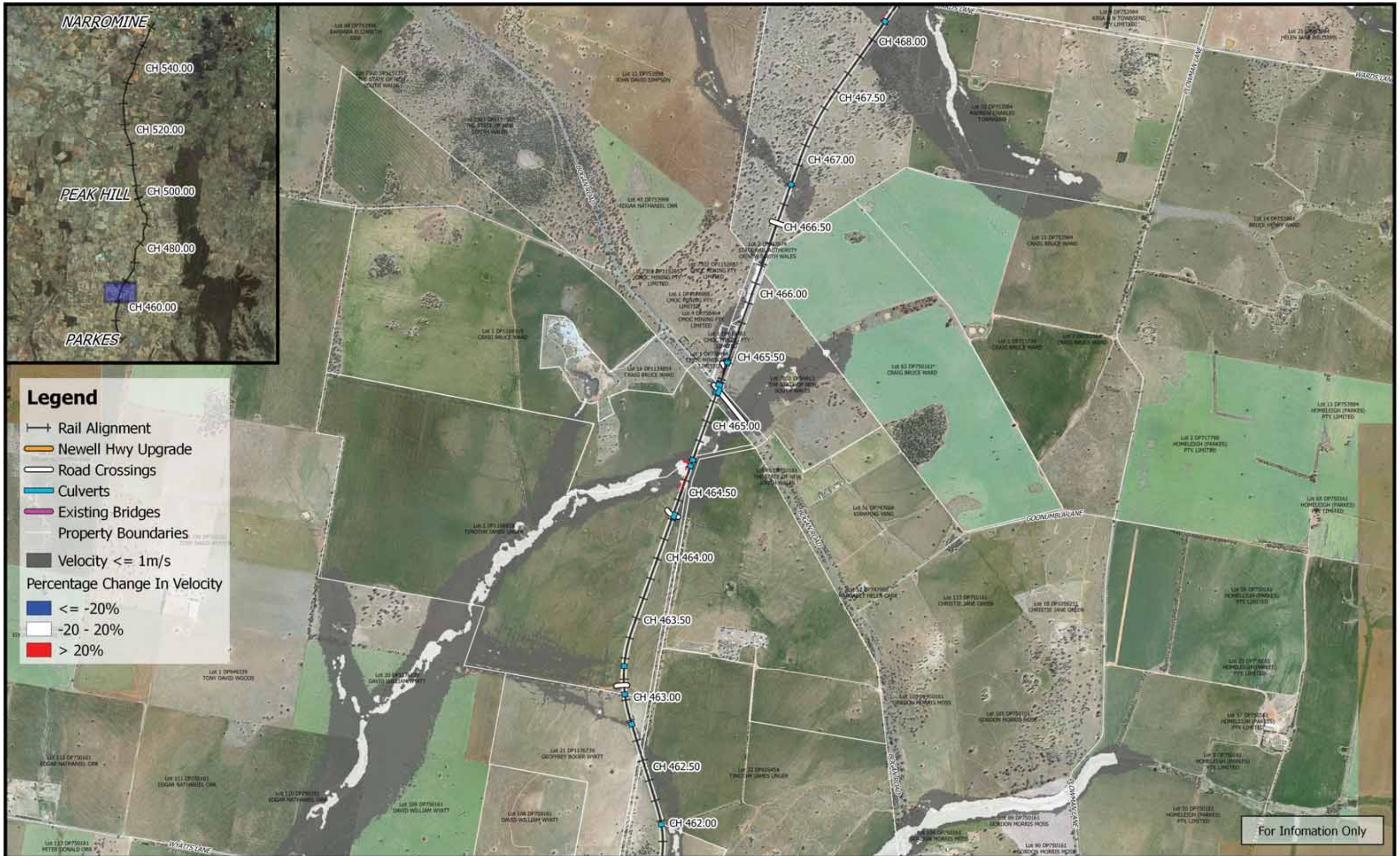


Legend


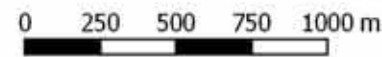


- Rail Alignment
- Newell Hwy Upgrade
- Road Crossings
- Culverts
- Existing Bridges
- Property Boundaries
- Velocity <= 1m/s
- Percentage Change In Velocity
 - Blue: <= -20%
 - White: -20 - 20%
 - Red: > 20%

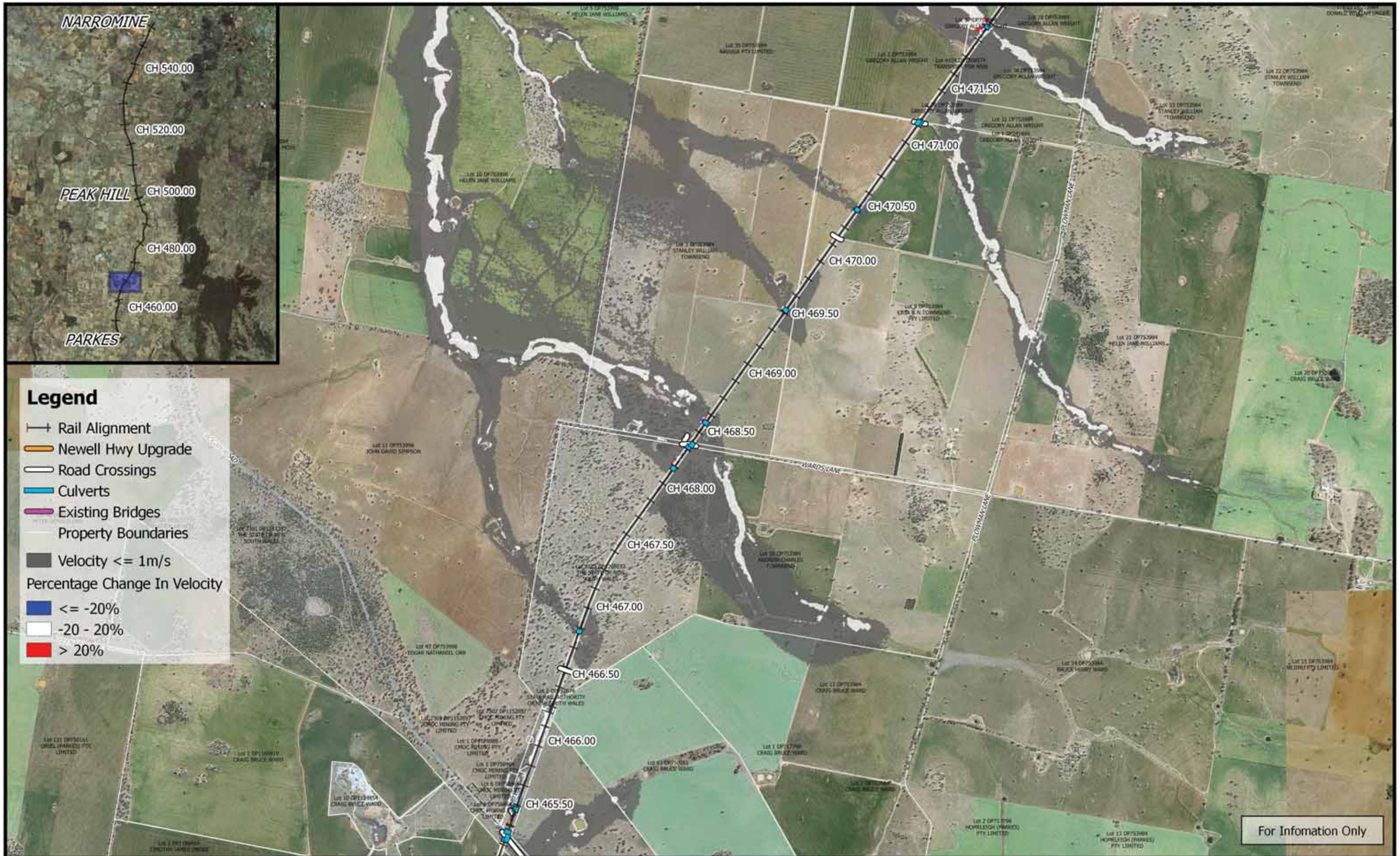
For Information Only

	<p>0 250 500 750 1000 m</p> <p>1:25,000</p> <p>Coordinate system: GDA 1994 MGA Zone 55 Inset Aerial Source: NSW Six Map Scale ratio correct when printed at A3</p>		Date: 26/3/2019	<p>Inland Rail - Parkes to Narromine IFC - Cross Drainage Flood Impact Assessment Results</p> <p>Figure DE0.05VC3 0.05% AEP Percentage Change In Velocity - CH 460.00</p>
			Rev: B - For Information Only	
			Prepared By: YeohM	



For Information Only

	 1:25,000 Coordinate system: GDA 1994 MGA Zone 55 Inset Aerial Source: NSW Six Map Scale ratio correct when printed at A3	 	Date: 26/3/2019 Rev: B - For Information Only Prepared By: YeohM	<p align="center">Inland Rail - Parkes to Narromine IFC - Cross Drainage Flood Impact Assessment Results</p> <p align="center">Figure DE0.05VC4 0.05% AEP Percentage Change In Velocity - CH 465.00</p>
---	--	--	--	---



Legend


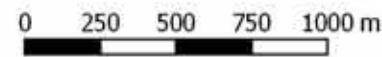

- Rail Alignment
- Newell Hwy Upgrade
- Road Crossings
- Culverts
- Existing Bridges
- Property Boundaries
- Velocity $\le 1\text{m/s}$
- Percentage Change In Velocity**
- $\le -20\%$
- $-20 - 20\%$
- $> 20\%$

For Information Only



	 1:25,000	 MOTT MACDONALD	Date: 26/3/2019	Inland Rail - Parkes to Narromine IFC - Cross Drainage Flood Impact Assessment Results Figure DE0.05VC5 <i>0.05% AEP Percentage Change In Velocity - CH 470.00</i>	
	Coordinate system: GDA 1994 MGA Zone 55 Inset Aerial Source: NSW Six Map Scale ratio correct when printed at A3		Rev: B - For Information Only		
			Prepared By: YeohM		



For Information Only

	 1:25,000		Date: 26/3/2019	Inland Rail - Parkes to Narromine IFC - Cross Drainage Flood Impact Assessment Results Figure DE0.05VC6 <i>0.05% AEP Percentage Change In Velocity - CH 472.00</i>
	Coordinate system: GDA 1994 MGA Zone 55 Inset Aerial Source: NSW Six Map Scale ratio correct when printed at A3		Rev: B - For Information Only	
	Prepared By: YeohM			



	0 250 500 750 1000 m 1:25,000		Date: 26/3/2019	Inland Rail - Parkes to Narromine IFC - Cross Drainage Flood Impact Assessment Results Figure DE0.05VC7 <i>0.05% AEP Percentage Change In Velocity - CH 475.00</i>
	Coordinate system: GDA 1994 MGA Zone 55 Inset Aerial Source: NSW Six Map Scale ratio correct when printed at A3		Rev: B - For Information Only	
	Prepared By: YeohM			

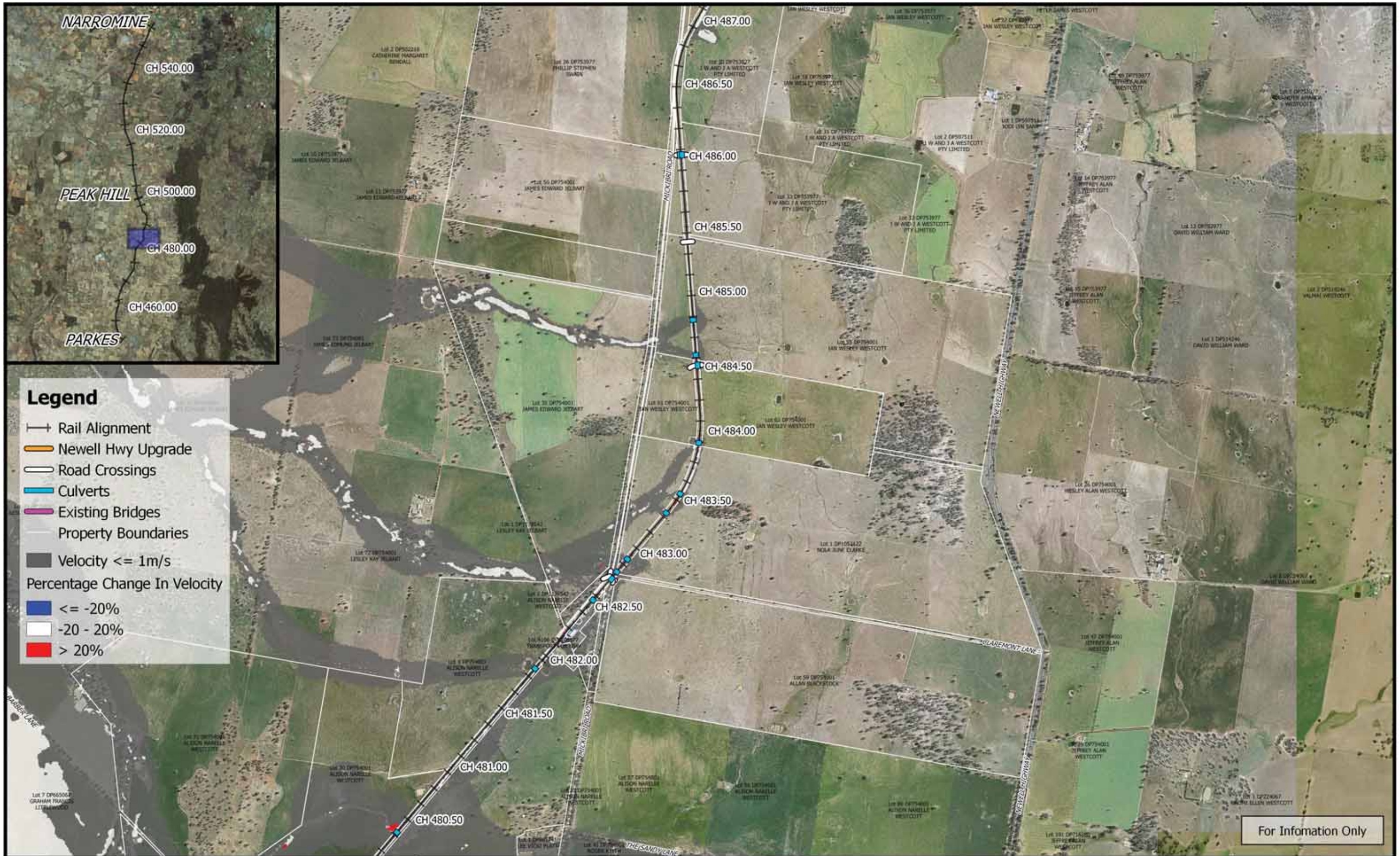


Legend



- Rail Alignment
- Newell Hwy Upgrade
- Road Crossings
- Culverts
- Existing Bridges
- Property Boundaries
- Velocity $\le 1\text{m/s}$
- Percentage Change In Velocity**
- $\le -20\%$
- $-20 - 20\%$
- $> 20\%$

For Information Only

	<p>0 250 500 750 1000 m</p> <p>1:25,000</p> <p>Coordinate system: GDA 1994 MGA Zone 55 Inset Aerial Source: NSW Six Map Scale ratio correct when printed at A3</p>		Date: 26/3/2019	<p align="center">Inland Rail - Parkes to Narromine IFC - Cross Drainage Flood Impact Assessment Results</p> <p align="right">Figure DE0.05VC8 <i>0.05% AEP Percentage Change In Velocity - CH 480.00</i></p>
			Rev: B - For Information Only	
			Prepared By: YeohM	



For Information Only

	<p>0 250 500 750 1000 m</p> <p>1:25,000</p> <p>Coordinate system: GDA 1994 MGA Zone 55 Inset Aerial Source: NSW Six Map Scale ratio correct when printed at A3</p>		Date: 26/3/2019	<p>Inland Rail - Parkes to Narromine IFC - Cross Drainage Flood Impact Assessment Results</p> <p>Figure DE0.05VC9 0.05% AEP Percentage Change In Velocity - CH 485.00</p>
			Rev: B - For Information Only	
			Prepared By: YeohM	



Legend

- Rail Alignment
- Newell Hwy Upgrade
- Road Crossings
- Culverts
- Existing Bridges
- Property Boundaries
- Velocity $\leq 1\text{m/s}$
- Percentage Change In Velocity**
- $\leq -20\%$
- $-20 - 20\%$
- $> 20\%$

For Information Only


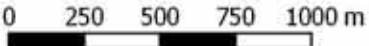

	<p>1:25,000</p>		Date: 26/3/2019	<p>Inland Rail - Parkes to Narromine IFC - Cross Drainage Flood Impact Assessment Results</p> <p>Figure DE0.05VC10 <i>0.05% AEP Percentage Change In Velocity - CH 490.00</i></p>
	Coordinate system: GDA 1994 MGA Zone 55 Inset Aerial Source: NSW Six Map Scale ratio correct when printed at A3		Rev: B - For Information Only	




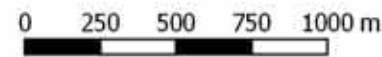

Legend

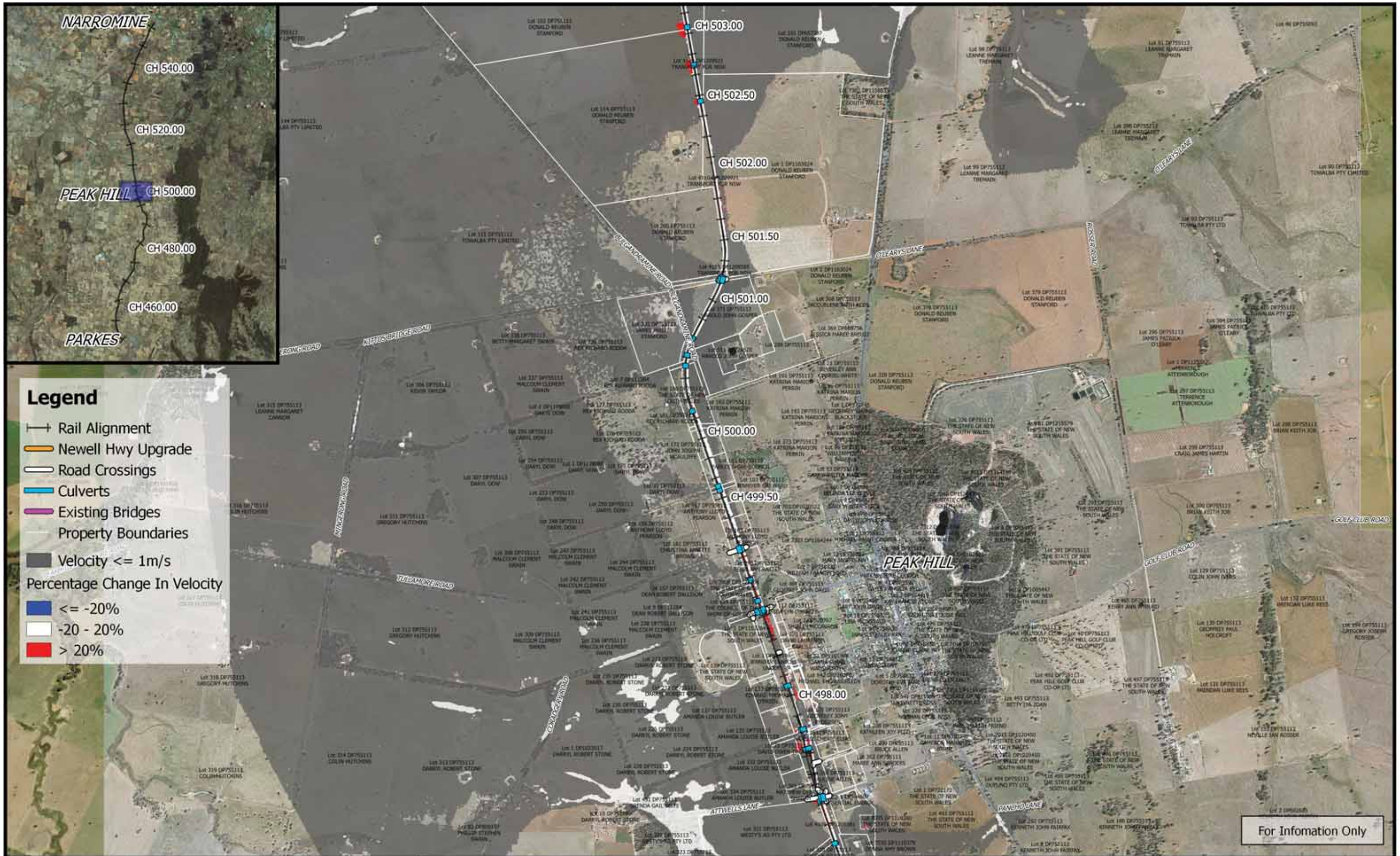
- +— Rail Alignment
- Newell Hwy Upgrade
- Road Crossings
- Culverts
- Existing Bridges
- Property Boundaries
- Velocity <= 1m/s
- Percentage Change In Velocity
- <= -20%
- -20 - 20%
- > 20%

For Information Only

	 1:25,000		Date: 26/3/2019	Inland Rail - Parkes to Narromine IFC - Cross Drainage Flood Impact Assessment Results Figure DE0.05VC11 <i>0.05% AEP Percentage Change In Velocity - CH 492.00</i>
	Coordinate system: GDA 1994 MGA Zone 55 Inset Aerial Source: NSW Six Map Scale ratio correct when printed at A3		Rev: B - For Information Only	
	Prepared By: YeohM			



	 1:25,000 Coordinate system: GDA 1994 MGA Zone 55 Inset Aerial Source: NSW Six Map Scale ratio correct when printed at A3		Date: 26/3/2019 Rev: B - For Information Only Prepared By: YeohM	<p align="center">Inland Rail - Parkes to Narromine IFC - Cross Drainage Flood Impact Assessment Results</p> <p align="right">Figure DE0.05VC12 <i>0.05% AEP Percentage Change In Velocity - CH 495.00</i></p>
---	--	--	--	--

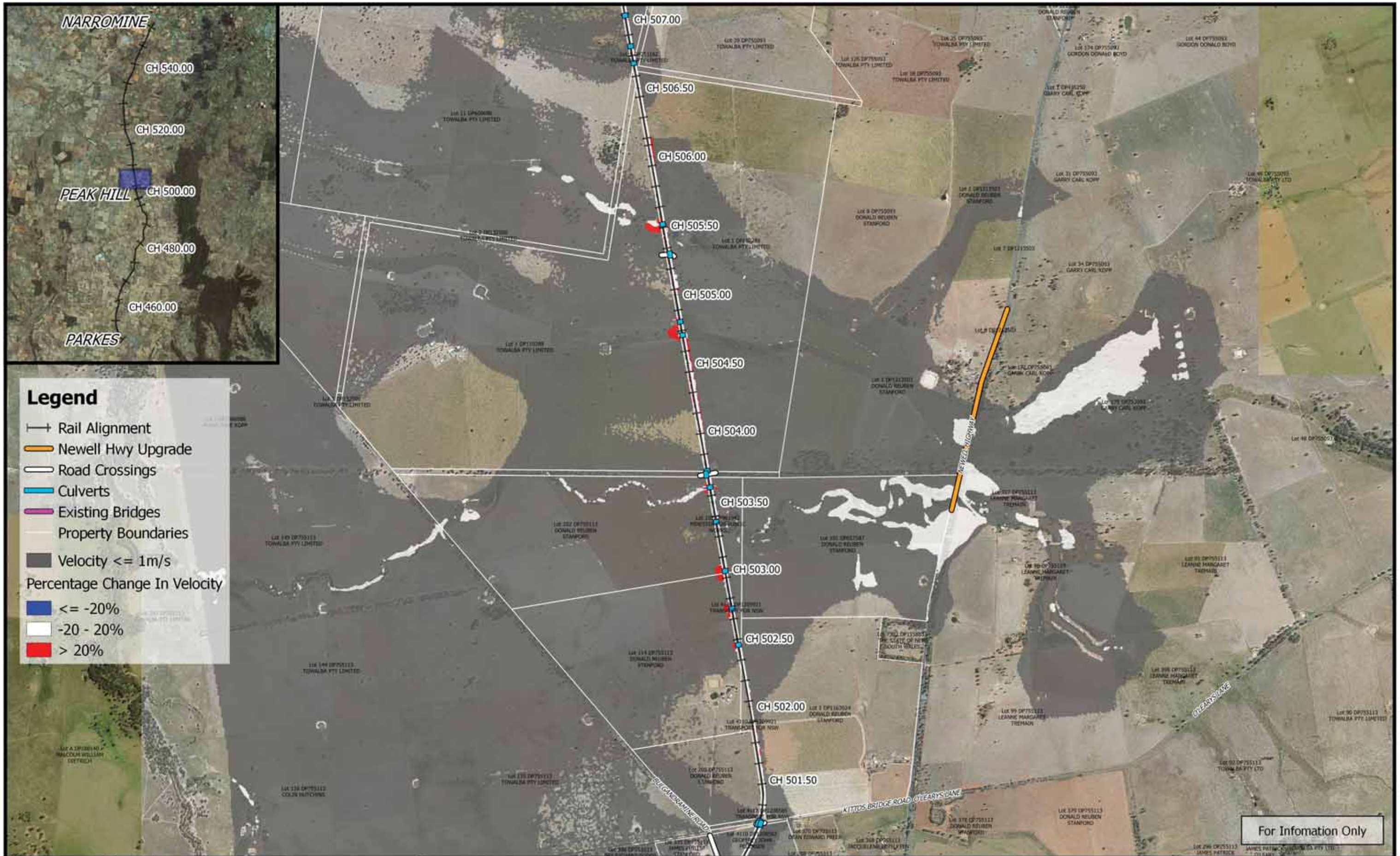


Legend

- Rail Alignment
- Newell Hwy Upgrade
- Road Crossings
- Culverts
- Existing Bridges
- Property Boundaries
- Velocity <= 1m/s
- Percentage Change In Velocity**
- <= -20%
- 20 - 20%
- > 20%

For Information Only

	<p>1:25,000</p>		Date: 26/3/2019	<p style="text-align: center;">Inland Rail - Parkes to Narromine IFC - Cross Drainage Flood Impact Assessment Results</p> <p style="text-align: center;">Figure DE0.05VC13 0.05% AEP Percentage Change In Velocity - CH 500.00</p>
	Coordinate system: GDA 1994 MGA Zone 55 Inset Aerial Source: NSW Six Map Scale ratio correct when printed at A3		Rev: B - For Information Only	

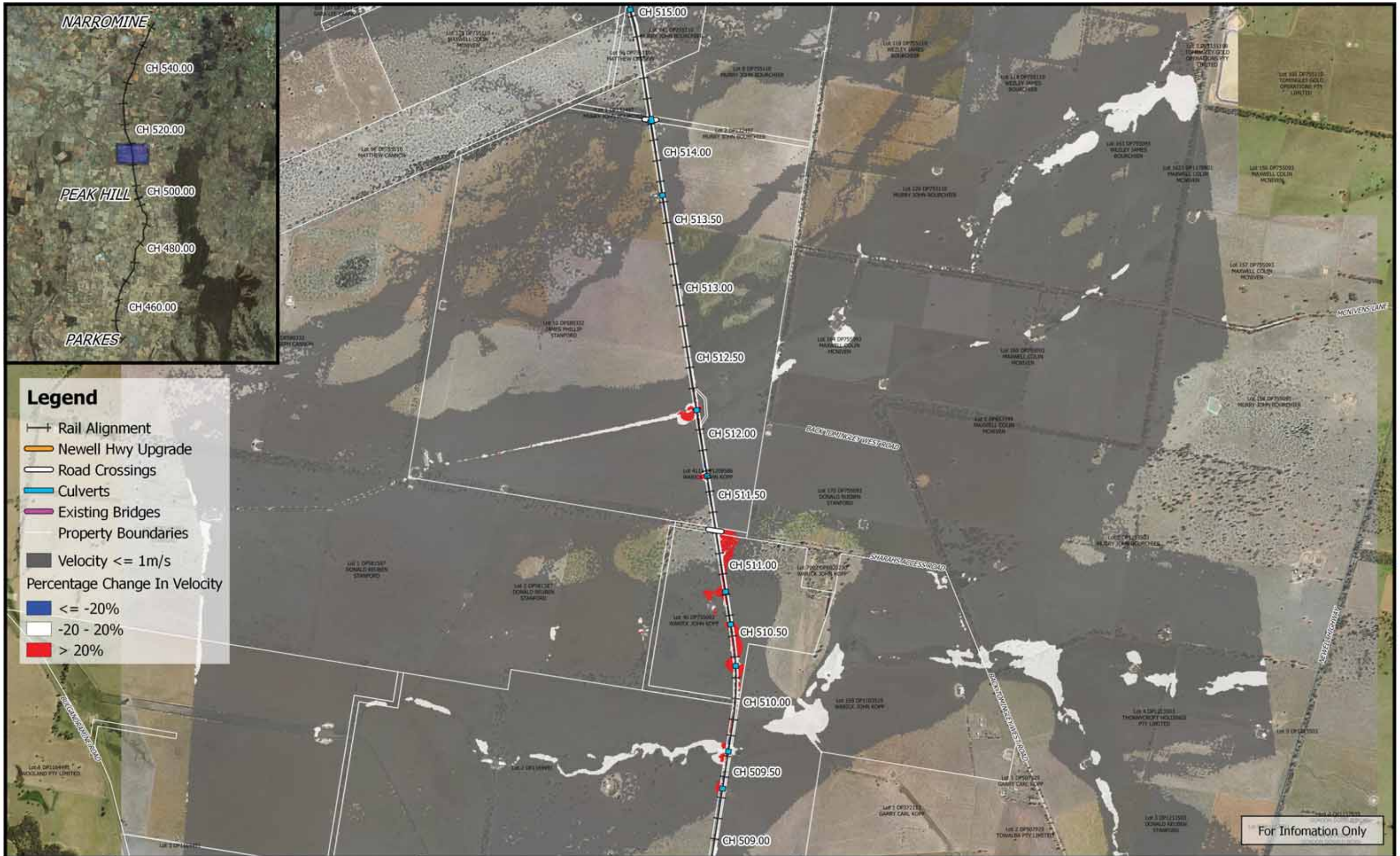


	<p>0 250 500 750 1000 m</p> <p>1:25,000</p> <p>Coordinate system: GDA 1994 MGA Zone 55 Inset Aerial Source: NSW Six Map Scale ratio correct when printed at A3</p>		Date: 26/3/2019	<p>Inland Rail - Parkes to Narromine IFC - Cross Drainage Flood Impact Assessment Results</p> <p>Figure DE0.05VC14 0.05% AEP Percentage Change In Velocity - CH 505.00</p>
			Rev: B - For Information Only	
			Prepared By: YeohM	



For Information Only

	<p>0 250 500 750 1000 m</p> <p>1:25,000</p> <p>Coordinate system: GDA 1994 MGA Zone 55 Inset Aerial Source: NSW Six Map Scale ratio correct when printed at A3</p>		Date: 26/3/2019	<p>Inland Rail - Parkes to Narromine IFC - Cross Drainage Flood Impact Assessment Results</p> <p>Figure DE0.05VC15 0.05% AEP Percentage Change In Velocity - CH 510.00</p>
			Rev: B - For Information Only	
			Prepared By: YeohM	



Legend

- Rail Alignment
- Newell Hwy Upgrade
- Road Crossings
- Culverts
- Existing Bridges
- Property Boundaries
- Velocity $\leq 1\text{m/s}$
- Percentage Change In Velocity**
- $\leq -20\%$
- $-20 - 20\%$
- $> 20\%$

For Information Only

	<p>1:25,000</p>		Date: 26/3/2019	<p>Inland Rail - Parkes to Narromine IFC - Cross Drainage Flood Impact Assessment Results</p> <p>Figure DE0.05VC16 0.05% AEP Percentage Change In Velocity - CH 512.00</p>
	Coordinate system: GDA 1994 MGA Zone 55 Inset Aerial Source: NSW Six Map Scale ratio correct when printed at A3		Rev: B - For Information Only	
	Prepared By: YeohM			



Legend

- Rail Alignment
- Newell Hwy Upgrade
- Road Crossings
- Culverts
- Existing Bridges
- Property Boundaries
- Velocity $\le 1\text{m/s}$
- Percentage Change In Velocity**
- $\le -20\%$
- $-20 - 20\%$
- $> 20\%$

For Information Only

	<p>1:25,000</p>		Date: 26/3/2019	<p>Inland Rail - Parkes to Narromine IFC - Cross Drainage Flood Impact Assessment Results</p> <p>Figure DE0.05VC17 0.05% AEP Percentage Change In Velocity - CH 515.00</p>	
	Coordinate system: GDA 1994 MGA Zone 55 Inset Aerial Source: NSW Six Map Scale ratio correct when printed at A3		Rev: B - For Information Only		
			Prepared By: YeohM		

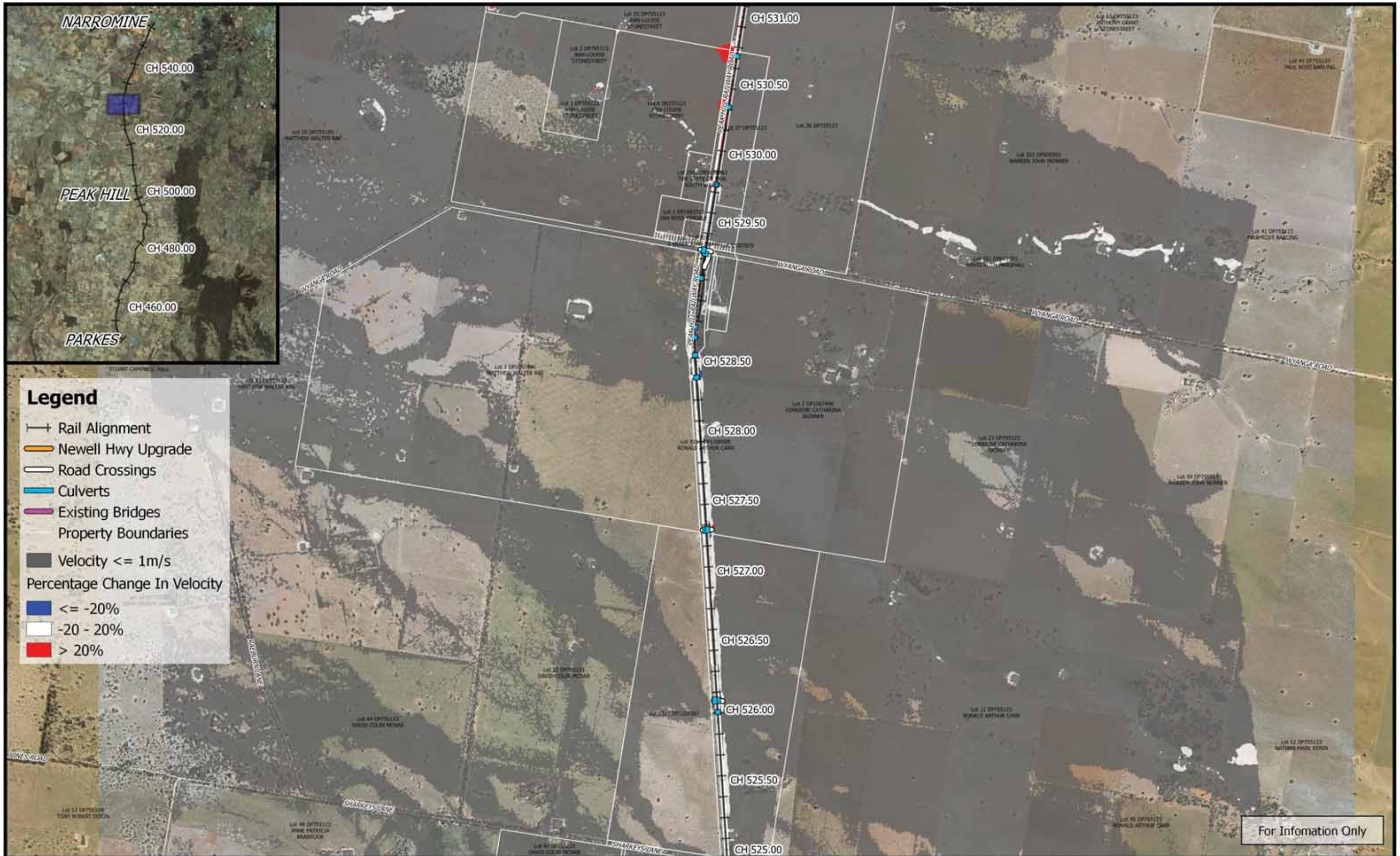



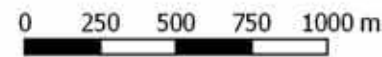


Legend

- Rail Alignment
- Newell Hwy Upgrade
- Road Crossings
- Culverts
- Existing Bridges
- Property Boundaries
- Velocity $\leq 1\text{m/s}$
- Percentage Change In Velocity
 - $\leq -20\%$
 - $-20 - 20\%$
 - $> 20\%$

For Information Only

	<p>0 250 500 750 1000 m</p> <p>1:25,000</p> <p>Coordinate system: GDA 1994 MGA Zone 55 Inset Aerial Source: NSW Six Map Scale ratio correct when printed at A3</p>		Date: 26/3/2019	<p>Inland Rail - Parkes to Narromine IFC - Cross Drainage Flood Impact Assessment Results</p> <p>Figure DE0.05VC18 <i>0.05% AEP Percentage Change In Velocity - CH 520.00</i></p>
	Rev: B - For Information Only		Prepared By: YeohM	




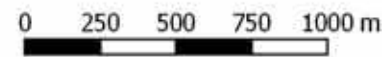

	 1:25,000	 	Date: 26/3/2019	Inland Rail - Parkes to Narromine IFC - Cross Drainage Flood Impact Assessment Results Figure DE0.05VC20 <i>0.05% AEP Percentage Change In Velocity - CH 530.00</i>
	Coordinate system: GDA 1994 MGA Zone 55 Inset Aerial Source: NSW Six Map Scale ratio correct when printed at A3		Rev: B - For Information Only	
	Prepared By: YeohM			

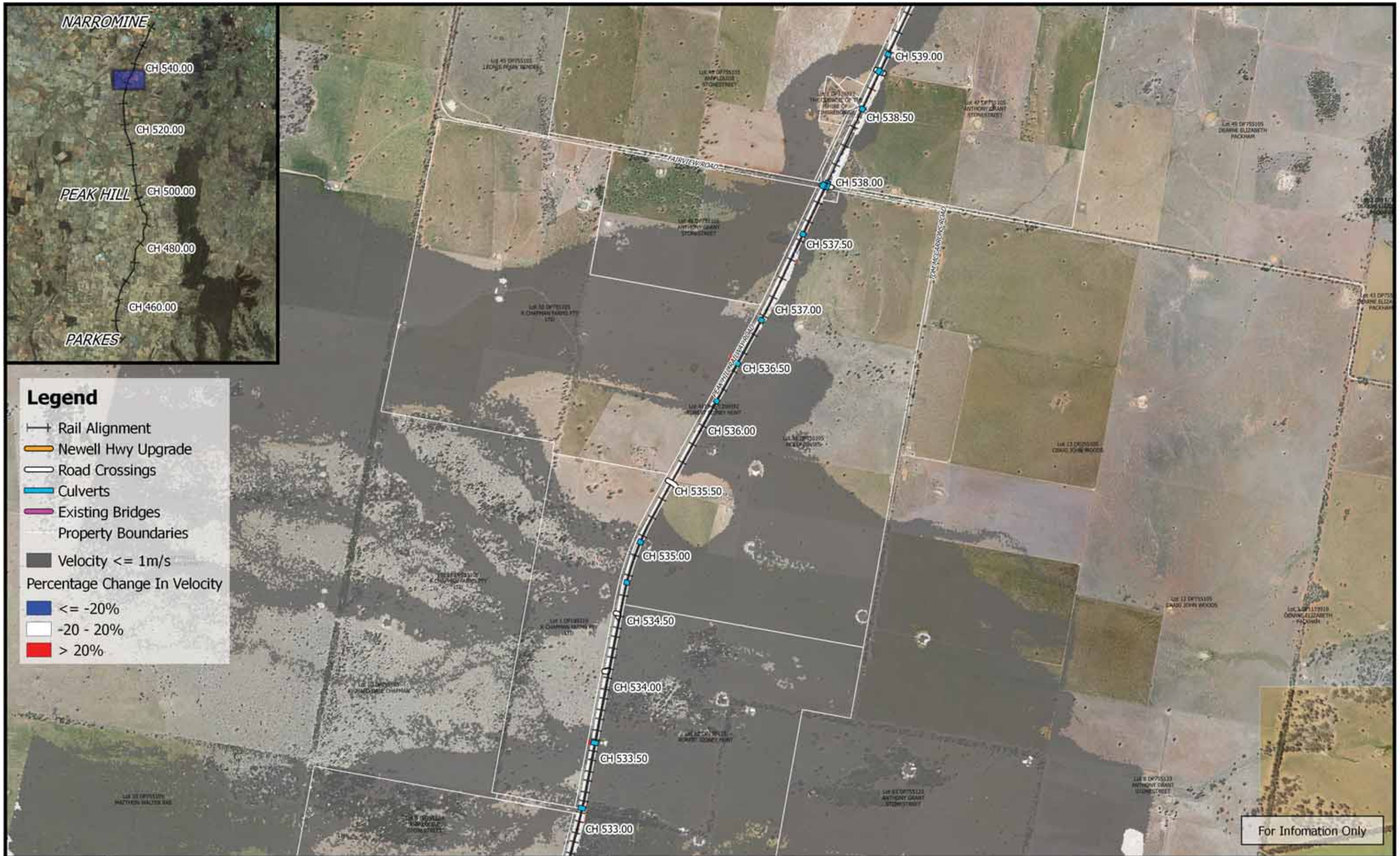


Legend

- +— Rail Alignment
- Newell Hwy Upgrade
- Road Crossings
- Culverts
- Existing Bridges
- Property Boundaries
- Velocity $\leq 1\text{m/s}$
- Percentage Change In Velocity
- $\leq -20\%$
- $-20 - 20\%$
- $> 20\%$

For Information Only

	 1:25,000		Date: 26/3/2019	Inland Rail - Parkes to Narromine IFC - Cross Drainage Flood Impact Assessment Results Figure DE0.05VC21 <i>0.05% AEP Percentage Change In Velocity - CH 533.00</i>
	Coordinate system: GDA 1994 MGA Zone 55 Inset Aerial Source: NSW Six Map Scale ratio correct when printed at A3		Rev: B - For Information Only	
	Prepared By: YeohM			



Legend

- +— Rail Alignment
- Newell Hwy Upgrade
- Road Crossings
- Culverts
- Existing Bridges
- Property Boundaries
- Velocity <= 1m/s
- Percentage Change In Velocity
- <= -20%
- -20 - 20%
- > 20%

For Information Only


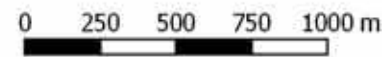

	<p>1:25,000</p>		Date: 26/3/2019	<p>Inland Rail - Parkes to Narromine IFC - Cross Drainage Flood Impact Assessment Results</p> <p>Figure DE0.05VC22 <i>0.05% AEP Percentage Change In Velocity - CH 535.00</i></p>	
	Coordinate system: GDA 1994 MGA Zone 55 Inset Aerial Source: NSW Six Map Scale ratio correct when printed at A3		Rev: B - For Information Only		
			Prepared By: YeohM		

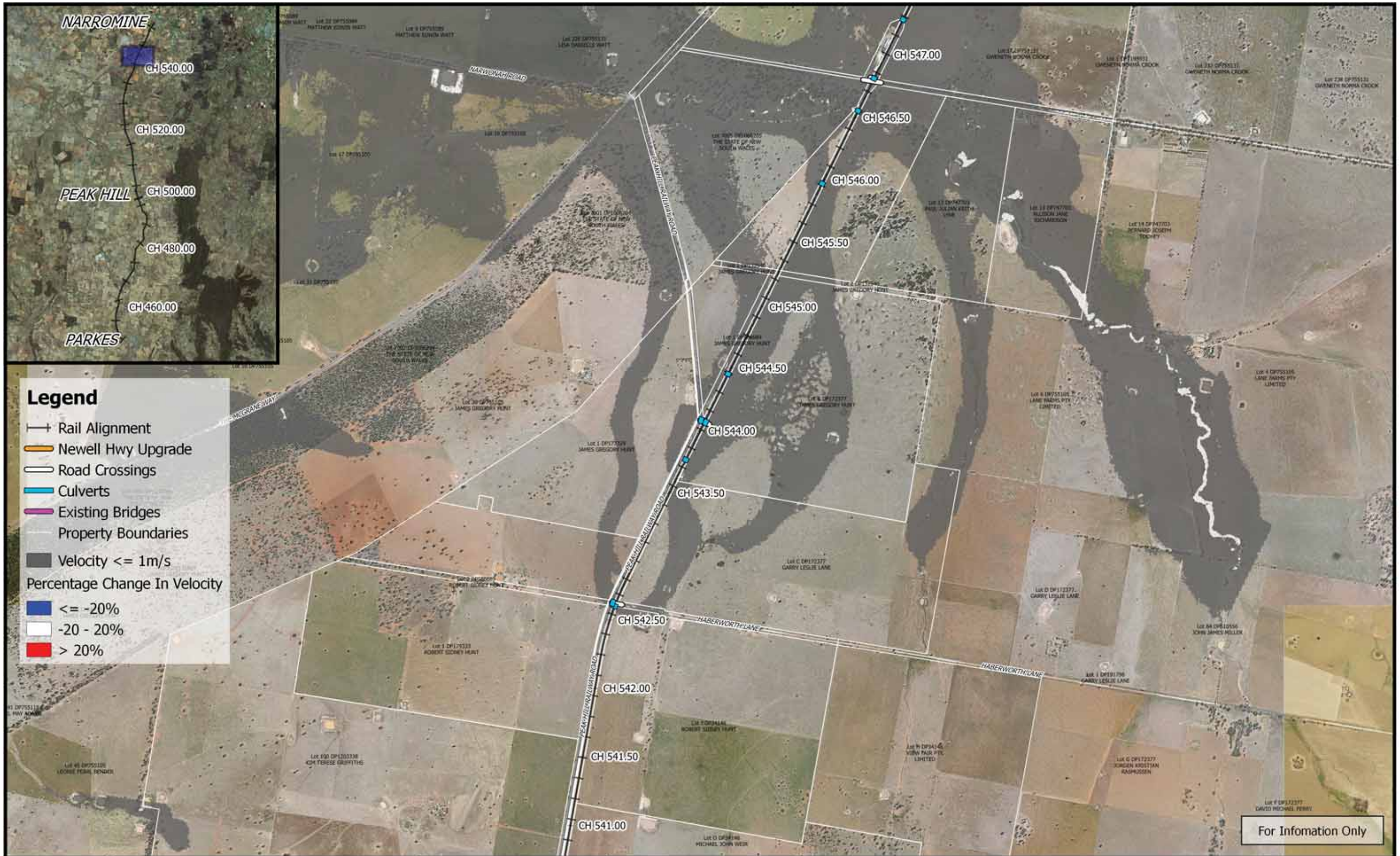


Legend


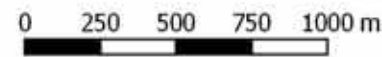

- +— Rail Alignment
- Newell Hwy Upgrade
- Road Crossings
- Culverts
- Existing Bridges
- Property Boundaries
- Velocity $\leq 1\text{m/s}$
- Percentage Change In Velocity
- $\leq -20\%$
- $-20 - 20\%$
- $> 20\%$

For Information Only

	 1:25,000		Date: 26/3/2019	Inland Rail - Parkes to Narromine IFC - Cross Drainage Flood Impact Assessment Results Figure DE0.05VC23 <i>0.05% AEP Percentage Change In Velocity - CH 540.00</i>
	Coordinate system: GDA 1994 MGA Zone 55 Inset Aerial Source: NSW Six Map Scale ratio correct when printed at A3		Rev: B - For Information Only	
	Prepared By: YeohM			



For Information Only

	 1:25,000		Date: 26/3/2019	Inland Rail - Parkes to Narromine IFC - Cross Drainage Flood Impact Assessment Results Figure DE0.05VC24 <i>0.05% AEP Percentage Change In Velocity - CH 545.00</i>	
	Coordinate system: GDA 1994 MGA Zone 55 Inset Aerial Source: NSW Six Map Scale ratio correct when printed at A3		Rev: B - For Information Only		
			Prepared By: YeohM		

E:\2205\mgt\12\DR_P2N_1101\WIP\Flooding and Drainage\GIS Mapping\Individual Property Maps\Maping_Full_Project.rgs - 2.18.18



For Information Only

	<p>0 250 500 750 1000 m</p> <p>1:25,000</p> <p>Coordinate system: GDA 1994 MGA Zone 55 Inset Aerial Source: NSW Six Map Scale ratio correct when printed at A3</p>		Date: 26/3/2019	<p>Inland Rail - Parkes to Narromine IFC - Cross Drainage Flood Impact Assessment Results</p> <p>Figure DE0.05VC25 0.05% AEP Percentage Change In Velocity - CH 550.00</p>
			Rev: B - For Information Only	
			Prepared By: YeohM	