



AGENDA: MEETING 4

NO.	ITEM	TOPIC LEADER
1	Open meeting, welcome	Michelle
2	Actions from last meeting – set aside for this meeting	Michelle
3	Adoption of minutes	Michelle
4	Working group check-in	Todd/ Michelle
5	ARTC scope	Todd
6	Conversations with community	Group
7	Break	All
8	Exploring requirements	Michelle
9	Where to from here <ul style="list-style-type: none">- Agenda for next meeting- Upcoming activities	Michelle
10	Close	Michelle



Inland Rail

Enhancing the North East Rail line to allow for double-stacked freight train clearance

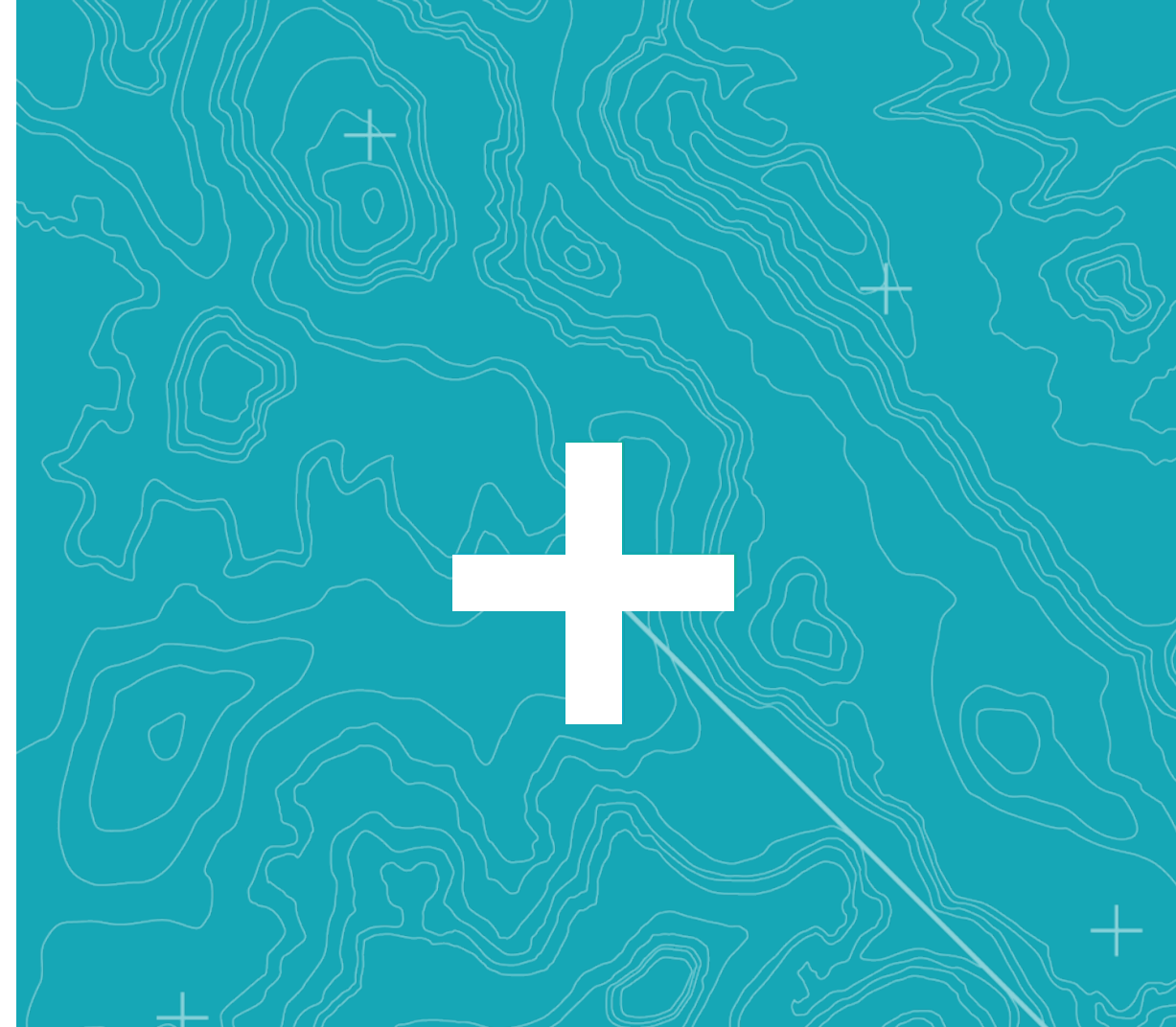
ACTIONS FROM LAST MEETING

NO. ACTIONS

- 1 Further review of bridge replacement options and examples of urban design to address concerns about the earthen embankment
- 2 Consideration of options presents at the meeting, along with any others sent through
- 3 Provide further information about the impact of a bridge solution on Anderson St
- 4 Consider virtual modelling of the existing environment around the station precinct
- 5 Provide peak levels of baseline noise studies
- 6 Provide VicRoads response to Road Under Rail

ADOPTION OF MINUTES

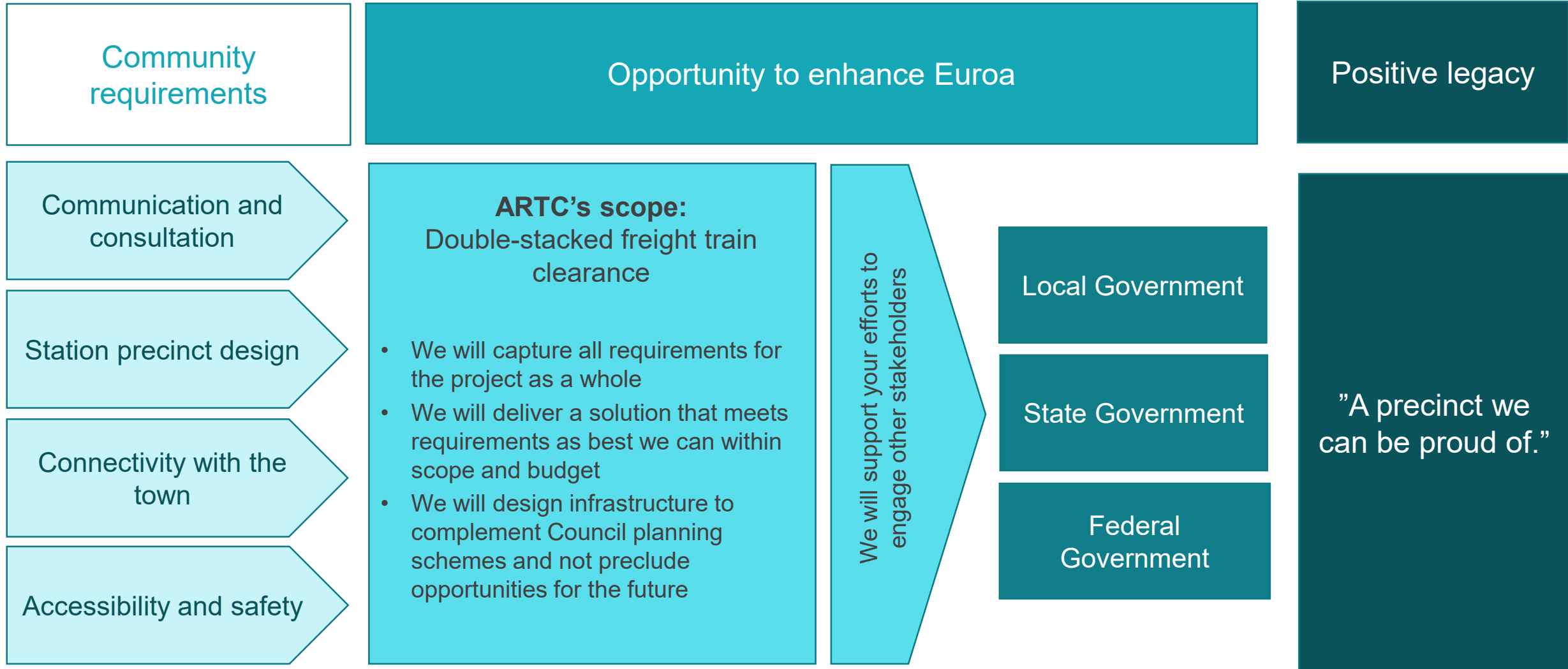
- Will include attendance, apologies, declarations of interest; and a record of topics discussed and assigned actions.
- Be reviewed and approved for circulation to members by ARTC and the Chair.
- **Be circulated to all members for review and to confirm accuracy. Any request for major changes to the minutes must be sent in writing to ARTC and forward to the Chair, to be tabled for agreement at the next Working Group meeting.**
- Be published on the ARTC website once approved. Any confidential information will be redacted from the minutes published on the ARTC website.



How are we going?

- What's working for you?
- What's not working?
- What questions do you have?

PROJECT SCOPE



Update from Friday

- Spoke to more than 50 people over 4 hours
- Focus was to update on the status of the project and get feedback on community requirements
- We heard many of the same concerns raised by the Working Group – with the process and the previous preferred concept
- Overall the feeling was quite positive – people are keen for further information
- Good feedback on the requirements – cover the issues people are concerns about
- There appeared to be broad support for a bridge replacement option – want to have the opportunity to provide further input into the design
- Clear we need to do more work with the broader community

What are you hearing?

- How has the community responded to your conversations around the Working Group?
- What are you hearing?
- What questions are people asking?

EXPLORING COMMUNITY REQUIREMENTS

- At the last meeting we discussed our understanding of community requirements – appeared to be broad support
- We tested the high level requirements with the community at the Community Conversation – giving us greater confidence that we have got them right
- Tonight we want to explore them in more detail

EXPLORING COMMUNITY REQUIREMENTS

Help us understand the requirements from a community perspective

Use the following questions to guide your discussion :

- What is the problem you are looking to solve? What are the issues?
- What do we need to know from a locals perspective?
- What is the outcome your are looking for?

Opportunity to enhance Euroa

The primary requirement from the Euroa community is to make sure the opportunity afforded by this project to improve the station precinct is delivered

1. Communication and consultation
2. Station precinct design
3. Connectivity with town
4. Accessibility and safety

These requirements were based on information collected during the following discussions and research:

- ARTC engagement events
- IPSOS market research
- EWG Meeting #1
- EWG Meeting #2
- Ongoing community feedback

COMMUNICATION AND CONSULTATION

- Rigorous and transparent consultation process
- Clear explanations of the rationale behind all major design decisions, communicated in a transparent and timely manner
- Technical information presented in a way that assumes no prior knowledge, so the entire community can participate in discussions



STATION PRECINCT DESIGN



- Modernise the look of the station whilst also respecting Euroa's heritage
- Incorporate open spaces around the station for community use
- Design should be a new landmark that Euroa can be proud of

ACCESSIBILITY AND SAFETY

- Improve the accessibility and safety of the station and station precinct
- Maintain vehicle access to station
- Proper consideration for requirements of older community members
- Improve pedestrian access, including from the north-west
- Address existing perception of safety issues due to lack of visibility and poor lighting



CONNECTIVITY WITH TOWN



- Design should ensure connectivity between the station precinct and the town centre
- Design should address the perceived divide in the town caused by the existing bridge
- The rail crossing is crucial as a local and regional connection
- Improve existing pedestrian access across tracks
- Connections to and from site should service the needs of its active elderly community, pedestrians, and all modes of transport

FUTURE MEETINGS

1. Topics for discussion
2. Proposed date for next meeting: Monday, October 14 at 6pm



Thank you for your participation