



ARTC

INLAND
RAIL

GLENROWAN

—

PROJECT
REFERENCE
GUIDE

INLAND RAIL IN GLENROWAN

Beaconsfield Parade Bridge in Glenrowan is located along the existing North East Rail corridor in Victoria. This site needs modifications to provide the clearances needed to enable the safe passage of double-stacked freight trains. Taller freight trains need 7.1m in vertical clearance and around 4.5m of horizontal clearance to safely run on the track.

WHAT IS INLAND RAIL?

Inland Rail is a fast freight backbone from Melbourne to Brisbane that will transform how we move goods around Australia, with a direct rail transit time of less than 24 hours between these cities. It will better link businesses, farmers and producers to national and global markets and generate new opportunities for industries and regions.

Tottenham to Albury is one of 13 projects that complete Inland Rail. Spanning 305km of existing rail corridor from metropolitan Melbourne to the Victoria-NSW border at Albury-Wodonga. This project will see modifications to existing structures and increased clearances along the rail corridor to provide sufficient height and width to support the safe running of double-stacked freight trains.

Beaconsfield Parade Bridge, Glenrowan, is one of 12 project sites located along Victoria's North East Rail Line.

WHAT'S PLANNED FOR GLENROWAN?

Options we considered during our early design phase included lowering the track under the existing bridge and replacing the existing bridge to allow suitable clearance. We have also considered options involving relocating the existing bridge at Beaconsfield Parade to a different location in Glenrowan.

These options have been considered by heritage and technical specialists to determine the most appropriate option for Glenrowan, taking into account the significant heritage of the township, traffic movements, pedestrian/cyclist access and connectivity between each side of the rail tracks.

The design we're presenting to the community and other stakeholders involves replacing the existing bridge on Beaconsfield Parade with an open-span bridge.

The open-span bridge is proposed as the most suitable option as it will improve connectivity in the township, open the visual amenity of the iconic Siege Site and best protects the precinct's heritage.

The currently proposed design will consider the following measures to mitigate impacts:

- ▶ incorporate an open design by minimising embankments and retaining walls
- ▶ keeping the space under the bridge as open as possible
- ▶ provision for comfortable pedestrian access across the bridge
- ▶ creating opportunities for the interpretation of the site and the events of June 1880 that led to the significance of the heritage precinct.

To minimise disruption to the Glenrowan community, we propose constructing the replacement bridge alongside the existing bridge to maintain access. We will then decommission and remove the existing road bridge once the new structure is complete. The area will then be landscaped.

The new bridge option is currently undergoing technical and heritage assessments and is considered the best option for protecting the precinct's heritage, including the iconic Ned Kelly siege site.



Beaconsfield Parade Bridge, Glenrowan



HAVE YOUR SAY ON INLAND RAIL IN GLENROWAN

We are seeking submissions on our proposed Planning Scheme Amendment application from **19 April to 17 May, 2021**.

Visit inlandrail.artc.com.au/t2a-status to make a submission and find out more. See back cover for more ways to share your views and ideas.



Ned Kelly "Gate House" plaque, Glenrowan

WHAT HAVE WE HEARD SO FAR?

We commenced our community engagement with the Glenrowan community in 2018, seeking valuable feedback from residents, businesses and community groups. We've heard about issues of pedestrian and cyclist safety, alternative options for the replacement bridge, improving the amenity of Beaconsfield Parade and access to the iconic siege site.

As we progress the designs and approvals in readiness for works to start in late 2021, we will continue to work closely with the community and Rural City of Wangaratta Council to understand and respond to concerns and incorporate feedback into the final design.

While we may not be able to deliver everything that the community is asking for, we are committed to incorporate community feedback and aspirations where we can within the Inland Rail project scope and budget.

WHAT'S NEXT FOR GLENROWAN

We're continuing consultation and engagement with the community over the coming months as we continue to work through various Project Approvals. A key part of this process for the first half of 2021 relates to the proposed Planning Scheme Amendment for local government areas including Rural City of Wangaratta and the Heritage Permit process in Glenrowan.

PLANNING SCHEME AMENDMENT

We are requesting the Victorian Minister for Planning to amend the Planning Scheme for Rural City of Wangaratta. This means the project can progress without the need for additional planning permits, as long as conditions of the Incorporated Document are met to the satisfaction of the Minister for Planning or other relevant authority.

We are voluntarily exhibiting our Planning Scheme Amendment application to the public. Residents, businesses and other stakeholders have an opportunity to submit feedback on the proposed amendments from

19 April to 17 May, 2021.

URBAN DESIGN FRAMEWORK

We have engaged with the Glenrowan Community and the Rural City of Wangaratta Council on Urban Design Framework (UDF) since late 2020.

A UDF is a strategic planning tool that brings a design approach to the Inland Rail Project that ensures the design is consistent with town and precinct strategic aspirations.

The UDF is being used to support our Planning Scheme Amendment and will ensure the strategic design principles and objectives are shown within the design for Glenrowan.

HERITAGE

This project intersects with the iconic Ned Kelly siege site and is protected under the *Heritage Act 2017*, which identifies and protects heritage places and objects that are of State level significance to Victoria.

Inland Rail is applying to Heritage Victoria for a permit to carry out works or activities in relation to this heritage place.

We have engaged technical advisors for onsite inspection and assessment of this heritage place. The results of these assessments will be entered into the relevant government databases, so this information will be available for public comment in the next few months.

We have also engaged with local businesses, residents and community groups regarding the heritage values in Glenrowan to inform our permit application to Heritage Victoria.

MEET THE STAKEHOLDER TEAM



SHONDELLE MATHEWS – STAKEHOLDER ENGAGEMENT ADVISOR

Meet Shondelle who has an employment history that spans 20+ years' experience working on different disciplines across Australia that include health, safety, energy and environment for the WA mining sector throughout the Pilbara, the Federal Government's Green Army programme, managing public transport services for all major events in Melbourne city and major infrastructure projects and rail.

Most recently, Shondelle worked as an Environmental Advisor for the North East Rail Line upgrade and is currently a Stakeholder and Engagement Advisor at ARTC working on the Inland Rail project. Shondelle loves the North East and enjoys the meaningful engagement that has transpired since communing with ARTC. Shondelle believes being able to listen to a community at the right time is what's most important to stay connected and empower them to work with us on delivering a world class project. When Shondelle's not working you can find her enjoying the arts, being creative, riding and watching motorcycles.



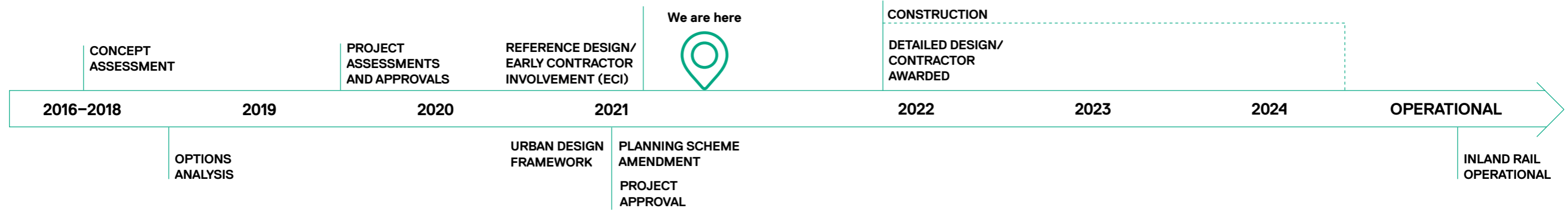
JACINTA PIAZZA – COMMUNITY RELATIONS OFFICER

Jacinta has spent most of her adult life living in our beautiful North East Region. She was born and raised in Wangaratta and has raised her family in this area also.

For the past 10 years, Jacinta has had the opportunity to work within both larger cities and rurally in the mining and construction industry.

Jacinta is passionate about seeing our North East towns progressing into the future for our younger generations. One of her favorite activities is spending time outdoors in our wonderful valleys.

KEY STEPS TO DELIVER INLAND RAIL IN GLENROWAN



Developing Inland Rail in consultation with communities

CONCEPT ASSESSMENT (2016–2018)

Identify and assess project objectives, outcomes, benefits and route options. Document technical issues, regulatory requirements, estimated costs, timings and potential risks and opportunities.

CONSULTATION AND OPTIONS ANALYSIS (2018–2019)

Consultation with Council and communities to inform design principles.

PROJECT ASSESSMENT AND APPROVALS (2019–2021)

Undertake site investigations and specialist studies to understand environmental features, technical challenges, progress State and Federal planning and environment approvals. We're currently focused on the proposed Planning Scheme Amendment, which incorporates site-specific controls via an Incorporated Document.

URBAN DESIGN FRAMEWORK (2020–2021)

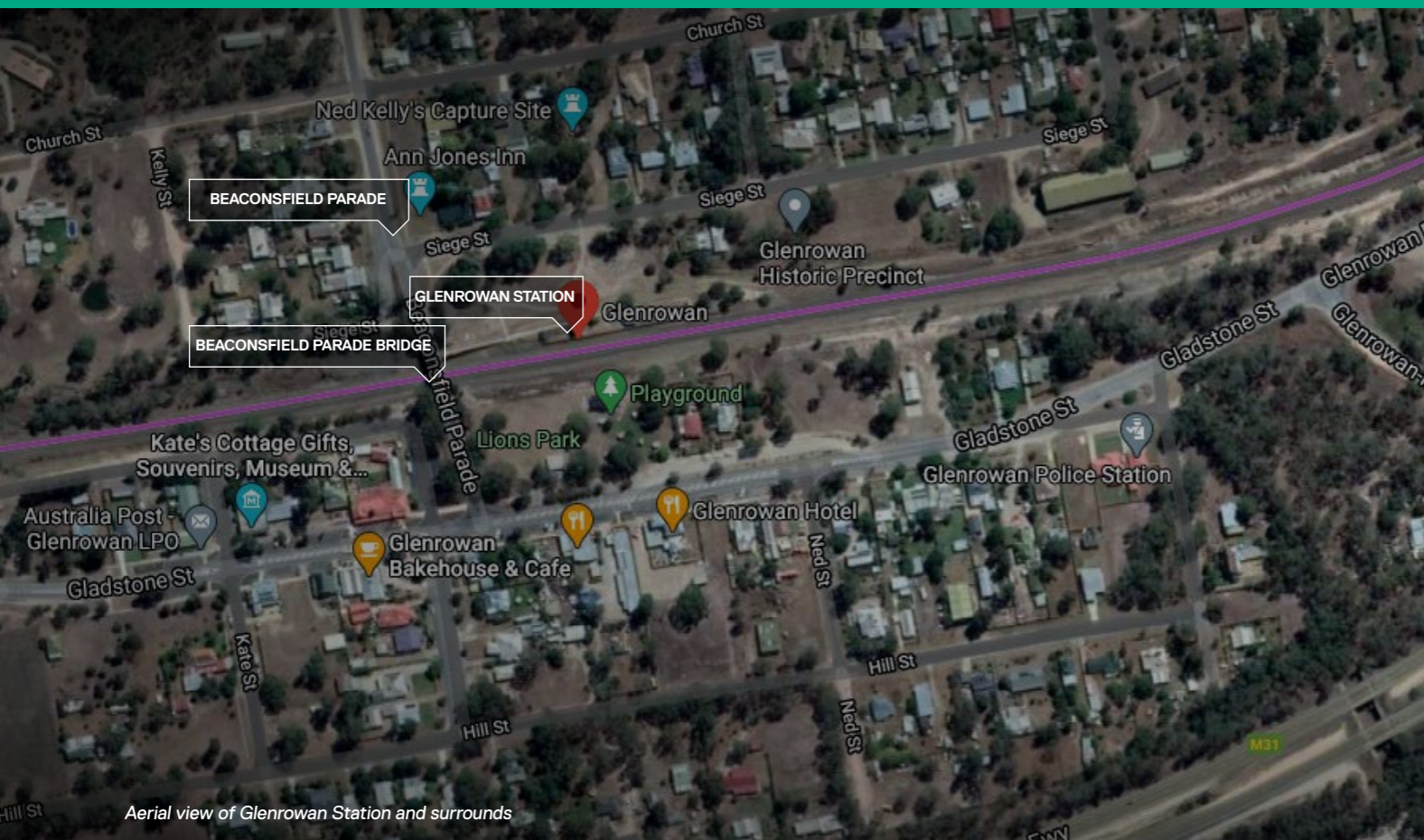
Comprehensive design and consultation process that brings together the way the infrastructure needs to function with how it looks, feels and works for locals. Ensure the project design is well-integrated and responds to community ideas.

REFERENCE DESIGN/ EARLY CONTRACTOR INVOLVEMENT (2021)

Produce reference design to be provided for community discussion, feedback, and refinement. Engage construction contractor before designs are finalised to review plans and suggest any revisions needed to deliver the project.

DETAILED DESIGN/ CONTRACTOR AWARDED

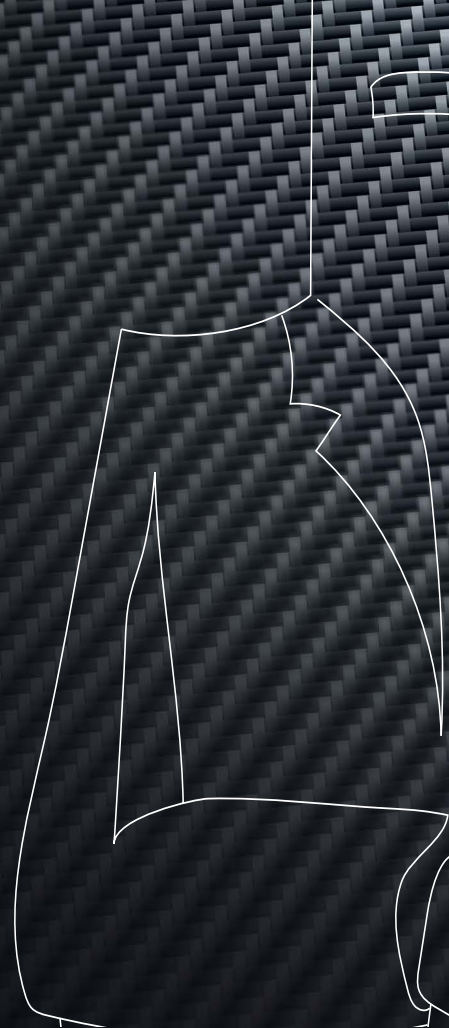
Produce detailed design to be provided for further community discussion, feedback, and refinement. Detailed design prepared by construction contractor to define specifics like car parking location, lighting, walkway locations and landscaping.



Aerial view of Glenrowan Station and surrounds



Ned Kelly statue at the Glenrowan Siege Precinct



Artist impression of Ned Kelly statue at the Glenrowan Siege Precinct



HAVE YOUR SAY ON THE DESIGN OF THE GLENROWAN RAIL UPGRADE

In April and May 2021 we'll be seeking your feedback on our proposed Planning Scheme Amendment, which includes Rural City of Wangaratta Council.

Email victoriaprojects@artc.com.au

Drop by every **second Tuesday at Lion's Park, Glenrowan (10am–1pm)**

Visit inlandrail.artc.com.au/events for more information.

LEARN MORE

The Tottenham to Albury website is a comprehensive resource where we publish regular project updates, documents such as fact sheets and working group minutes, and is where you will find the interactive map.


Check out some recently updated fact sheets:

- inlandrail.artc.com.au/managing-noise-and-vibration-fact-sheet
- inlandrail.artc.com.au/urban-design-framework
- inlandrail.artc.com.au/flora-fauna-vic
- inlandrail.artc.com.au/aboriginal-cultural-heritage-vic
- inlandrail.artc.com.au/vic-land-access
- inlandrail.artc.com.au/planning-scheme-amendment

For more information on the latest approvals processes for the project, visit inlandrail.artc.com.au/t2a-status

WANT TO KNOW MORE?

ARTC is committed to working with communities and landowners, state and local government as a vital part of our planning and consultation work, and we value your input. If you have any questions or comments, please let us know.

 **1800 732 761**

 **victoriaprojects@artc.com.au**

 **inlandrail.artc.com.au/t2a**

ARTC

The Australian Government is delivering Inland Rail through the Australian Rail Track Corporation (ARTC), in partnership with the private sector.