



INLAND RAIL

Narrabri to North Star – Phase 1 Meet the Contractor Sessions

30 November to 2 December 2020



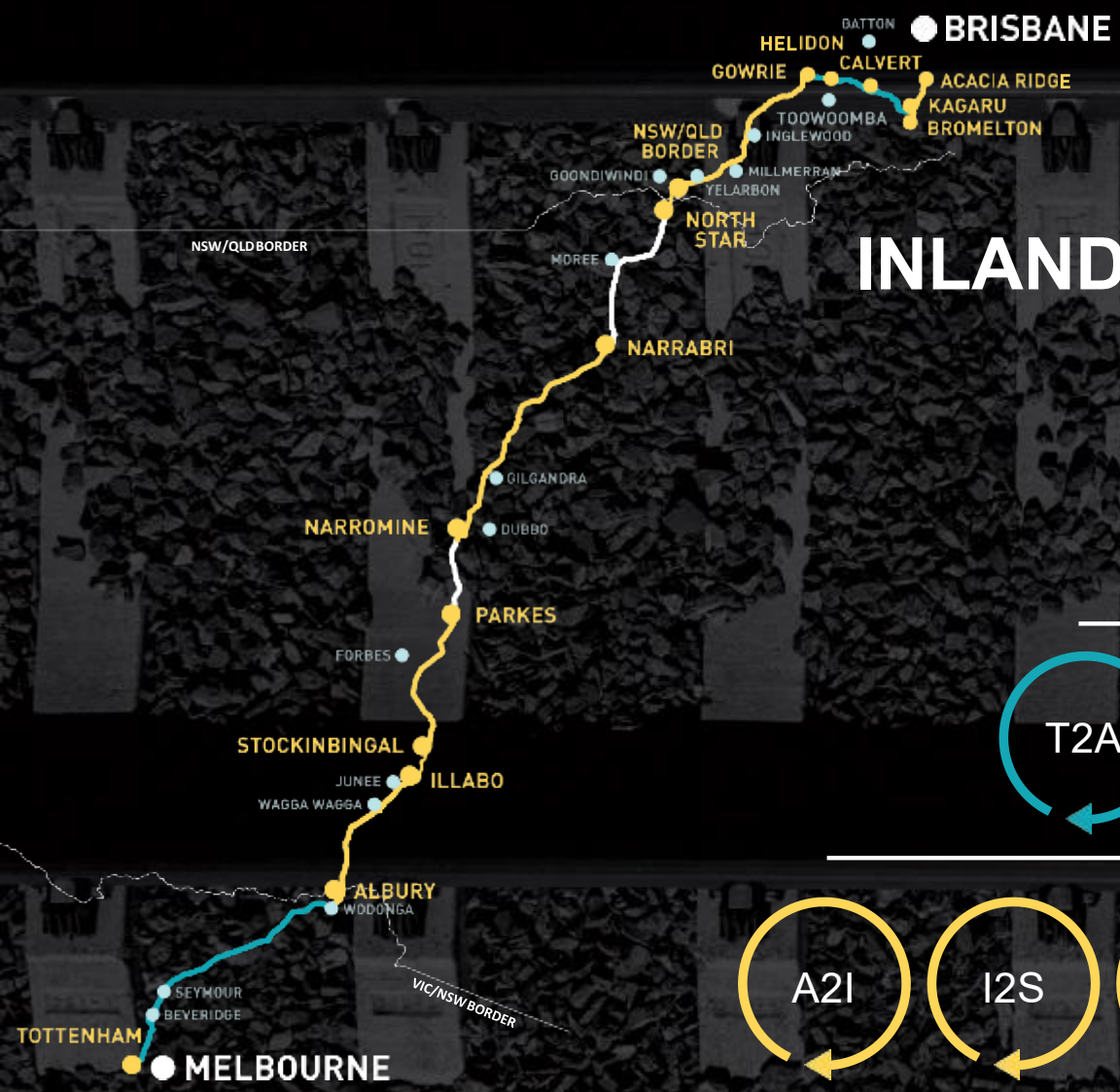
AGENDA – COMBINED SESSION

- ▶ Housekeeping
- ▶ Welcome to Country
- ▶ Australian Rail Track Corporation
 - ▶ Introduction/ overview
- ▶ Trans4M Rail
 - ▶ Introduction/ project overview
 - ▶ Information for jobseekers
 - ▶ Information for suppliers
- ▶ Question and answer session
- ▶ Close



INLAND RAIL

Jason Manttan – Supply Chain and Social Compliance
Manager, Inland Rail



INLAND RAIL PROGRAM STATUS



PROJECTS IN DELIVERY



PROJECTS IN PROCUREMENT



PROJECTS YET TO BE PROCURED

WORKING WITH INLAND RAIL



Local content

Includes any employment, training and development, contracting and procurement of people, goods and services.

Actively seek local participation:

- ▶ - LGAs along project corridor
- ▶ - Region (LGAs within 125km of project corridor)
- ▶ - Rest of state
- ▶ - Rest of Australia

Drivers

- ▶ Regulatory
- ▶ Social Licence
- ▶ Commercial
- ▶ Political

Legislation / Policy

- ▶ Australian Jobs Act 2013
- ▶ Commonwealth Indigenous Procurement Policy 2015
- ▶ Modern Slavery Act 2018
- ▶ Sustainable Procurement Policy
- ▶ Social Performance Program / Strategy

Australian Jobs Act 2013

Australian Industry Participation plan

Inland Rail Program

AJA0027

1 July 2020

Sustainable Procurement Policy



Inland Rail is committed to identifying and managing the social, environmental and economic risks and opportunities within our supply chain. We recognise that improving our procurement performance is an ongoing process and that our suppliers are important partners in helping us achieve a positive legacy through design and construction of our program. We have utilised the AS 5500:2018 Sustainable Procurement Guidance to embed sustainability in our procurement practices.

Objectives

- ▶ Procure goods and services that cost-effectively deliver long term benefit to the asset, the environment and local communities
- ▶ Provide clear and early signals to the supply market to increase the availability and effectiveness of sustainable solutions that meet our organisational requirements
- ▶ Encourage our major suppliers and service providers to adopt sustainable and ethical practices in their organisation and drive such practices in their own supply chain
- ▶ Deliver procurement strategies that are responsive and adaptive to the local and regional context
- ▶ Implement the objectives and commitments outlined in this policy and pursue continuous improvement to achieve measurable change

Commitments

- Inland Rail has considered the key sustainability issues that we will address through our procurement practices and supply chain and are committed to working with our current and future suppliers to achieve:
- ▶ Greater awareness of the benefits of sustainable procurement within Inland Rail and across our supply chain
 - ▶ Collaborate to manage community and stakeholder expectations and regulatory requirements
 - ▶ Targets, capability development and transferrable skills pathways for local and Indigenous businesses, individuals and social enterprises
 - ▶ Work collaboratively to achieve an Infrastructure Sustainability Council of Australia 'excellent' program-wide rating
 - ▶ Incorporate Total Cost Ownership and Life Cycle Cost considerations in relevant tenders
 - ▶ Ensure working conditions for staff and sub-contractors are suitable for environmentally harsh conditions such as drought
 - ▶ Cultural understanding and positive engagement with Traditional owners
 - ▶ Manage and mitigate modern slavery issues in the procurement of products and/ or services
 - ▶ Innovate and implement technologies, processes and options that significantly reduce water, energy and waste during design, construction and operations
 - ▶ Maximise opportunities for procurement of construction materials that have low embodied energy and water profile
 - ▶ Maximise opportunities for procurement from local and Indigenous businesses and social enterprises across Inland Rail program and projects
 - ▶ Maximise opportunities to procure environmentally certified products or services for office stationery and equipment
 - ▶ Quality data management practices and reporting of outcomes



Marnie Evans
Director Program Operations – Inland Rail
12 March 2020

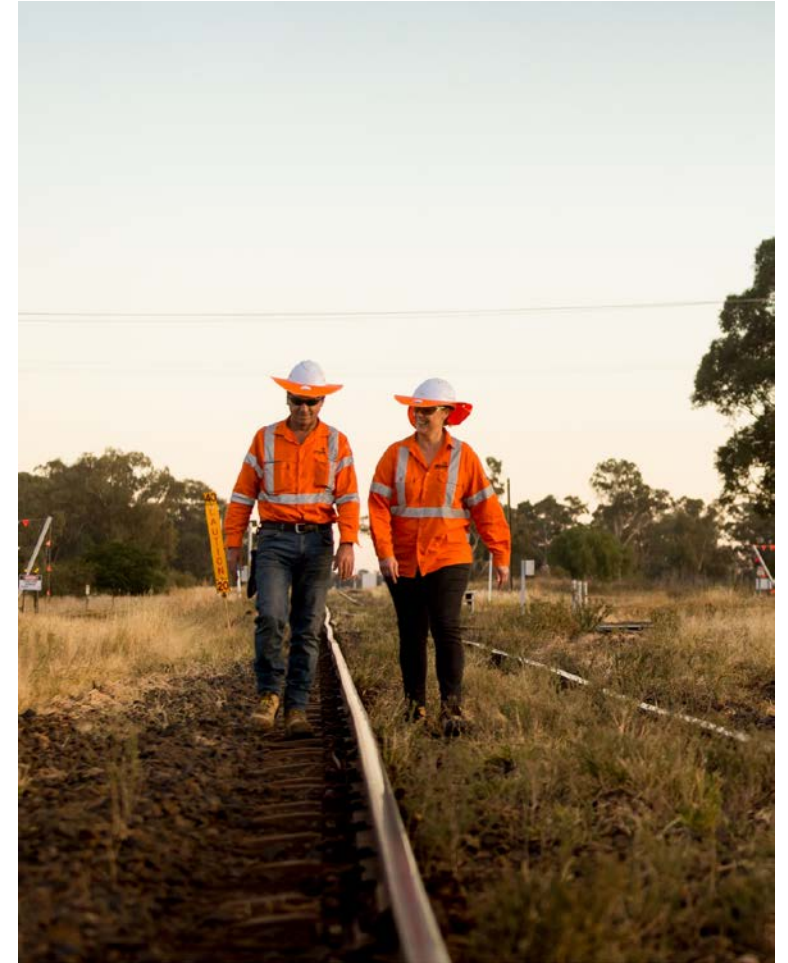


The Australian Government is delivering Inland Rail through the Australian Rail Track Corporation ARTC in partnership with the private sector.

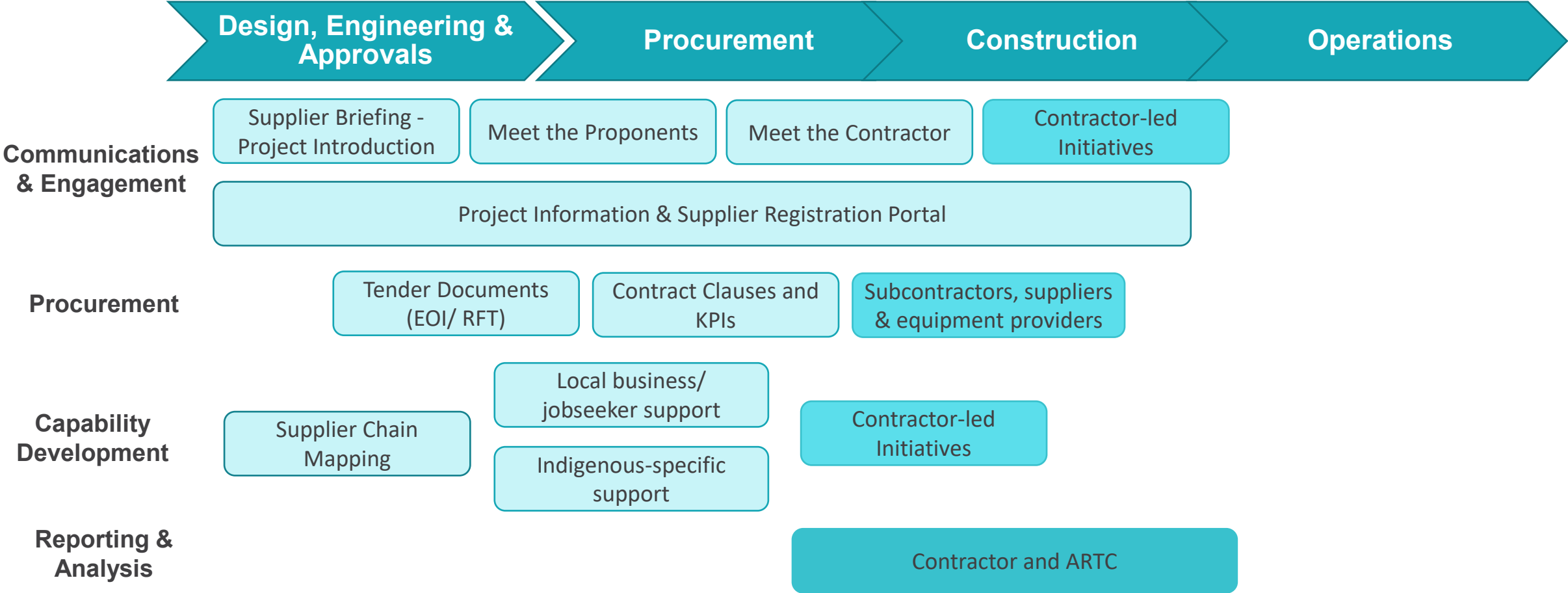
WORKING WITH INLAND RAIL

OUR COMMITMENTS

- ▶ Use **local suppliers**, **skills** and **labour**, where possible, and ensure **environmental**, **social** and **economic** considerations are embedded in our procurement process.
- ▶ Provide **full**, **fair** and **reasonable** opportunity for capable and competitive Australian entities to participate in the procurement of goods, services and equipment.
- ▶ Responsibly deliver and operate Inland Rail with the **least social impact** possible, while **enhancing the benefits Inland Rail delivers to the people of Australia** at both a local and national level.



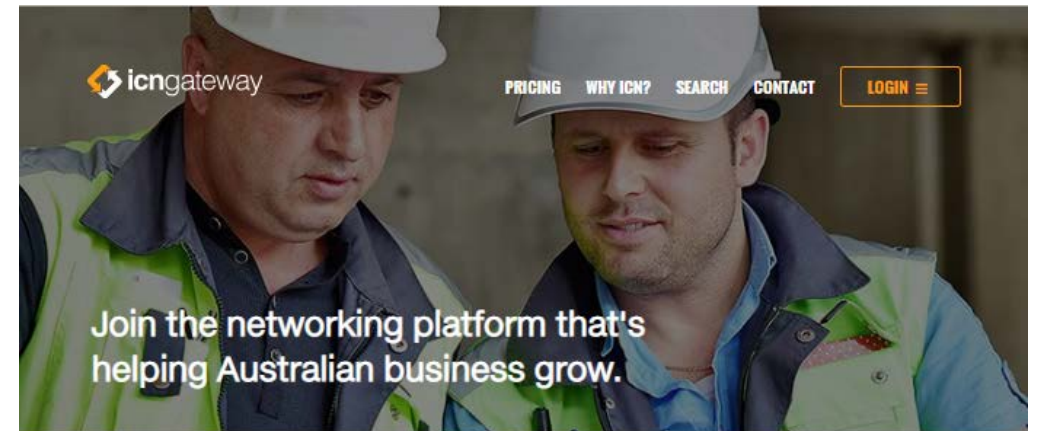
SUPPLY CHAIN & WORKFORCE PARTICIPATION



DOING BUSINESS WITH INLAND RAIL

CURRENT PROJECT OPPORTUNITIES

- ▶ Narrabri to North Star – Phase 1
 - inlandrailn2ns.icn.org.au
- ▶ Tottenham to Albury – Phase 1 (from 8 December)
 - inlandrailand2a.icn.org.au
- ▶ Inland Rail – Any Opportunities
 - inlandrail.icn.org.au
- ▶ Create a company profile and register interest against project-specific work packages
- ▶ Registrations of interest will be provided to ARTC, shortlisted proponents and Principal Contractors.
- ▶ ICN preparing supply chain reports for each project.



What is ICN?


ICN helps bring Australian suppliers and project owners together by giving exclusive access to our powerful online database and our extensive network of Business Growth consultants. The result: more work for Australian businesses.

JOIN NOW

A screenshot of the ICN search interface. It is divided into two main sections: 'Looking for suppliers?' on an orange background and 'Looking for work?' on a dark blue background. Each section has a search bar with placeholder text 'Keywords e.g. electrician, glass etc', a 'Choose state' dropdown menu, and a 'Choose region' dropdown menu. Below the search fields are buttons labeled 'FIND SUPPLIERS' and 'FIND WORK' respectively.

Jason Manttan

 irsuppliers@ARTC.com.au

 1800 732 761

inlandrail.com.au



**INLAND
RAIL** 

ARTC

The Australian Government is delivering Inland Rail through the Australian Rail Track Corporation (ARTC), in partnership with the private sector.

THANK YOU

INLAND
RAIL 



INLAND RAIL

Trans4M Rail



TRANS 4.M
RAIL 

Trans4m Rail



About Trans4m Rail

The **Australian Government** is delivering Inland Rail through the **Australian Rail Track Corporation (ARTC)**, in partnership with the private sector.

The Phase 1 contract for the delivery of **Narrabri to North Star (N2NS)** was awarded to **Trans4m Rail** in October 2020. Trans4m Rail combines the experience of **John Holland** and **SEE Civil**.

Rhomberg Rail has also joined the team as an exclusive sub-contractor partner and along with the delivery agency of **Inland Rail**, these four organisations will work together in delivering a key piece of infrastructure for **Australia's increasing freight demands**.



Who are we?



John Holland

John Holland is one of Australia's leading rail contractors, with a proven record of delivering rail infrastructure projects throughout Australia and internationally. The company has recently completed the Sydney Metro Northwest and is the current maintainer of NSW's Country Regional Network.



SEE Civil

SEE Group is a family-owned group of companies which has been specialising in civil construction and engineering for over 30 years. SEE Civil has experience across the depth and breadth of the civil construction industry including road and transport infrastructure, water and utilities, rail and airside construction as well as construction for residential, commercial and industrial developments.



Rhomberg Rail Australia

Rhomberg Rail Australia is one of the largest self-delivery rail companies in Australia, and delivers rail works across the design to construction and maintenance lifecycle. Rhomberg has an intimate understanding of ARTC's operations having delivered 400 separate projects over the last 5 years and encompass a workforce that hold extensive amount of individual ARTC competencies available.



Australia Rail Track Corporation

The **Australian Rail Track Corporation (ARTC)** has been appointed by the Australian Government to deliver Inland Rail, the multi billion-dollar infrastructure programme, in partnership with the private sector. Inland Rail is a 1,700km freight rail line that will connect Melbourne and Brisbane via regional Victoria, New South Wales and Queensland.

Snapshot





High level Snapshot

Timeframe	Scope	Our office
<p>Trans4m Rail will deliver the Inland Rail – Narrabri to North Star, Phase 1 by March 2023.</p> <p>Early works commence in early January 2021 and major construction commences in April 2021.</p>	<ul style="list-style-type: none">• Upgrade the existing rail line• Re-establishing and/or expanding drainage works next to the track• Replacing existing culverts and adding new culverts• Significant level crossing works including adding flashing lights and boom gates at key sites• Replacement of bridges• Establishing five crossing loops to allow trains to pass• Minor changes to track alignments at Bellata, Gurley and Moree stations• Providing a new road overpass over the existing rail corridor at Moree and replacing the Newell Highway overpass near Bellata.	<p>Moree Trans4m Rail's primary office will be based in Balo Street, Moree.</p> <p>Bellata & Croppa Creek Satellite offices for Engineering and support staff will be established at these locations.</p> <p>Helensvale Originally the tender office, staff will still be based in this office to assist with project delivery.</p>

Project requirements

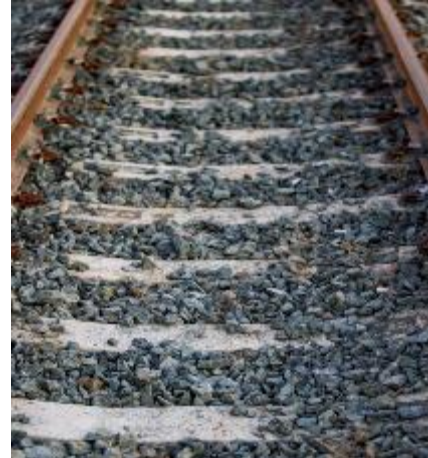




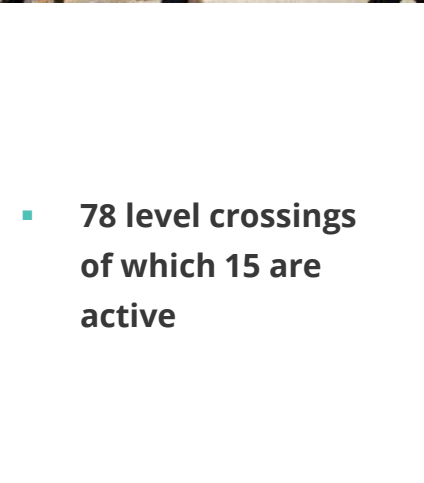
- 500 directly employed staff at peak
- 350 bed temporary workers facility



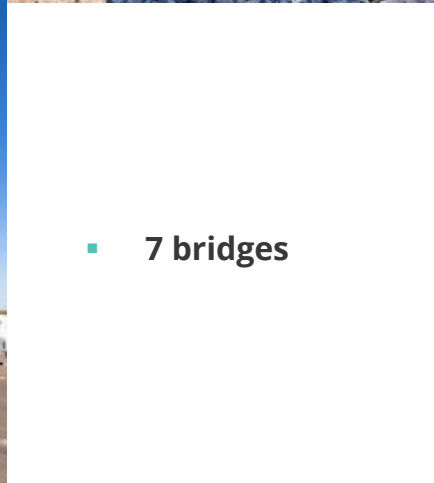
- 341, 225 sleepers to install



- Nearly 25,000 tonnes of rail



- 78 level crossings of which 15 are active



- 7 bridges



- 37,000 tonnes of lime for embankment works
- 100 tonnes moved a day



- 330 concrete culverts
- 9,100 segment pieces
- 100 deliveries per week for 18 months

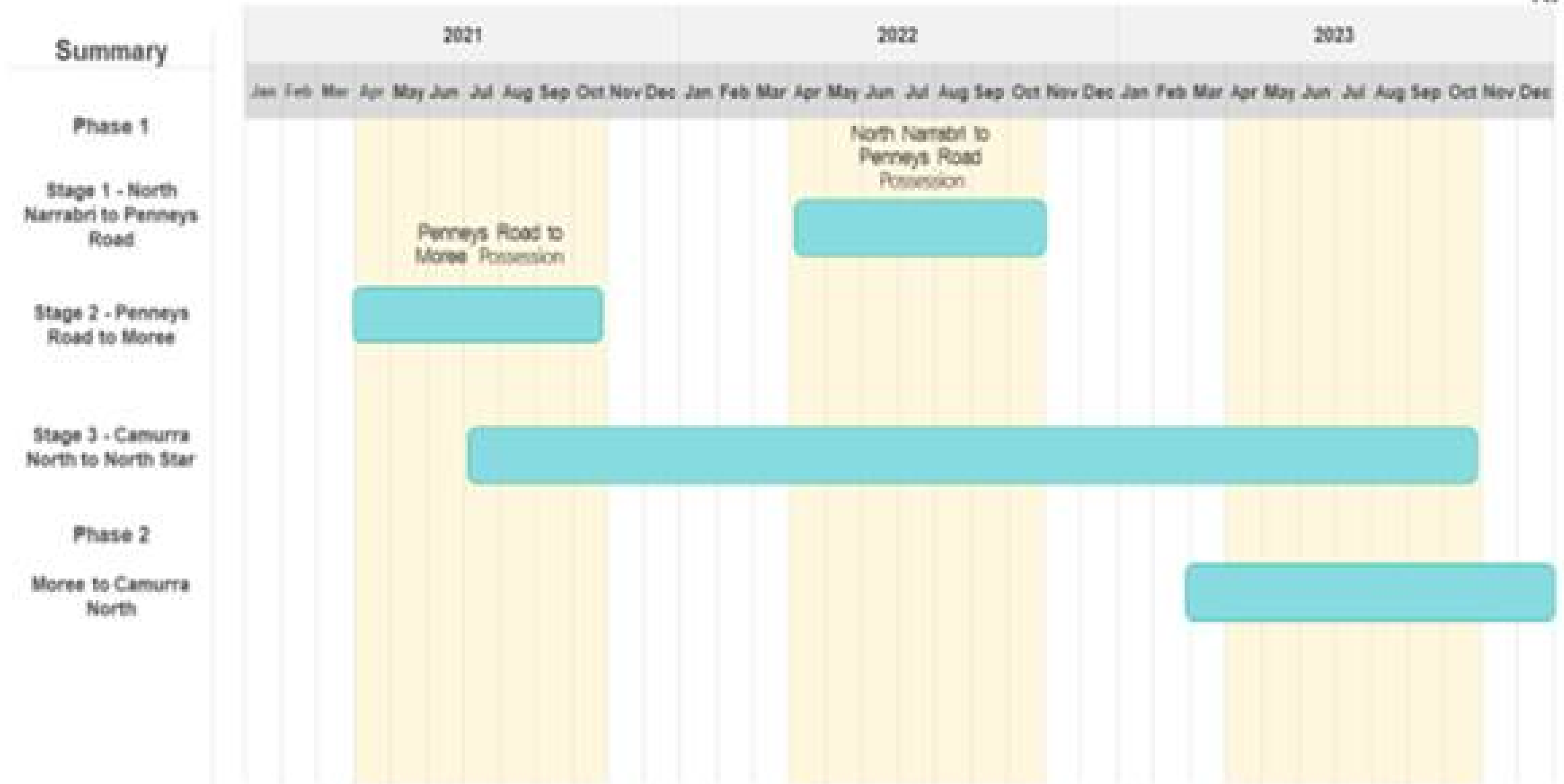


- 2,100,000 m³ dirt to move



- 700,000 tonnes of ballast & 700,000t of capping

NARRABRI TO NORTH STAR - POSSESSION SCHEDULE



The next 6 months



The next 6 months

November 2020

- Key procurement:
 - Lime stabilisation
 - Temporary worker facility
 - Office accommodation
 - Pre-cast concrete
- Trans4m Rail's website went live

December 2020

- Temporary laydown establishments to begin
- Long lead procurement
 - Stress bars for culverts
 - Rail signalling equipment & resources
 - Pile casings

January 2021

- Majority of project management plans approved
- First precast culvert units to be cast at Supplier's premises.
- Fit out of offices to commence
- Subcontractor and supplier onboarding

February 2021

- CEMP and EPL to be granted by DPIE and EPA
- Work ready Program expected to kick off
- Precast culvert deliveries
- Temporary worker facility construction to commence
- Subcontractor and supplier onboarding

March 2021

- Potential early 'soft start' formation work in stage 3 ahead of stage 2 possession
- Workforce onboarding
- Subcontractor and supplier onboarding

April 2021

- **Major** construction activities to commence
- Temporary worker facility construction completed
- Workforce onboarding

Employment



Opportunities

Opportunities

Trans4m Rail will be offering a variety of employment opportunities to suitably skilled and qualified candidates who have experience in the civil and rail construction fields.

We are strongly encouraging candidates who:

- Reside in the local area (Narrabri, Moree & Gwydir Shires)
- Reside in the regional area surrounding the local areas

A total workforce of 450 during the Project life cycle

Professional Roles

- Administration support
- Safety professionals
- Training professionals
- Human Resource professionals
- Community Liaison Officers
- Project engineers
- Supervisors in the fields of logistics, track and civil Works

Trades, Labour & Operator

Rail roles

- Linesman
- Track workers

Construction roles

- Plant operators
- General labourers
- Trades assistant

Trade roles

- Carpenters
- Boilermakers
- Mechanical Fitters

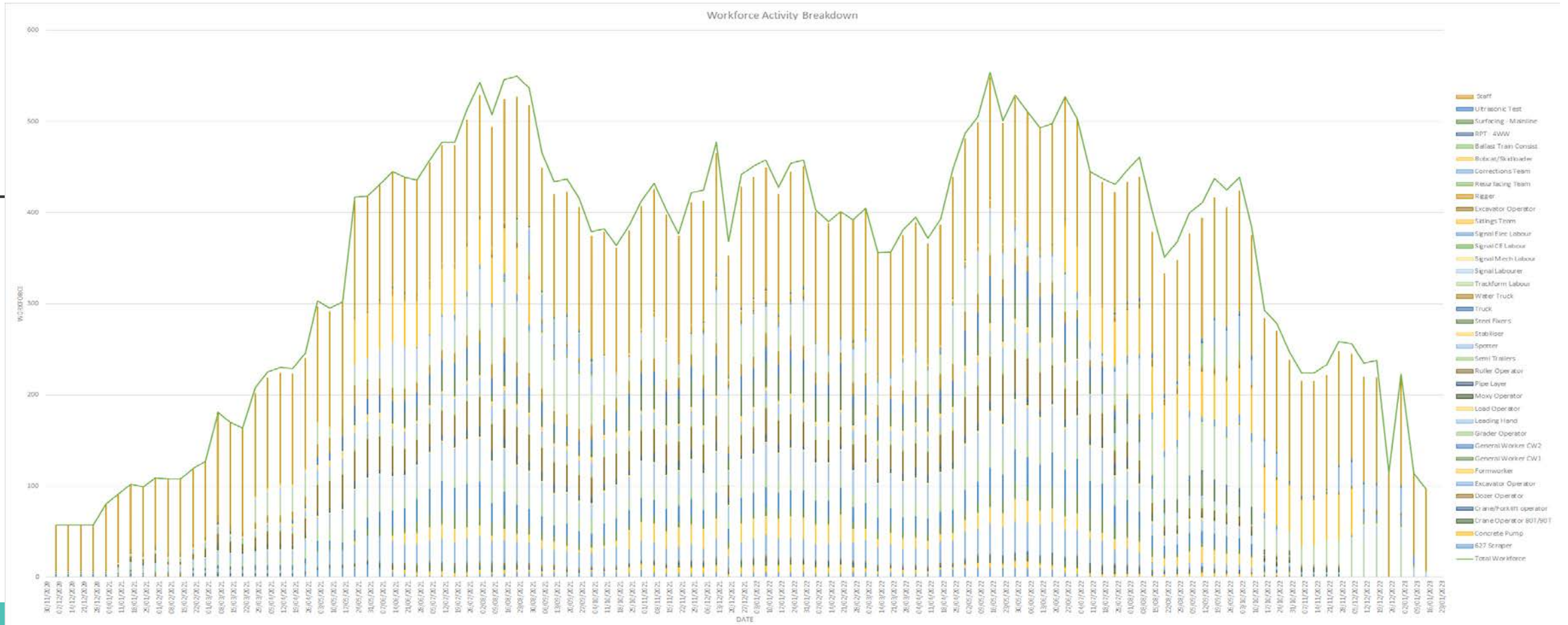
Entry Level Roles

- General labourers
- Trades assistants
- Cleaners
- Plant operators
- Rail workers

Workforce Planning

When do the roles commence?

We anticipate that a small workforce crew due to commence January 2021 – approx. 15 roles to start early January 2021 and then ramping up to peak close to July 2021.



T&C's Overview /Preparation

Workforce conditions overview

- Roster – all Workforce will be on a 2/1 roster arrangement – 2 weeks work / 1-week rest & recreation (R&R)
- Hours of work – 6.30am - 5.00pm every day
- Daily travel arrangements – Company provided transport to and from work location each day whilst on roster – this is a BUS IN / BUS OUT project, driving to work front locations is not permitted.
- Accommodation – Company provided accommodation whilst on roster for non-local based hires
- Relevant Personal Protective Equipment (PPE) provided by Company

T&C's Overview /Preparation

Pre-employment requirements

- Full Medical (including Cat 3), Drug and alcohol testing – this must be completed prior to formal offer
- Construction Safety Card – Mandatory (if you do not hold one, support and training to obtain the relevant will be provided)
- Rail Industry Worker (RIW) card – Mandatory
- Various E learning and Inductions – to be completed prior to obtaining RIW card
- Role specific tickets – i.e. – Plant Operator

New Entrants

You may not necessarily hold the skills and experience; however, we will be looking for people with the following qualities to fill these roles:

- Punctual and able to get to work on time
- Good work ethic
- Willing to bring the necessary energy and effort to learn and get the job done
- Able to receive and apply feedback and coaching from others

— If you are interested in being considered for a new entry role, you must be prepared to participate in the Trans4m Rail Work Ready Program. This program is designed to prepare new entry candidates for what they can expect if offered a position with the Trans4M Rail team.

Your local job network and employment provider may be able to assist you in preparing your expression of interest.

Register your interest by emailing us at jobs@t4mr.com.au with the following details:

- Your current resume
- Your correct contact information
- The type of role you are interested in – I.e operator, labourer, engineering assistant
- A brief summary of the qualities you believe you can bring to the role and our team

Shortlisted candidates will be contacted as new entry opportunities arise on the project.

How do I apply for a job?

www.Trans4mrail.com.au

How do I prepare and apply for a job

- All applications to be submitted via the Trans4m Rail portal – this ensures a central point for applications and or expressions of interest.
- Our Jobs and Skills Hub, that will be located on Balo Street, Moree will provide all the necessary tools needed to support applicants through the process – expected to open Feb 2021 (travel options available)
- All applications need to be submitted via the Trans4m Portal – this ensures a fair and equal sourcing and recruitment process for all potential candidates.
- Job Network and Employment Providers will be available as a support for job seekers.
- If you are a registered candidate in the John Holland Careers portal, you would just log back into your profile using your email address and password(or reset password). You will then be able to update your profile with the relevant info including selecting Trans4m Rail N2NS as a project of interest and positions of interest.

EMPLOYMENT

We'll be employing hundreds of people in the area to build the infrastructure in this section of Inland Rail.

? Could you help us build it?

We are looking for reliable and highly motivated individuals to join our project team. You'll need to be committed to safety, community and environmentally friendly work practices and achieving quality results in everything you do.

Employment opportunities will be open to people who have had previous experience in the rail and civil construction industry and want to further develop their skills.

If you're new to the industry and looking for career progression you're also encouraged to apply.

Opportunities for direct employment will be available to youth, Aboriginal and Torres Strait Islander people, applicants from disadvantaged groups and residents within close proximity of the project alignment.

? Next step?

If you want to be part of a team delivering an iconic infrastructure project, please express your interest below.

Visit our [jobs page](#) for information on our current opportunities:

[CURRENT EMPLOYMENT OPPORTUNITIES](#)



EMPLOYMENT

We'll be employing hundreds of people in the area to build the infrastructure in this section of Inland Rail.



Could you help us build it?

We are looking for reliable and highly motivated individuals to join our project team. You'll need to be committed to safety, community and environmentally friendly work practices and achieving quality results in everything you do.

Employment opportunities will be open to people who have had previous experience in the rail and civil construction industry and want to further develop their skills.

If you're new to the industry and looking for career progression you're also encouraged to apply.

Opportunities for direct employment will be available to youth, Aboriginal and Torres Strait Islander people, applicants from disadvantaged groups and residents within close proximity of the project alignment.



Next step?

If you want to be part of a team delivering an iconic infrastructure project, please express your interest below.



Visit our jobs page for information on our current opportunities:

[CURRENT EMPLOYMENT OPPORTUNITIES](#)

Select Current Employment Opportunities





Join Our Team

Trans4m Rail will be offering a variety of employment opportunities to suitably skilled and qualified candidates who have experience in the Civil and Rail construction fields.

We are strongly encouraging candidates who:

- Reside in the local area (Narrabri, Moree & Gwydir Shires)
- Reside in the regional area surrounding the local areas

Our project team has a highly inclusive approach to employment and strongly encourage applicants from all backgrounds and walks of life.

If you are new to the workforce or the construction industry and are looking to kick start your career, check out the Entry Level Roles that may offer the opportunity you are looking for.



Professional Roles



Trades, Labour & Operators Roles



Entry Level Roles

Select the type of role relevant to your experience

New Entrants

Are you looking for an opportunity to get your career started but not sure where to start? Trans4m Rail will offer a range of entry level positions, with no industry experience required.

For successful candidates, we can offer a high level of training, professional development and support from seasoned construction industry professionals who want to see you succeed!

The following is a list of roles that will be open for entry level applicants:

- General Labourers
- Trades Assistants
- Cleaners
- Plant Operators
- Rail Workers



You may not necessarily hold the skills and experience; however, we will be looking for people with the following qualities to fill these roles:

- Punctual and able to get to work on time
- Good work ethic
- Willing to bring the necessary energy and effort to learn and get the job done
- Able to receive and apply feedback and coaching from others

If you are interested in being considered for a new entry role, you must be prepared to participate in the Trans4m Rail Work Ready Program. This program is designed to prepare new entry candidates for what they can expect if offered a position with the Trans4M Rail team.

Interested? Register your interest by emailing us at jobs@t4mr.com.au with the following details:

- Your current resume
- Your correct contact information
- The type of role you are interested in – see the list above for reference
- A brief summary of the qualities you believe you can bring to the role and our team

For “New Entrants” please click email address and attach the required documents as listed above

Professional Roles

If you are looking for a professional role with our team, we may have the opportunity for you. We anticipate the need for a variety of professional roles to join our team over the life of the project. If you feel you may be suited to work in one or more of these fields and you cannot see a current vacancy, please register your interest below and we will reach out to you if an opportunity arises.

- Information Technology Support
- Administration Support for Commercial, Safety, Environmental, Quality, Human Resources and Office Management
- Safety Professionals
- Training Professionals
- Human Resource Professionals
- Community Liaison Officers
- Commercial Professionals including Contracts Administration, Accounts, Procurement, Cost Control and Quantity Surveying
- Project Engineers
- Junior Technical Construction Support
- Supervisors in the fields of Logistics, Track and Civil Works

To view our current Vacancies for Professional Roles

Click Here

Select Click Here tab

Trades, Labour & Operators Roles

If you are looking for an opportunity to join our team in a trades, labour or operator role, we may have the opportunity for you. We anticipate the need for a variety of field-based roles over the life of the project. If you feel you may be suited to work in one or more of these fields and you cannot see a current vacancy, please register your interest below and we will reach out to you if an opportunity arises.

Rail Roles

- Rail Track Workers
- Flashbutt Welder Operators
- Hi-Rail Operators
- Leading Hands - Rail
- Tamper Operator
- Regulator Operator
- Rail Grinder Operator
- Ballast Cleaner Operator
- Safe-working Coordinators
- Safe-working Protection Officers Flagman
- Ballast Consolidator
- Traction Supervisor
- Traction Linesman
- Distribution Linesman

Trades Roles

- Carpenters
- Boilermakers / Welder
- Mechanical Fitters

Roles that will be hired by our subcontractors

- Plumbers
- Electricians
- Traffic Controllers

Skilled Construction Roles

- Plant Operators
- General Labourers
- Formworkers
- Concreters
- Pipelayers
- Trades Assistants
- Steel Fixers
- Grade Checkers
- Leading Hands - Civil
- Crane Operators
- Peggies (Cleaners)
- Riggers and Dogman
- Welder

Can't find a current vacancy that suits you?

If you would like to register your interest for upcoming vacancies, please click the link below and provide us with your details.

Email Address...

Sign up now

Already a member? [View profile](#)

To view our current vacancies for Trades, Labour & Operator Roles

Click Here

Select “Sign up now” tab

Select Click Here tab

Search by Keyword

Search by Location

Search Jobs

Clear

Show More Options

Send me alerts every days [Create Alert](#)

Save Category as RSS Feed



Results 1 - 13 of 13

Title	Job Category	Location
<input type="text" value="Title"/>	<input type="text" value="Job Category"/>	<input type="text" value="Location"/>
		Filter Reset
Safety and Training Administrator	Safety, Environment, Quality	Moree, NSW, AU, 2400
Project Resourcing Manager	HR	Moree, NSW, AU, 2400
Accounts Officer	Accounting & Finance	Moree, NSW, AU, 2400
Project Engineer - Pavements	Engineering - Civil	Moree, AU
Contracts Administrator	Administration	Moree, NSW, AU, 2400
Senior Safety Advisor	Safety, Environment, Quality	Moree, NSW, AU, 2400
Project Engineer - Traffic & Road Works	Engineering - Civil	Moree, NSW, AU, 2400
Senior Project Engineer	Engineering - Civil	Moree, AU
Construction Manager	Construction Project Management	Moree, AU
Senior Project Engineer	Engineering - Civil	Helensavle, QLD, AU, 4212
Procurement Officer	Procurement, Logistics	Helensavle, QLD, AU, 4212
Document Controller	Safety, Environment, Quality	Moree, NSW, AU, 2400
People & Social Performance Administrator	HR	Moree, NSW, AU, 2400

Safety and Training Administrator

Date: 25-Nov-2020

Location: Moree, NSW, AU, 2400

Company: John Holland

About the Project

Spanning more than 1,700km, the Australian Government is delivering Inland Rail through the Australian Rail Track Corporation (ARTC), in partnership with the private sector.

The Narrabri to North Star (N2NS) section is one of 13 projects that complete Inland Rail and is an upgrade of approximately 188 km of track within the existing rail corridor and construction of approximately 1.6 km of new rail track. The works are required to accommodate the operation of future planned 1,800 m double-stacked freight trains.

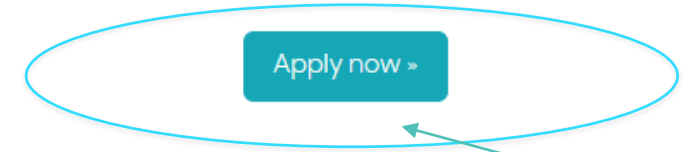
The contract for the delivery of Narrabri to North Star (N2NS) was awarded to Trans4m Rail in November 2020. Trans4m Rail combines the experience of John Holland and SEE Civil Pty Ltd.

About the Role

Trans4M Rail has commenced mobilisation and currently seeking a Safety & Training Administrator to provide an effective administration and data management service to our project team based in Moree, NSW. We'd love to hear from individuals within the local area who possess strong administration and data management experience in a similar role.

Key responsibilities will include:

- Manage and maintain all project HSE records
- Assist in the onboarding of employee's, contractor and management of the Rail Industry Worker program (RIW)
- Design and maintain complex tracking spreadsheets for HSE data and paperwork, including but not limited to KPIs, AOD testing, Hazard Cards etc



Select Apply now tab



Career Opportunities: Sign In

Already have an account?

Enter your email address and password (both are case-sensitive).

*indicates a required field.

*Email Address:

*Password:

Sign In

[Forgot your password?](#)

Not a registered user yet?

[Create an account](#) to apply for our career opportunities.

Local Procurement



Procurement Packages

Package		Tentative Dates
Plant and Equipment	Earthmoving, compaction, transport	November 2020 onwards
Survey	Surveyors	November 2020
Water Supply	Supply of water along alignment	November 2020
Bridge Construction	Cranes, concretors, steelfixers, pipelayers, formworkers, riggers, concrete supply	December 2020
Culvert Construction		December 2020
Quarry Supply - North	Fill, Roadbase, sand, gravel, ballast	December 2020
Quarry Supply - South		June 2021
Rail and Signalling Specialists	Salvage contractors, plant operators, track labour	January 2021
Level Crossings	Roadworks Subcontractors	January 2021
Fuel Supply	Supply and delivery of fuel	November 2020
Other	le guardrail, signs, demolition, landscaping	From January 2021

Registering Interest

Tell us about your company:

WHAT:

- Capability
- Code Compliance
- Policies/Procedures (SQE)
- Sustainability Practices
- Commitment to Social Procurement

WHERE:

ICN Gateway: <https://inlandrain2ns.icn.org.au>

procurement@t4mr.com.au

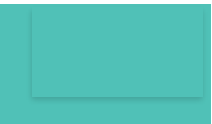
WHEN:

Now

Registered entities details will be obtained from these locations for inclusion in appropriate tender packages. Strong preference to use ICN Gateway for all registrations of interest.

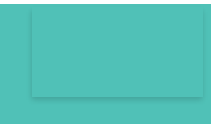
Tender Process

- Tender to Award – 4 to 8 weeks – some complex packages are longer
- Building Code 2016 Compliance (Compulsory)
- Aconex Tender Module
- Invitations to Tender
 - Contract/Scope/SQE Reqs/Specs/Drawings/etc
- Tenders returned by Close Date
 - Form to Tender
 - Pricing Schedule
 - Qualifications
 - Insurances
 - Sustainability Questionnaire
- Vetting Process
 - Safety/Quality/Environment Performance
 - Pricing
 - Social Delivery targets
- Contract Award – through Aconex



Key Items

- Lots and lots of documents / paperwork
- Compliance
 - Building Code 2016
 - Safety
 - Quality
 - Environment & sustainability
- Social Procurement
- Payment Terms
 - For construction work and supply of related goods and services - in accordance with Security of Payments Act – 20 business days from receipt of claim



Sustainability

Infrastructure Sustainability *"Infrastructure that is designed, constructed and operated to optimise environmental, social and economic outcomes over the long term."* = working smarter and leaving a positive community legacy.

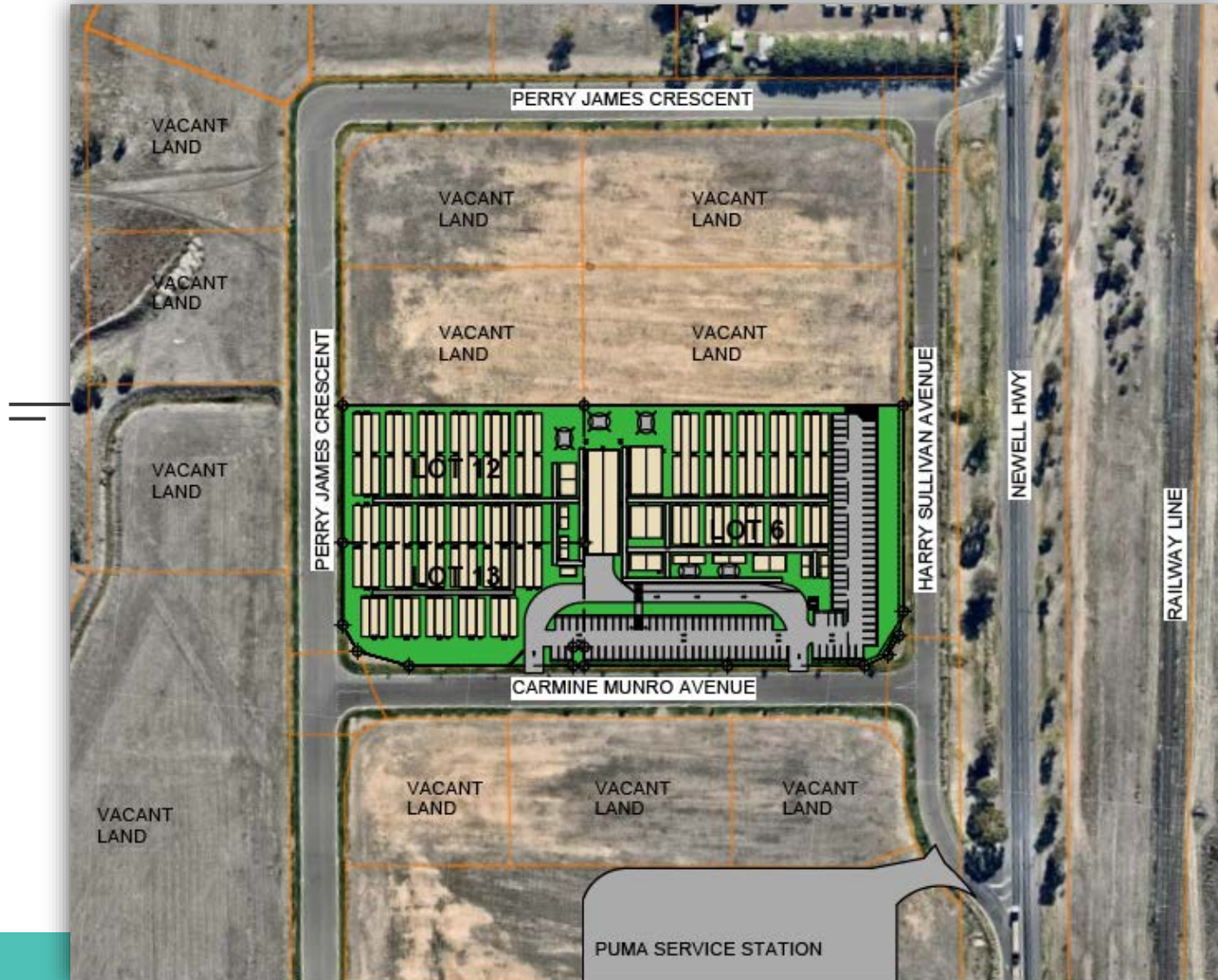
- A criteria used in assessing tenders based on tenderer questionnaire responses
- What are we looking for?
 - Commitment to work sustainably and some ideas on how you will do this
 - Local employment and supply chains
 - Reduce energy use
 - Reduce waste
 - Reduce water
 - Accurate reporting



Accommodation facility



Housing and Accommodation



Temporary workers facility – to be established for approximately 350 people.

The facility **reduces negative** impact on the community by overuse of local accommodation and minimises the negative socio-economic impacts of having a sudden influx of workers (spikes in rental costs and housing availability, fluctuating demand for local commodities, etc)

No shops or bars located within the village results in workers supporting local businesses

Carmine Munro Avenue provides the single point of entry and exit

Most of the workers will be bused to and from the work site

No residential interface

Local jobs – employ local people for village operation

One controlled location

Proposed site facilities and layout



- Administration Office
- Central dining room
- Recreation room and gymnasium
- First aid facilities
- Landscaping
- Carparking and bus set down areas

Beyond the Track



Beyond the Track

Beyond the Track is our commitment in delivering a long-lasting legacy beyond the rail line which will generate meaningful and lasting benefits for all the communities along the N2NS rail corridor.

- **Local grant scheme**
- **Project assets for the community**
- **Indigenous Youth Health and Wellbeing Program**

Onboarding and inductions will inform all team members of our objectives and initiatives, as well as help each of us understand how we can personally contribute to delivering a lasting legacy.

a legacy beyond
the rail line



Thank you!

 1800 732 761

 Community@t4mr.com.au

 199 Balo Street, Moree

TRANS**.M**
RAIL 