

INLAND
RAIL

ARTC



BENALLA

—
PROJECT
REFERENCE
GUIDE

INLAND RAIL IN BENALLA

Inland Rail is a project of national significance dedicated to getting more freight on rail, delivering jobs and supporting Australia's economic growth. ARTC has been appointed by the Commonwealth Government to deliver the Inland Rail Project. We are working with communities along the rail corridor to help with the development of the project's design and delivery.

WHAT IS INLAND RAIL?

Inland Rail is a fast freight backbone from Melbourne to Brisbane that will transform how we move goods around Australia, with a direct rail transit time of less than 24 hours between these cities. It will better link businesses, farmers and producers to national and global markets, and generate new opportunities for industries and regions.

Tottenham to Albury is one of 13 projects that complete Inland Rail. This project is planned along 305km of existing rail corridor from metropolitan Melbourne to the Victoria-NSW border at Albury-Wodonga. The project requires increased clearances along the rail corridor to provide sufficient height and width to support the safe running of double-stacked freight trains 1,800 metres long to be run on the track.

The first stage (north of Beveridge of the project) to be delivered includes modifications to 12 sites along the North East rail line from Beveridge to Albury. Benalla Station Precinct in Benalla is one of 12 project sites located along Victoria's North East Rail Line.

This site needs modifications to provide the clearances required to enable the safe passage of double-stacked freight trains. Taller freight trains need 7.1m in vertical clearance and approximately 4.5m of horizontal clearance to safely run on the track.

WHAT'S HAPPENED IN BENALLA SO FAR?

Since 2018, we have worked with the community, Benalla Working Group, Benalla Rural City Council, V/Line and other stakeholders to investigate several options to support the safe passageway of double-stacked trains through Benalla.

After reviewing valuable feedback from our stakeholders, we are considering the following two options:

- 1. Bridge replacement over the rail line further north of the station building:** The replacement bridge will be higher and likely to require new batters and/or retaining walls. The old bridge would be demolished once the new bridge is completed. This option has the advantage of maintaining vehicle accessibility, including for buses, to Benalla Station and is aligned with feedback, requirements and expectations from stakeholders including V/Line and Benalla Rural City Council.
- 2. New platform, track realignment and upgrade pedestrian access at Benalla station:** This option may improve access to the station, including direct pedestrian access to the station building. Removal of the standard gauge line would improve pedestrian and vehicle conductivity and improve visibility of the commercial precinct from the station. The pedestrian underpass will also be improved to enhance safety and access. After the works are completed, the existing bridge would be demolished.

Options we have discounted include:

- ▶ **Level crossing:** it does not meet government requirements (Level Crossing Removal Authority and ARTC policy)
- ▶ **Track lower:** flooding would create unavoidable issues at this site.

YOU'VE TOLD US WHAT'S IMPORTANT TO YOU

Safety and accessibility:

- ▶ Safety of patrons and pedestrians using the station area, particularly with cars and buses turning outside the station building.
- ▶ Access to the station needs to be accessible for all patrons, including disability access.
- ▶ The existing pedestrian underpass is dark, narrow and does not feel safe to move through.
- ▶ The vehicle bridge leading to the station is steep and has poor sightlines, particularly when driving to the top of the bridge and exiting onto Mackellar Street.

Heritage and amenity:

- ▶ The Benalla station building has significant heritage value and forms part of the heritage character of Benalla.
- ▶ The existing vehicle overpass between Mackellar Street and the station is unappealing and detracts from the precinct's visual amenity.
- ▶ Provide a more visually attractive station precinct connecting both sides of the railway.

WHAT'S NEXT FOR BENALLA?

PLANNING SCHEME AMENDMENT

We're continuing consultation and engagement with the community, Benalla Working Group, and other stakeholders over the coming months. A key part of this process for the first half of 2021 relates to the proposed Planning Scheme Amendment for local government areas including in Benalla.

We are requesting the Minister for Planning amend the Planning Scheme for Benalla Rural City. We sent letters, submission forms and information to thousands of households in April to provide property owners, business owners and other stakeholders with an opportunity to submit any feedback on the proposed amendments by **17 May, 2021**.



HAVE YOUR SAY ON INLAND RAIL IN BENALLA

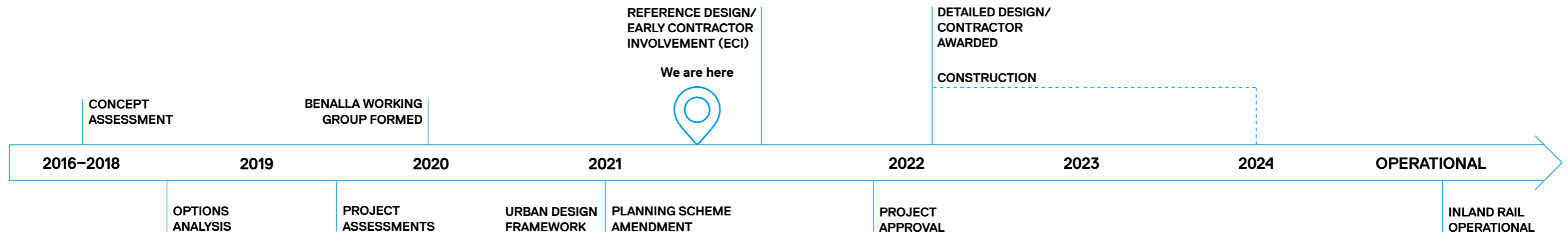
We are seeking submissions on our proposed Planning Scheme Amendment application from **19 April to 17 May, 2021**. This will include the two proposed options for the Benalla Station Precinct.

Visit inlandrail.artc.com.au/t2a-status to make a submission and find out more. See back cover for more ways to share your views and ideas.



Aerial view of Benalla Station Approach Road

KEY STEPS TO DELIVER INLAND RAIL IN BENALLA



REFERENCE DESIGN (2020-2021)

ARTC is currently in the **reference design** phase in Benalla. The purpose of this phase is to hear from the community and understand key elements for consideration in the development and confirmation of the project scope. This phase takes into consideration key inputs such as the Urban Design Framework and our application for a Planning Scheme Amendment.

PROJECT ASSESSMENT (2019-2021)

Across all 12 T2A sites, we have and continue to complete extensive field studies to gain an understanding of the environmental features, technical challenges and opportunities for each site.

These studies, combined with feedback from landowners, neighbours and the North East communities continues to assist us in the development of our approval documentation.

BENALLA WORKING GROUP FORMED (2020)

We are actively engaging with the Benalla Working Group (established in September 2020) to review the proposed designs and better understand the needs of the community.

The purpose of the Working Group is to:

- ▶ facilitate broader community involvement in the project
- ▶ capture local knowledge, issues, concerns, and opportunities
- ▶ increase project understanding and awareness
- ▶ provide input into the design process.

All members of the Benalla community were invited to apply for Working Group membership.

The Working Group is independently chaired by local resident Cath Botta who was selected through an application process. The minutes and presentation slides are all published on our website at inlandrail.artc.com.au/benalla-working-group

URBAN DESIGN FRAMEWORK (2020-2021)

Urban design brings a strategic approach to how our towns and cities are planned and developed. Within the Inland Rail Tottenham to Albury project, urban design seeks to balance the functional requirements of the project with facilitating outcomes that are consistent with town and precinct planning aspirations.

The framework outlines the overall vision and principles of the project, alongside specific objectives for each impacted community, including Benalla.

Consultation is a key element in the development of urban design. We started consultation on urban design in Benalla in November 2020 with workshops with both the Benalla Working Group and Council.

To ensure community support for the strategic vision and subsequent Inland Rail project detailed design, consultation with stakeholders and incorporation of their feedback throughout the process is essential.

We ran five community information sessions in March for the Benalla community and provided opportunities for feedback via an online survey.

PLANNING SCHEME AMENDMENT (2021)

We're currently focused on the proposed Planning Scheme Amendment, which incorporates site-specific controls via an Incorporated Document.

This means the project can progress without the need for additional planning permits, as long as conditions of the Incorporated Document are met to the satisfaction of the Minister for Planning or other relevant authority.

EARLY CONTRACTOR INVOLVEMENT (ECI) (2020-2021)

A key part of our delivery strategy is the Early Contractor Involvement (ECI) process. In Benalla, this will take place later in 2021.

As part of this process, contractors are engaged to review our plans and suggest engineering, construction and cost delivery options to ensure delivery will align with federal and state approvals, incorporate community feedback into the design where possible and meet budget and schedule requirements.

DETAILED DESIGN/ CONTRACTOR AWARDED (2021-2023)

Produce detailed design to be provided for further community discussion, feedback, and refinement.

Detailed design prepared by construction contractor to define specifics like car parking location, lighting, walkway locations and landscaping. Produce detailed design to be provided for further community discussion, feedback, and refinement.

Detailed design prepared by construction contractor to define specifics like car parking location, lighting, walkway locations and landscaping.

LEARN MORE

See our design option **fact sheet** on our website for detail on each option, and this detail was also presented to Benalla Working Group in 2019 which is available online in the minutes for public access at inlandrail.artc.com.au/benalla-working-group

LEARN MORE

A dedicated page for the Benalla Working Group is available on the Inland Rail website, with all meetings and presentations available for public access at inlandrail.artc.com.au/benalla-working-group

HAVE YOUR SAY

We are seeking submissions on our proposed Planning Scheme Amendment application from **19 April to 17 May, 2021**. Visit inlandrail.artc.com.au/t2a-status to make a submission and find out more.

LEARN MORE

Our urban design framework fact sheet is available on the Inland Rail website at inlandrail.artc.com.au/urban-design-framework

HAVE YOUR SAY

The ECI work will result in reference designs being developed and supporting visualisations will be produced to assist in the interpretation of the reference design. These designs will be available to the community in late 2021 for comment and feedback.

HAVE YOUR SAY

The detailed designs will be presented to the Benalla Community for feedback. We will work closely with the community and stakeholders throughout the ECI and D&C process to ensure community feedback is incorporated into the final designs wherever possible.

LEARN MORE

Further information and a **fact sheet** on our management of Noise and Vibration are available on the Inland Rail website at inlandrail.artc.com.au/managing-noise-and-vibration

MEET THE STAKEHOLDER TEAM



ANGELINE DANIELS – STAKEHOLDER ENGAGEMENT LEAD

Angeline lives in Benalla and leads stakeholder engagement in Benalla, Glenrowan and Wangaratta. She has a background working with regional communities in road safety programs as well as major road infrastructure projects. Angeline is committed to authentic public participation in infrastructure projects and ensuring community and stakeholder feedback is reflected in project designs wherever possible.



CARRIE DONALDSON – STAKEHOLDER ENGAGEMENT ADVISOR

Carrie grew up in the Goulburn Valley and is based in the North East in the small locality of Molka. She has a background in community-based projects, sustainable tourism development and working across multi-tiered government projects. She's very familiar with the communities across the region that Inland Rail will pass through.

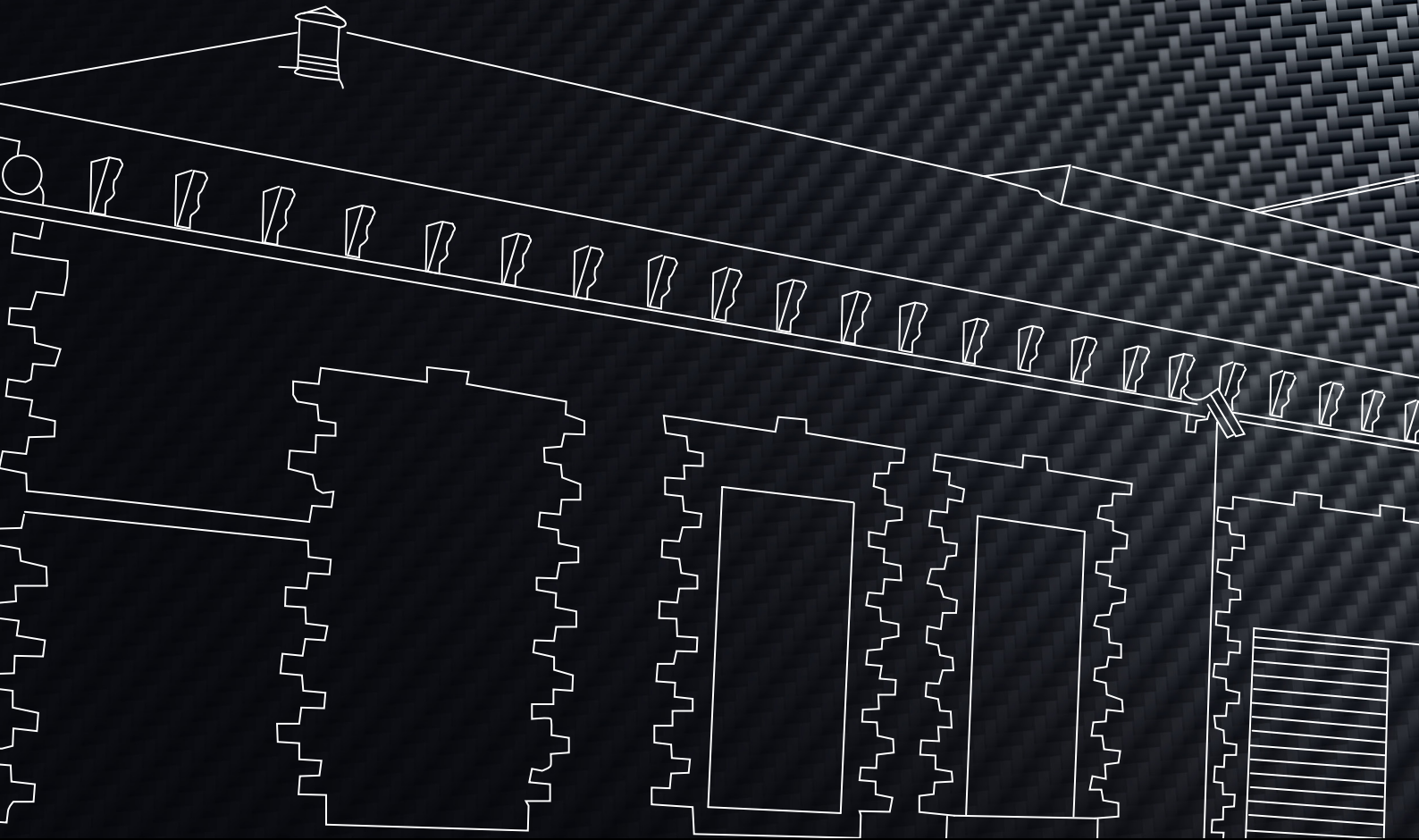
Carrie is dedicated to providing timely project information to stakeholders and community members, maintaining a two-way dialogue ensuring stakeholder and community views, feedback or concerns are heard and considered by the project team throughout the project.



Aerial view of Benalla Station and Benalla Station Approach Road



Aerial view of Benalla Station Precinct and surrounds



Artist impression of Benalla Railway Station historical building, Benalla



HAVE YOUR SAY ON THE DESIGN OF THE BENALLA RAIL UPGRADE

In April and May 2021 we'll be seeking your feedback on our proposed Planning Scheme Amendment, which includes Benalla Rural City.

Email victoriaprojects@artc.com.au

Drop by every **Monday and Thursday at 50 Nunn Street, Benalla (10am - 3pm)**

Visit inlandrail.artc.com.au/events for more information.

LEARN MORE

The Tottenham to Albury website is a comprehensive resource where we publish regular project updates, documents such as fact sheets and working group minutes, and is where you will find the interactive map.


Check out some recently updated fact sheets:

- inlandrail.artc.com.au/managing-noise-and-vibration-fact-sheet
- inlandrail.artc.com.au/urban-design-framework
- [inlandrail.artc.com.au/flora fauna vic](http://inlandrail.artc.com.au/flora-fauna-vic)
- [inlandrail.artc.com.au/aboriginal-cultural-heritage vic](http://inlandrail.artc.com.au/aboriginal-cultural-heritage-vic)
- inlandrail.artc.com.au/vic-land-access
- inlandrail.artc.com.au/planning-scheme-amendment

For more information on the latest approvals processes for the project, visit inlandrail.artc.com.au/t2a-status

WANT TO KNOW MORE?

ARTC is committed to working with communities and landowners, state and local government as a vital part of our planning and consultation work, and we value your input. If you have any questions or comments, please let us know.

 **1800 732 761**

 **victoriaprojects@artc.com.au**

 **inlandrail.artc.com.au/t2a**

ARTC

The Australian Government is delivering Inland Rail through the Australian Rail Track Corporation (ARTC), in partnership with the private sector.