

INLAND RAIL TOTTENHAM TO ALBURY AND NORTH EAST RAIL LINE UPGRADE

JULY 2021 NEWSLETTER

VIC

The Australian Rail Track Corporation plans, builds and maintains the tracks Australian trains run on and we're working hard to bring more of the benefits of rail to more people.

In Victoria, we're working in communities to improve freight and passenger services along the North East rail line.

TOTTENHAM TO ALBURY INLAND RAIL

The Victorian section of Inland Rail is continuing to progress required planning and environmental approvals. Feedback from the community and other stakeholders is essential at this stage of the project.

Over the last 12 months we've gathered views on reference designs, Urban Design Frameworks and Planning Scheme Amendment documentation. As we move toward the start of construction at some sites, there are many more ways coming up to have your say.

INLAND RAIL ACTIVITY BOLSTERS LOCAL ECONOMIES

ARTC has spent more than \$30,000 with local businesses across North East Victoria in the last six months, as our project team expands its presence in local communities.

Whether it's ordering printing, catering, renting shopfront space, hiring venues for information sessions or purchasing goods and services, we're proud to be supporting local communities.

We're also continuing to hold valuable conversations with residents and other stakeholders across impacted communities.

So far in 2021, we've held 16 sessions and had more than 480 conversations across Mitchell Shire at locations including Broadford's Living and Learning Centre and outdoors on Power Street, in Wandong, and at the Seymour Alternative Farming Expo.

Further up in North East Victoria, we've chatted to more than 200 locals at our shops on Binney Street, Euroa and Nunn Street, Benalla, at a marquee in Glenrowan's Lion's Park and in a kiosk on Murray Street in Wangaratta.

Our next rounds of engagement will focus on heritage permits for Glenrowan and Wangaratta, and after that we'll be seeking community feedback on our Environment Report.



Seymour Alternative Farming Expo

BENALLA WORKING GROUP UPDATE

The latest Benalla Working Group meeting was held on 17 June 2021. Ten of the 12 local community representatives attended, including Benalla Rural City Councillor Justin King.

During the meeting, members reviewed draft concept visualisations and provide feedback that can be incorporated in draft designs for the two options under consideration in Benalla – a new bridge or track realignment.

Members also received an update on the Planning Scheme Amendment (PSA) process. ARTC advised that Benalla was one of the most proactive communities along the alignment in Victoria, with 30 per cent of all PSA submissions coming from Benalla residents.

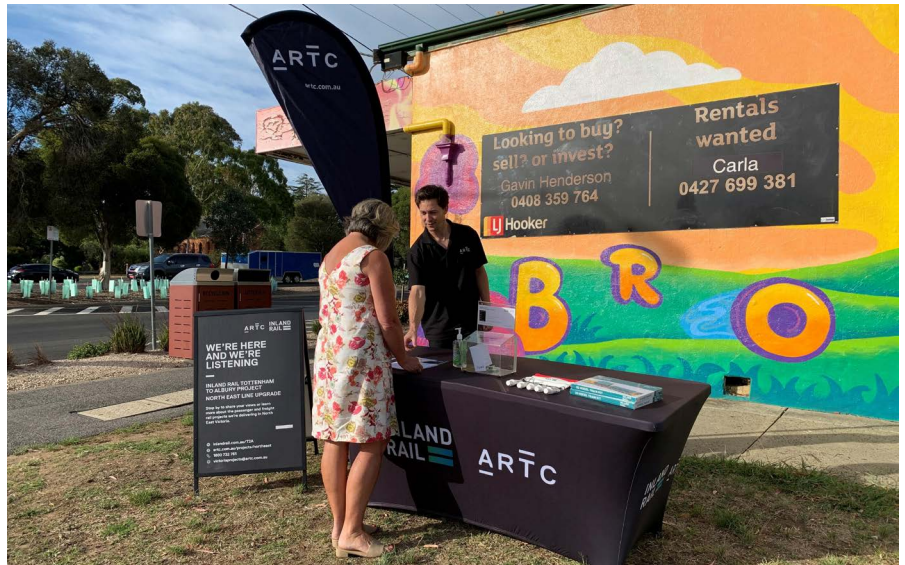
EUROA STAKEHOLDER GROUP FORMED

In order to support the timely and detailed consideration of options available to us in Euroa, ARTC has recently formed the Euroa Stakeholder Group (ESG).

The ESG includes members from Strathbogie Shire Council and the Department of Transport. The ESG is committed to keeping the community informed on the Inland Rail project in Victoria.

The group's key objective is to examine, confirm and communicate the technical requirements for any potential solutions to deliver Inland Rail at the Euroa Station Precinct. The Anderson Street bridge is part of the arterial road network and its connecting road infrastructure are assets owned by the Department of Transport.

The first meeting was held on 8 April 2021 and included confirmation of a rail precinct redevelopment approach for any design solution in Euroa.



Power Street, Broadford

PLANNING SCHEME AMENDMENT

We thank locals across North East Victorian communities for their submissions and interest during our voluntary Planning Scheme Amendment (PSA) public exhibition from 19 April to 17 May 2021.

As part of our ongoing consultation process, we held a series of information sessions in May 2021 to explain the PSA process. We received more than 200 submissions and have been responding to questions where required. All submissions, and our responses, will be included in our PSA application to the Minister for Planning, who will determine the outcome in coming months.

BEACONSFIELD PARADE BRIDGE VISUALISATION

More than 40 locals had a first look at the new bridge proposed to replace Glenrowan's existing Beaconsfield Parade bridge at a recent information session.

Attendee feedback was supportive of the proposed open span-bridge design, which respects the historic town's existing heritage sites including Ann Jones Inn and the Station Master's House.

Importantly, the community can still provide feedback on the bridge's design as we transition through the project's approvals phase in Victoria and into construction.

This proposed design will be included in the project's Heritage Permit application for the Glenrowan Heritage Precinct. Heritage Victoria will be seeking community feedback on our application in the coming weeks, and we'll share more details soon.



Visualisation of proposed new Beaconsfield Parade bridge at Glenrowan



Matthew Hart meeting with representatives from the Border Rail Action Group

A JOB WELL DONE

Congratulations are in order, according to Border Rail Action Group (BRAG), for the high-quality completion of the North East Rail Line Upgrade track works.

“We met with BRAG in early 2020 due to their high level of interest in the project and it was a pleasure to meet again, now that all the track upgrades are completed, to show how much has been achieved in just over 12 months,” ARTC’s Project Director Matthew Hart said.

Numerous before and after photos of bridges, level crossings, turnouts and trackside drainage helped tell the project’s story, many of which can be seen on the interactive map on the project’s website.

NORTH EAST RAIL LINE UPGRADE

Track works for the North East Rail Line Upgrade were completed ahead of schedule earlier this year and signalling works are continuing. Feedback on the upgrade from our customers and train passengers alike has been extremely positive, in terms of improved reliability and ride comfort.

The performance of passenger trains along the North East line has dramatically improved since before the commencement of the upgrade, with results for on-time running of services being better than they have been in many years.

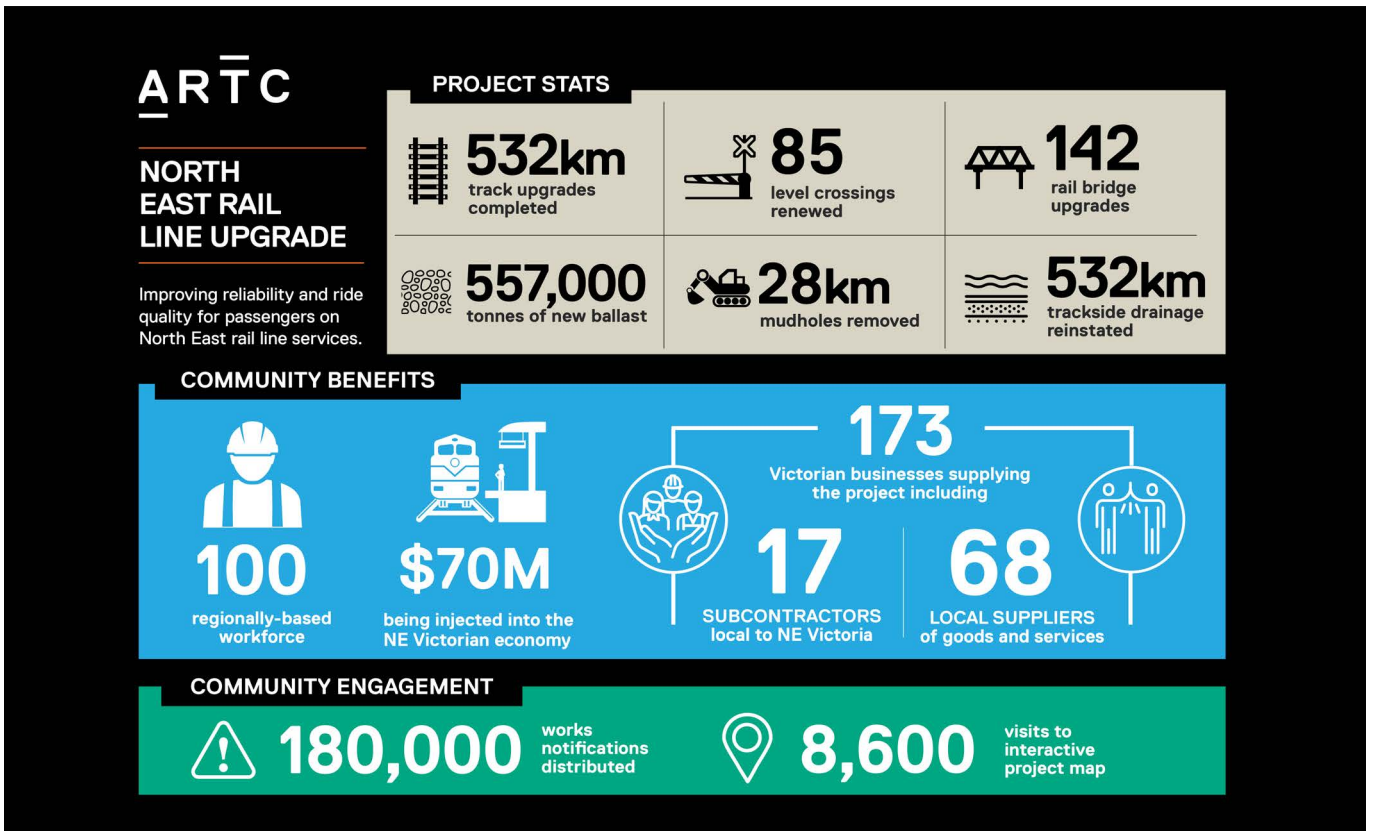
Currently the line has no track related temporary speed restrictions (TSRs), even after heavy rains experienced throughout the region in June. Whilst ongoing maintenance will always be required to keep tracks in good condition, the resilience the track upgrades are showing is very encouraging.

“ I’ve noticed the line is much smoother.

In layman’s terms all the clunks have gone out of the running gear and it certainly improves the environment in the carriage.

I’ve noticed a difference, definitely. ”

– Michael, Seymour resident



With track works for the upgrade complete see just what has been achieved for both the track and communities of North East Victoria in our project snapshot



Inland Rail Tottenham to Albury project team participating in a smoking ceremony in Seymour

IN THE COMMUNITY

PROJECT TEAM GAINS INSIGHT INTO LOCAL INDIGENOUS CULTURE

The Taungurung Land and Waters Council Aboriginal Corporation shared brilliant knowledge and stories about their rich culture with ARTC's Inland Rail project team in Victoria, during a captivating presentation to recognise NAIDOC Week.

Natural Resource Management Supervisor Shane Monk explained the significance of Aboriginal artefacts he had found and made to the 30-strong group visiting Seymour.

The Tottenham to Albury project has been working with several Registered Aboriginal Parties, including Taungurung and Yorta Yorta, to establish Cultural Heritage Management Plans where project areas are within land managed by these parties in Victoria.

HELPING BRING SCULPTURE EXHIBITION TO LIFE IN KILMORE

The Kilmore Art Expo's new sculpture exhibition was 'the perfect match' to receive a grant as part of ARTC Inland Rail's Community Sponsorships and Donations program.

The art expo, which was open April 16–18 April at Kilmore Memorial Hall, drew hundreds of patrons eager to view the event's paintings, photography and newly-added sculptures. Kilmore Art Expo Director Andrea Willis said the sculpture category leant itself well to the engineering and infrastructure work Inland Rail will complete.

"Sculptural art matches perfectly with the type of work Inland Rail is doing and we're very pleased to have finally been able to open this new exhibition, after cancelling the show due to COVID-19 restrictions last year," Andrea said.



Sculpture featured at the Kilmore Art Expo

The next round of Inland Rail's Community Sponsorships and Donations Program is open from **1 August to 31 October**.

“IT'S GOOD KNOWING THE BENEFITS FROM THE WORK WE'RE DOING FLOWS INTO THE LOCAL COMMUNITY.”

– Hamish, ARTC employee



ARTC

A more reliable rail network
WE'RE WORKING ON IT

WANT TO KNOW MORE?

ARTC is committed to working with communities and landowners, state and local government as a vital part of our planning and consultation work, and we value your input. If you have any questions or comments, please let us know.

☎ **1800 732 761**

✉ **victoriaprojects@artc.com.au**

🌐 **artc.com.au/projects/northeast**

🌐 **inlandrail.com.au/t2a**



The Australian Government is delivering Inland Rail through the Australian Rail Track Corporation (ARTC), in partnership with the private sector.