



**Scenic Rim Community Consultative  
Committee – Draft EIS meeting**

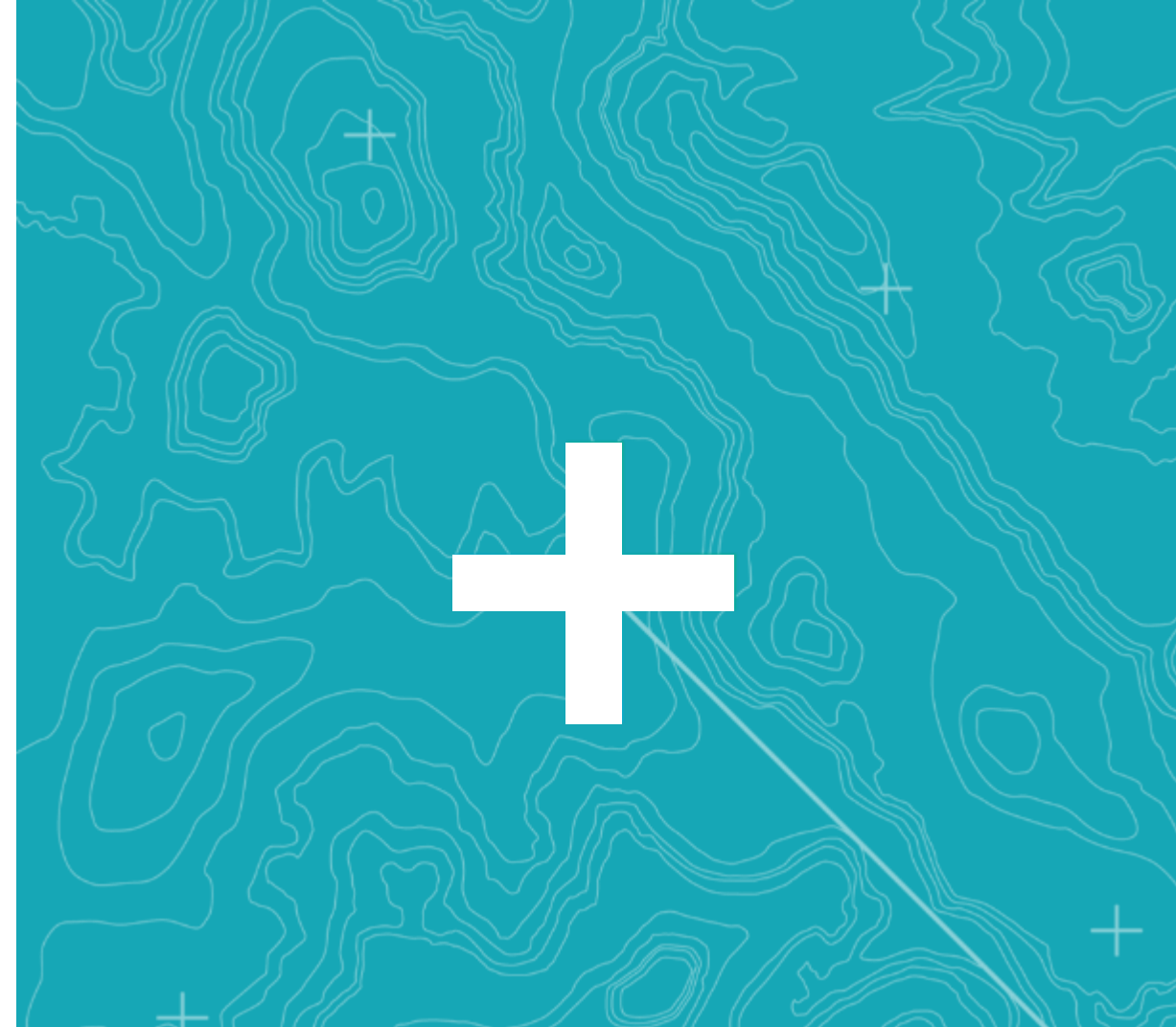
**14 October 2021**

# Scenic Rim CCC Meeting

**Welcome to Country**

**Introductions**

**Conflict of interest**



# Update on previous actions

Please refer print out of previous actions.

# C2K project update

# ABORIGINAL CULTURAL HERITAGE

- The pedestrian Aboriginal Cultural Heritage Surveys are continuing with input from the Traditional Owner (TO) groups.
- This includes TO's on the ground with their technical advisor to determine the extent and importance of any CH located.
- Stone artefact scatters and isolated artefacts are the most common Aboriginal heritage sites followed by scarred trees.
- Identified Aboriginal Cultural Heritage is managed under the provisions of the approved Cultural Heritage Management Plans and can include measures such as avoidance, disturbance minimisation, surface collection and archaeological test-pitting.

# PROTECTING CULTURAL HERITAGE



# **Draft Environmental Impact Statement next steps**

# Draft EIS next steps

## Office of Coordinator General (completed)

- Evaluated all submissions
- Compiled input from Agencies
- Requested additional information 24/9/21

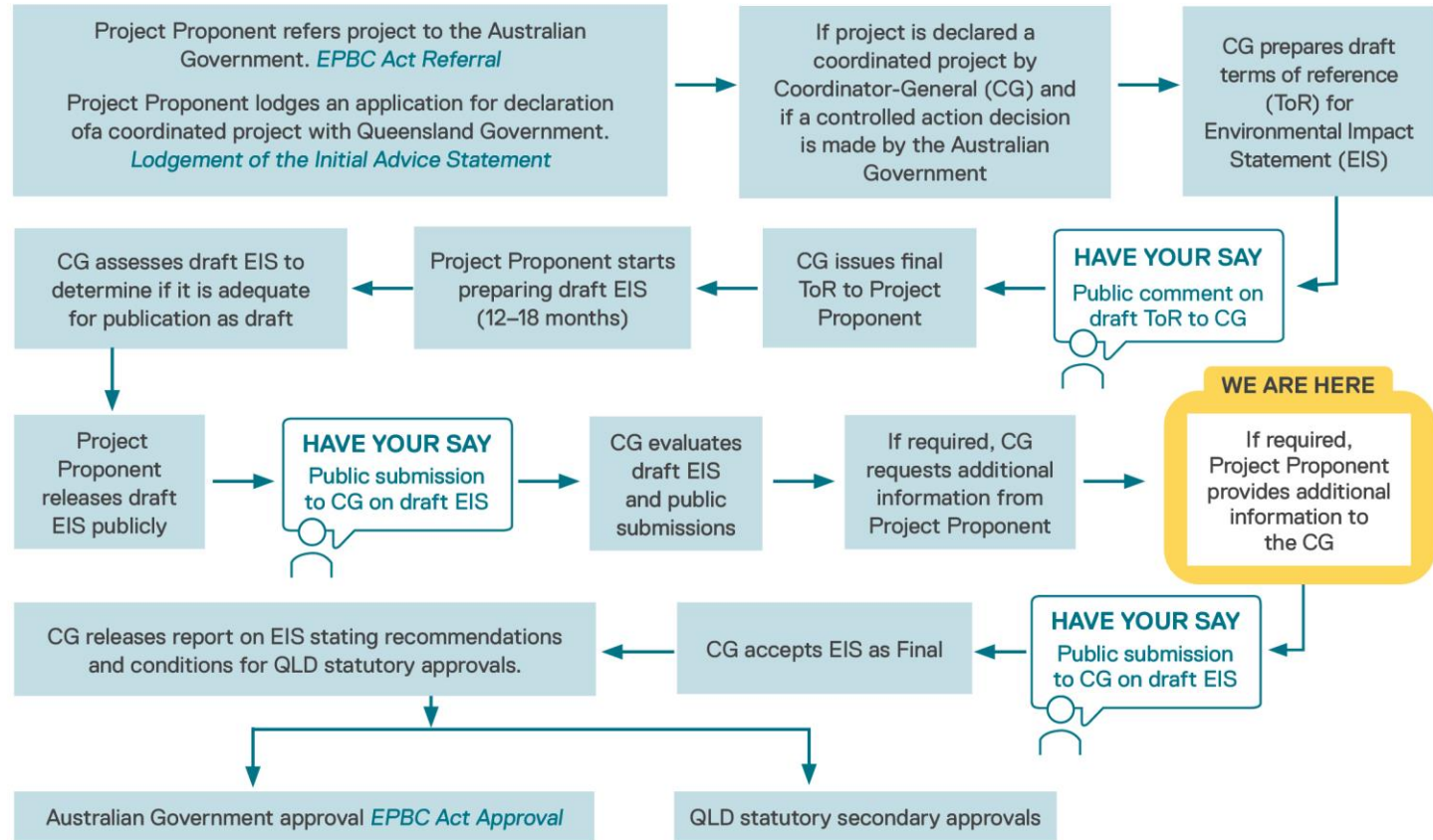
## ARTC

- Continue with technical studies
- Address requested information and submissions
- PPP planning

## Engagement

- Ongoing consultation
- Share Project updates

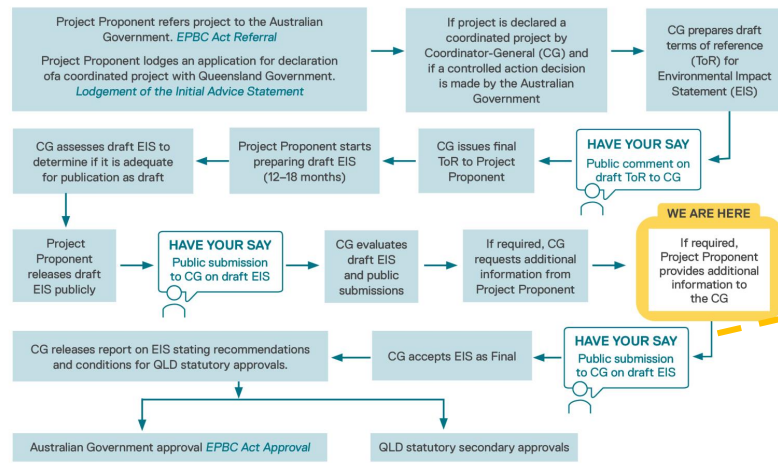
## Approvals process for Calvert to Kagaru project





# DRAFT EIS NEXT STEPS

## Approvals process for Calvert to Kagaru project



- Further work to address CG feedback
- Respond to 846 submissions received
- Draft EIS updated and re-submitted to CG as a *revised draft EIS*
- When *revised draft EIS* is adequate, there will be a second public consultation
- Timing currently being worked through
- Input required following announcement of Preferred Bidder
- Responses to submissions included in the *revised draft EIS*
- Following second public notification, *revised draft EIS* updated as required

# Draft EIS Updates

- The current draft EIS is based on the ARTC Reference Design
- Concept designs received by three bidders and currently being evaluated
- ARTC expects to nominate Preferred Bidder either late 2021 or early 2022

## Revised draft EIS, based on:

- OCG feedback
- Stakeholder feedback
- Preferred Bidder proposals

# OCG request for additional information

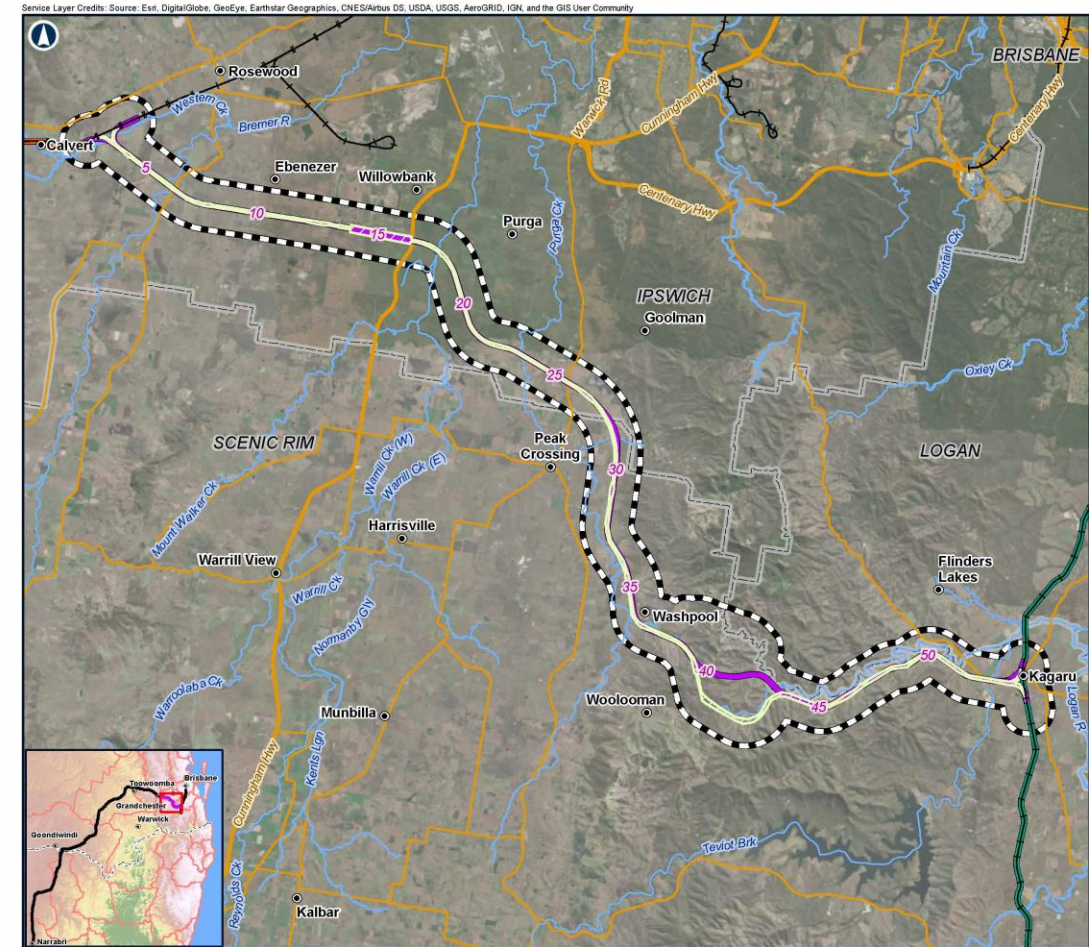
# Project description

## What has the CG requested?

- Detail on Project changes
- Update design drawings

## How is ARTC Inland Rail addressing this?

- Include the project changes and design drawings



# Noise & vibration

## What has the CG requested?

- Review noise assessment, demonstrate compliance with State requirements
- Construction, road traffic, fixed plant, railway operations, maximum impacts

## How is ARTC Inland Rail addressing this?

- Further definition of sensitive receptors
- Predicting noise levels against ARTC trigger levels and State criteria
- Update noise maps
- Where required, refine acoustic mitigation



# Surface water & hydrology (flooding)

## What has the CG requested?

- Respond to all items raised by the *Independent International Panel of experts for Flood Studies in Queensland* in their draft report Feb 2021
- Confirm overland flow and water storage

## How is ARTC Inland Rail addressing this?

- Update flood impact objectives to align with requirements of the *Independent International Panel of experts for Flood Studies*
- Update assessment and mapping for mainstream and local catchments
- Comment on evacuation routes and emergency events
- Further inputs on drainage solutions

# Surface water & construction water

## What has the CG requested?

- Further information on environmentally sensitive locations - watercourses and waterway crossings
- Construction water sources - certainty/reliability

## How is ARTC Inland Rail addressing this?

- Include information from field work - post draft EIS
- Continue monitoring through future Project Phases
- Verify site-specific Water Quality Objectives and ensure ongoing compliance
- Water supply options and transportation, subject to Preferred Bidder



# Social performance

## What has the CG requested?

Additional information on:

- Workforce management
- Housing and accommodation
- Local business and industry procurement

## How is ARTC Inland Rail addressing this?

- Collaborate on social performance planning and implementation
- Update Social Impact Assessment to reflect feedback
- Refine mitigation measures





# Economic impact

## What has the CG requested?

- Update regional economic assessment for labour markets (COVID-19), pandemic-related stimulus and updated capital expenditure
- Potential local business impacts, jobs and employment

## How is ARTC Inland Rail addressing this?

- Revise economic assessment
- Commercial aspects will remain commercial in confidence



# Stakeholder engagement

## What has the CG requested?

- Further information on the level of stakeholder engagement completed to date
- Further engage directly and indirectly impacted stakeholders
- Demonstrate consultation has been undertaken with key stakeholders including Ivory's Rock

## How is ARTC Inland Rail addressing this?

- Update dEIS with further information on stakeholder engagement works
- Communicate design refinements as a result of stakeholder engagement
- Ongoing commitment to engage stakeholders and Ivory's Rock to discuss potential impacts



# Traffic, transport and access

## What has the CG requested?

- Further information on local and state roads, pavement impacts and level crossings with a particular focus on Middle Rd

## How is ARTC Inland Rail addressing this?

- Update traffic impact assessment - routes, volumes and counts
- Re-assess level crossing treatments utilising ALCAM, consideration to proponent designs
- Frequent meetings with Councils on proposed designs and public consultation feedback



# Flora and fauna

## What has the CG requested?

- Revise fauna assessment, reflect recent findings include additional fauna records
- Further updates for koala habitat
- Update ARTC Queensland offset delivery strategy

## How is ARTC Inland Rail addressing this?

- Update based on Department of Agriculture, Water and Environment feedback
- Further detail on habitat as relevant for species, biodiversity corridors, fauna passage and fencing



# Air quality

## What has the CG requested?

- Further comment on coal and construction dust
- Re-confirm sensitive receptors and cumulative emissions

## How is ARTC Inland Rail addressing this?

- Review land uses in Project study area
- Update the air assessment
- Establish a consultation and complaint management process for air quality



# Groundwater

## What has the CG requested?

- Groundwater survey - registered and unregistered bores
- Confirm extent on drawdown for Teviot Range Tunnel
- Discuss process and timing for make good arrangements

## How is ARTC Inland Rail addressing this?

- Update with additional data collected from field work since the current draft EIS release
- Review potential change in impacts to groundwater users
- Review groundwater dependant ecosystems assessment as required



# Land use & tenure

## What has the CG requested?

- Further detail on agricultural land uses
- Information on Environmentally Relevant Activities (ERAs)
- Discuss other approval triggers
- Property changes since the current draft EIS

## How is ARTC Inland Rail addressing this?

- Review against current regional and local planning schemes
- Update existing land uses including ancillary and secondary
- Assess property impacts for each Project phase
- Consultation regarding property changes



# Land resources

## What has the CG requested?

- Further detail on topography, geology and soils

## How is ARTC Inland Rail addressing this?

- Soil survey to be undertaken by a Certified Professional Soil Scientist
- Findings used to update management and mitigation measures
- Include geotechnical data in the revised dEIS
- Update contaminated land risk assessment to describe measures to avoid, minimise and mitigate contamination.





# Other items to address in the revised draft EIS

- Sustainability commitments
- Hazard and risk (e.g. bushfire and railway safety)
- Waste and resources (e.g. spoil management)
- Environmental Management Plans (more detail)
- Update ARTC's commitments to reflect the OCG's request for additional information



# Stakeholder engagement and communications

- Address OCG Request For Information with:
  - OCG
  - *Local and state government bodies*
- Review and respond to submissions regarding stakeholder engagement
- Update draft EIS on up-to-date engagement activities
- Communicate OCG feedback to stakeholders
- Monthly stakeholder engagement report

On-going consultation with stakeholders throughout the revised draft EIS process



# General business

- Vote – request for Ipswich to be included in CCC name
- Donation – Peak Crossing Hall windows
- Sponsorships and Donations – next round closes 31 October 2021  
<https://inlandrail.artc.com.au/opportunities/sponsorships-and-donations/>
- Ideas for further community engagement
- Proposed date for next CCC meeting Thursday 9 December in Boonah

# Observer questions?

# Confirmation of Actions & Conclusion

**INLAND  
RAIL** 

**Thank you**

**ARTC**

The Australian Government is delivering  
Inland Rail through the Australian Rail Track  
Corporation (ARTC), in partnership with the  
private sector.