



INLAND RAIL

COMMUNITY CONSULTATIVE COMMITTEE

Illabo to Stockinbingal

30 September 2021

Acknowledgment of Country

Inland Rail acknowledges the Traditional Custodians of the land on which we work, and pay our respects to Elders past, present and emerging.

PRESENTATION OVERVIEW

- + Project Update
Melvyn Maylin (Project Director)
- + Technical Update
Thomas Whiteley (Design Engineer)
- + Stakeholder and engagement update
Heath Martin (Stakeholder Engagement Manager)
- + Environmental Impact Statement Update
Kirsten Velthuis (I2S Senior Environmental Advisor)
- + Questions

ILLABO TO STOCKINBINGAL PROJECT UPDATE

Melvyn Maylin

Project Director

I2S PROJECT UPDATE

Activity since June CCC meeting:

1. 100% Reference Design consultation completed
2. Continued development of Environmental Impact Statement
3. Updated letters to landowners on Voluntary Property Acquisition

CURRENT STATUS

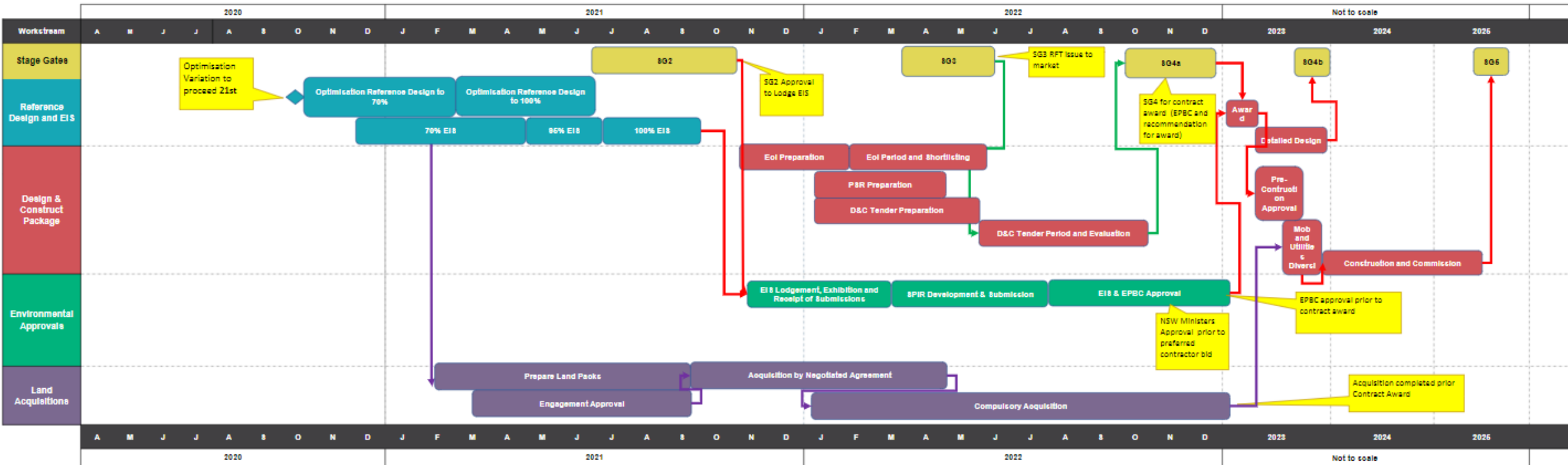
- + Reference design completed
- + Environmental Impact Statement in final internal review
- + Letters to landowners discussing voluntary property acquisition
- + Formal acquisition process starts after Ministerial approval

WHAT NEXT

Activity	Date
Voluntary Property Acquisition Discussions	Second half 2021
Environmental Impact Statement (EIS) lodgement	November 2021
EIS Public Exhibition	February 2022
EIS Approval	Early 2023
Award Design and Construct (D&C) Contract	Mid 2023

I2S HIGH LEVEL SCHEDULE

I2S High Level Schedule




Technical Update

Tom Whiteley



TECHNICAL UPDATE

Completed activities since June 2021

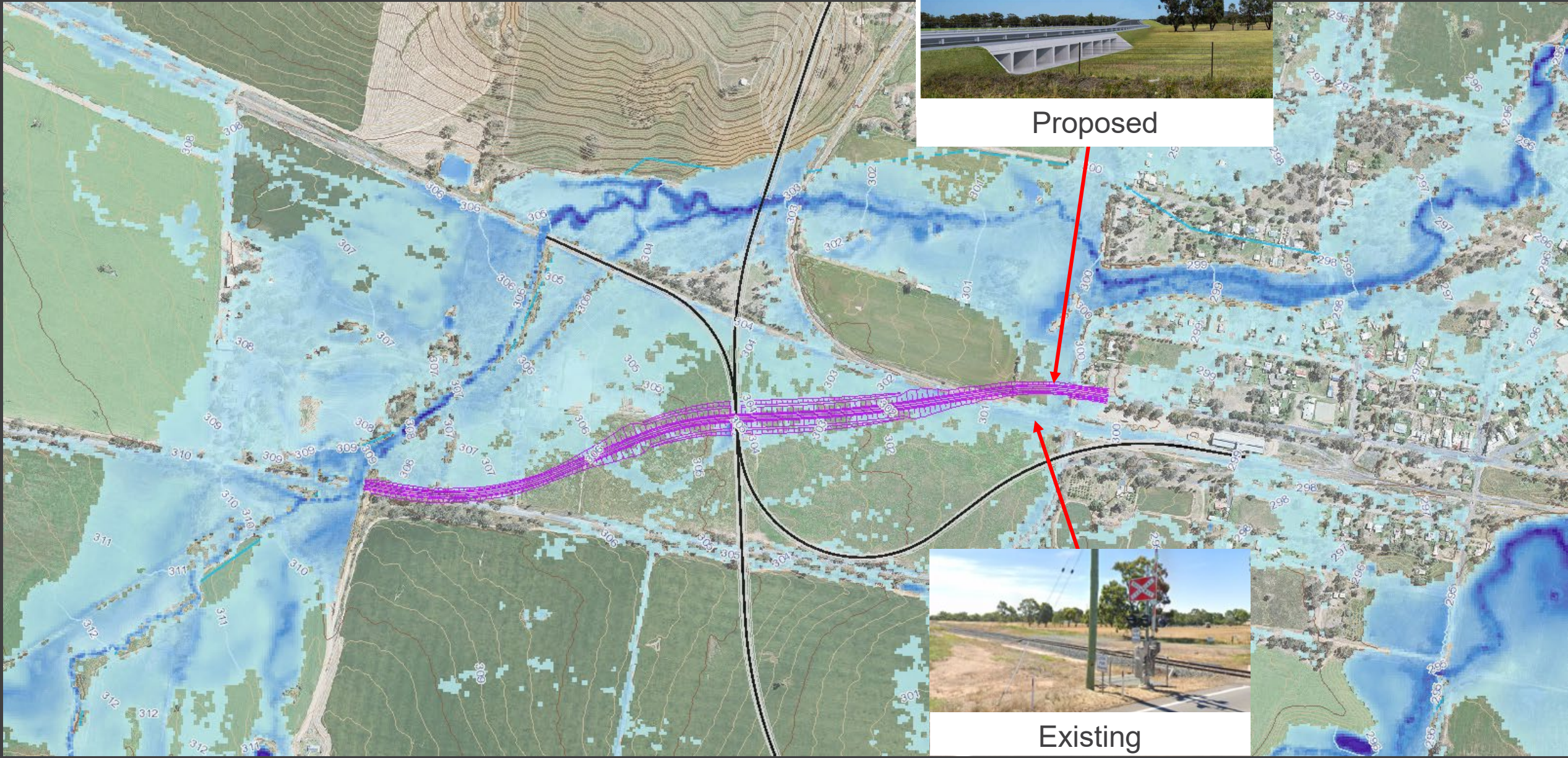
- + 100% Reference Design Complete
 -  5 min overview of alignment using Social Pinpoint

Actions from June 2021 CCC meeting

- + Provide an update on drainage design at the proposed Burley Griffin Way overpass

****Feel free to ask questions throughout****

TECHNICAL UPDATE





Stakeholder Engagement Update
Heath Martin

STAKEHOLDER ENGAGEMENT UPDATE

Completed engagement activities since June 2021

- + CCC held in June at Cootamundra
- + Completed 100% Reference Design engagement
 - + Main concerns:
 - + Access, acquisition and compensation, noise and vibration, biosecurity and construction timeframes
- + Landowners sent update letter about voluntary acquisition and introductory letter for voluntary negotiations
- + Upcoming letter for landowners: Letter providing the Land Acquisition Package which will include hydrology and noise information (to be sent to landowners this week)

ENGAGEMENT AND CONSULTATION NEXT STEPS

Indicative timing:

- + Continued engagement with landowners about property acquisition
- + Early 2022: exhibition of EIS. Consult on EIS exhibition and how to make submissions
 - + Includes public drop in sessions
- + Ongoing scheduled Community Consultative Committee (CCC) meetings



Inland Rail at the Coatomundra Show, 2019

PROPERTY ACQUISITION

- + Acquisition activity in NSW is covered under the *Land Acquisition (Just Terms Compensation) Act 1991* (Just Terms Act).
- + Ultimately the NSW Government (via Transport for NSW (TfNSW)) will own the land which is needed for I2S. In some cases, TfNSW will acquire the land directly from landowners. Through a protocol, ARTC are appointed as representative of TfNSW in this instance.
- + TfNSW has its own processes including approval from the Minister for Regional Transport and Roads.
- + ARTC is able to acquire land directly, ahead of the TfNSW processes, in order to expedite acquisitions and so make it easier for landowners. We refer to this as a “voluntary acquisition” process.
- + Correspondence introducing this voluntary acquisition process was sent to all landowners in August – initially an **update letter** and later an **introductory letter for voluntary negotiations** which included maps and areas of permanent and temporary (for construction purposes) acquisition.
- + Voluntary negotiations are exactly that – voluntary - there is no obligation to commence this process and landowners can withdraw at any time.
- + The voluntary process is in line with the compensation scheme in the Just Terms Act.
- + Next step: Land Acquisition Packages are being provided to all landowners in late September. These include additional information enabling an informed process to commence.
- + An Acquisition Manager and Personal Manager are assigned to each landowner to ensure a consistent and equitable approach.

Environmental Impact Statement Update

Kirsten Velthuis

Senior Environmental Advisor

EIS STATUS UPDATE

EIA status:

- + ARTC is currently finalising the draft 100% EIS
- + ARTC will submit the draft 100% EIS for adequacy review to Department of Planning, Industry and Environment (DPIE) in Nov 2021
- + Adequacy review is a DPIE check that the EIS addresses the Secretary's Environmental Assessment Requirements (SEARs) and is adequate to go on public exhibition

Public Exhibition:

- + After the adequacy review process, the EIS will be put on public exhibition
- + Public exhibition will be for at least 28 days- Q1 2022
- + The public is invited to make comments/ submissions

EIS PUBLIC NOTIFICATION

DPIE will advise:

- + In newspapers that the EIS is on display
- + Locations for the public to view the EIS
- + DPIE will confirm whether the EIS is to be printed as well as digital version
- + How to make a submission

Inland Rail will:

- + Develop and provide a printed Summary of EIA Findings
- + Hold community information sessions
- + Speak with landowners and stakeholders regarding content in the EIS
- + Provide guidance on how to make submissions

EIS PUBLIC NOTIFICATION

Inland Rail communication:

- + Letters to directly impacted landholders
- + Letters to community within project area
- + Email to stakeholders
- + Inland Rail website update
- + Social media post
- + Online interactive map update
- + Phone number for low literacy or people with English as a second language
- + Notification through council's website and social media
- + Information sessions
- + Podcast on hot topics

HOW TO MAKE A SUBMISSION

Online:

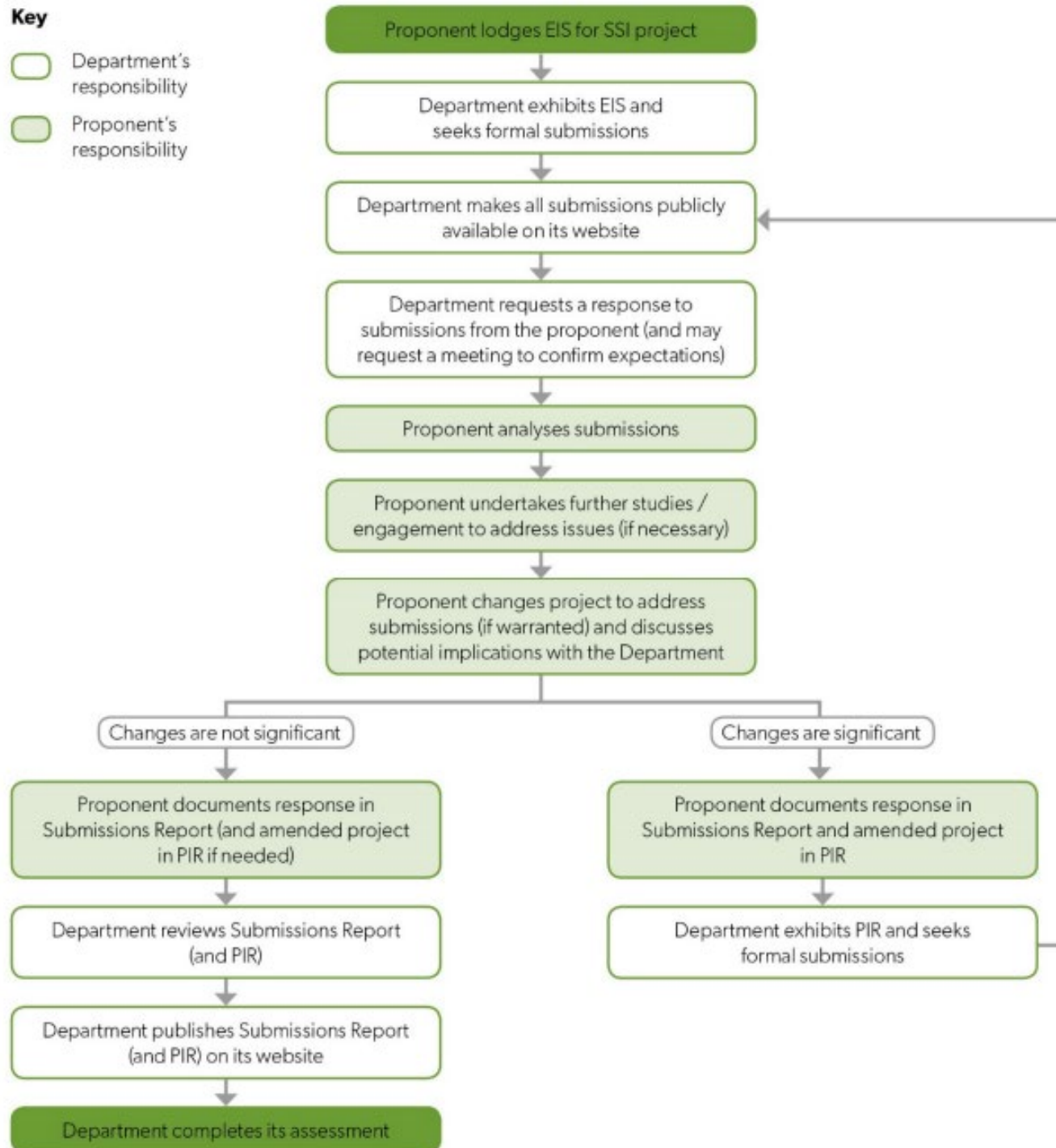
- + At DPIE's Major Project website: www.planningportal.nsw.gov.au/major-projects/have-your-say
- + Set up an account on DPIE's Major Project page
- + Go the Illabo to Stockinbingal Project on DPIE's Major Project page and click 'Make Submission'

By post:

- + Post a physical copy of your submission to DPIE
- + Address the submission to the nominated contact person or team listed on the Project's page (DPIE will confirm the addressee at the time):
 - + Katherine Klouda
Planning and Assessment, Department of Planning, Industry and Environment
Locked Bag 5022, Parramatta NSW 2124

Submissions can be made during the public exhibition period only

WHAT HAPPENS AFTER SUBMISSIONS



**INLAND
RAIL** 

ARTC

The Australian Government is delivering Inland Rail through the Australian Rail Track Corporation (ARTC), in partnership with the private sector.

Questions?

**INLAND
RAIL** 

ARTC

The Australian Government is delivering Inland Rail through the Australian Rail Track Corporation (ARTC), in partnership with the private sector.

THANK YOU