



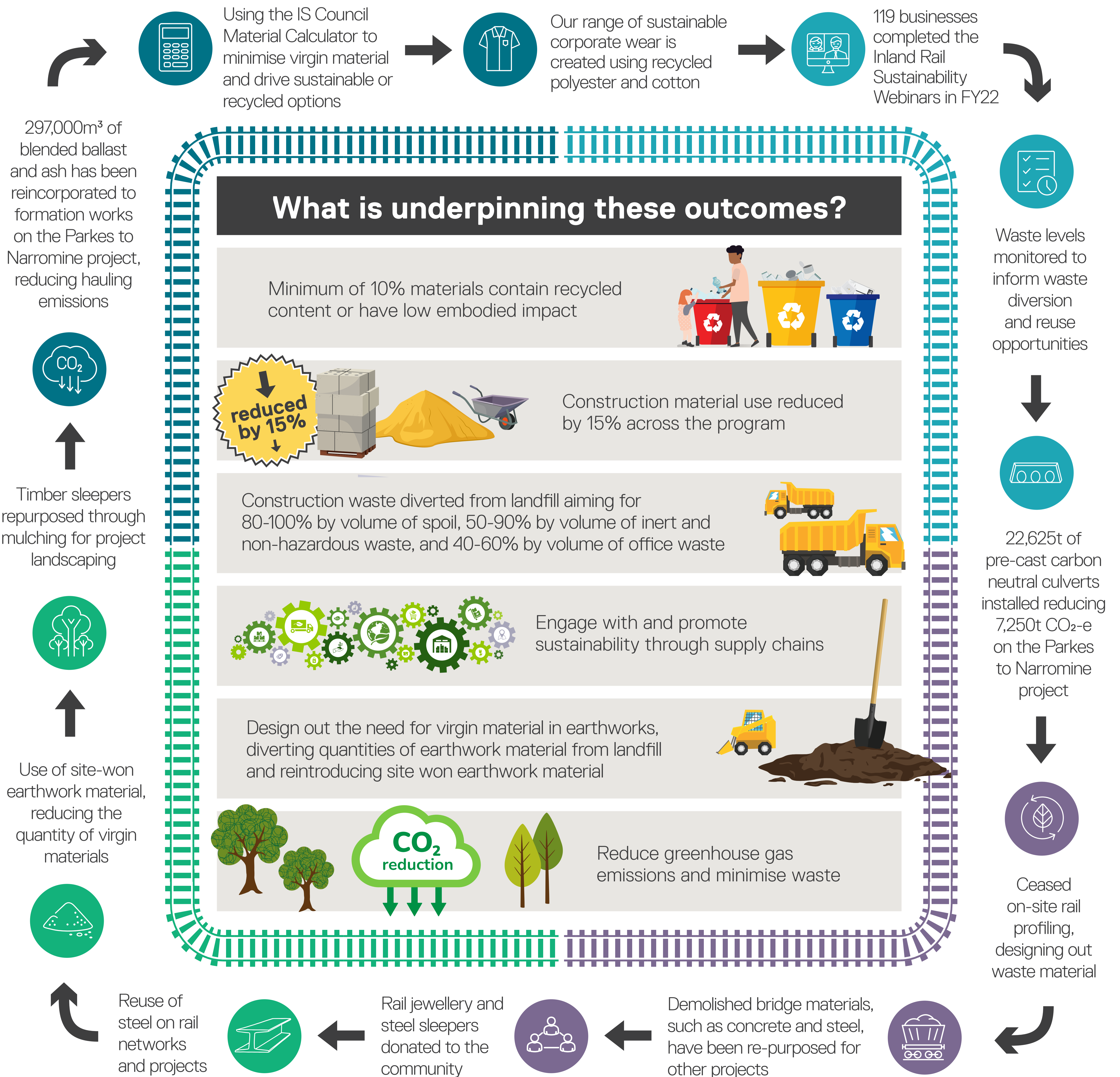
# Circular Economy at Inland Rail



## Reduce, repurpose and reuse

Inland Rail **prioritises circular economy principles** as a tool to embed sustainability across the project by:

- reducing the introduction of virgin materials throughout construction of the alignment;
- salvaging, repurposing and reusing materials from the existing rail corridor on the new alignment; and
- mitigating waste through new design processes.



### Authors

Meghan Cowling, Senior Sustainability Advisor, ARTC Inland Rail  
Ben Casey, Graduate Environment Advisor, ARTC Inland Rail