

An aerial photograph showing a newly constructed railway line cutting through vast, green agricultural fields. A blue and yellow train is visible on the tracks, moving away from the viewer. The landscape is flat and open, with scattered trees in the distance under a clear blue sky.

ARTC

INLAND  
RAIL

An Australian Government Initiative

# SOUTHERN DARLING DOWNS COMMUNITY CONSULTATIVE COMMITTEE

1 March 2023

# ACKNOWLEDGMENT OF COUNTRY

Inland Rail acknowledges the Traditional custodians of the land on which we work, and pay our respects to Elders past and present.



# AGENDA

- Welcome and Introductions
- Actions
- Department of Infrastructure update
- Inland Rail Program update
- Stakeholder Engagement update CCC Tour
- Social Performance update
- Business opportunities – ICN
- EIS update
- BHQ Update
- LORQ Update
- General business
- Questions from observers

# ACTIONS

NO	ACTIONS	ACTION BY	RESPONSE
1	Invitation to be extended to Jason Manttan to present on the ICN Gateway and business opportunities on Inland Rail.	ARTC	Presentation by Social Performance team member within March meeting agenda
2	Phoebe to provide additional information about regional groundwater data in response to a question from KL about potential impacts to boreholes (see page 19 for more information).	ARTC	See next slide

# RESPONSE TO ACTION ITEM 2

State databases have been searched (the DRDMW Groundwater Database) for all registered bores within the project region to give representative long-term groundwater level records dating back 25-30 years (see image).

This regional database information has been supplemented with data from groundwater bores drilled at the project site. This information will be presented in the revised draft EIS Groundwater Chapter.

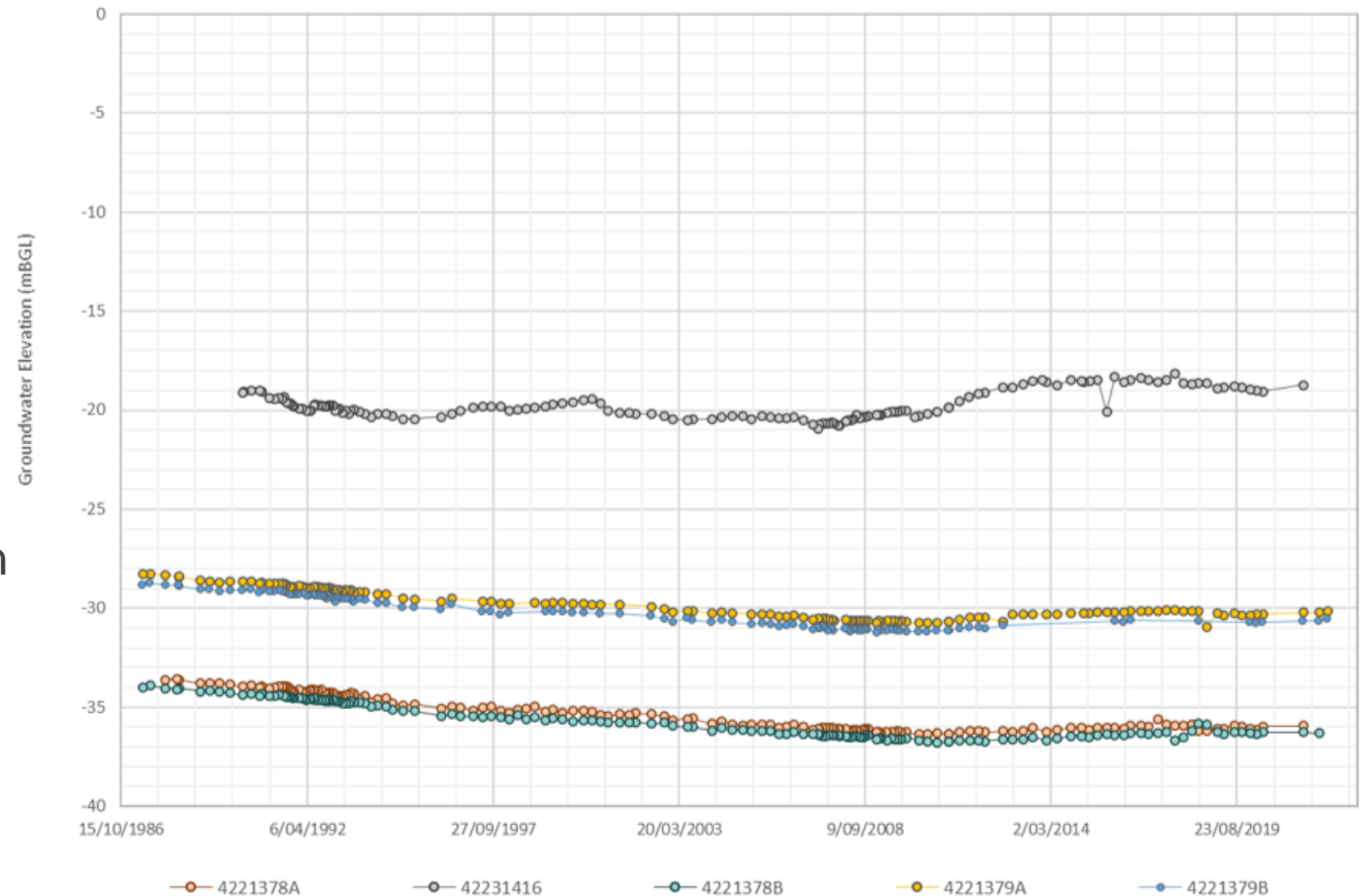


FIGURE 15.9 GROUNDWATER LEVELS WITHIN THE CONDAMINE ALLUVIUM

Figure note: Water level data sourced from the DRDMW groundwater database ● March 2022

# ACTIONS

No	ACTIONS	ACTION BY	RESPONSE
3	Question on notice for Hydrology about Turallin Road/Pine Creek area. (Does the modelling undertaken include the areas of Turallin Road, down towards the Pine Creek area – see page 16).	ARTC	Yes, the flood modelling includes Turallin Road and Pine Creek. This will be presented in the updated EIS reporting – it includes information on the catchment hydrology, hydraulic modelling, flood mapping, and discussion of the modelling findings.



# DEPARTMENT UPDATE

Dianne Loughnan

Inland Rail Regional Liaison Officer

Department of Transport, Regional Development and Communications and the Arts

# AUSTRALIAN GOVERNMENT INLAND RAIL REVIEW

- The Independent Review of Inland Rail by Dr Kerry Schott has been completed and the Australian Government is currently considering its recommendations.
- The Review has assessed the governance and program delivery approaches of the Inland Rail Program.
- The Review findings and recommendations will help inform the future delivery of Inland Rail.
- The Government intends to release Dr Schott's report and the Government's response as soon as it has been fully considered.
- The Review has considered the scope, schedule and cost of the program. It has also looked at options for the new Inland Rail intermodal terminals to be built in Melbourne and Brisbane, improved links to the ports of these cities and the Toowoomba to Gladstone Inland Rail Extension Business Case.





# INLAND RAIL PROGRAM UPDATE

Rob Smith

Senior Project Manager, ARTC Inland Rail

# INLAND RAIL PROGRAM APPROVAL STATUS

## Operational

- Parkes to Narromine

## Projects in construction

- Narrabri to North Star Phase 1
- Tottenham to Albury Phase 1 Tranche 1

## Projects completing EIS or equivalent

- North Star to Border
- Albury to Illabo
- Illabo to Stockinbingal
- Narrabri to North Star Phase 2
- Tottenham to Albury Phase 1 (both tranches)

## Projects requiring Review of Environmental Factors

- Stockinbingal to Parkes

## Projects preparing Revised Environmental Impact Statement (EIS) or equivalent

- **Border to Gowrie**
- Gowrie to Helidon
- Helidon to Calvert
- Calvert to Kagaru

## Project awaiting approvals pathway / on hold

- Kagaru to Acacia Ridge / Bromelton
- Tottenham to Albury Phase 2

# 2022 IN REVIEW

ARTC

INLAND  
RAIL   
An Australian Government Initiative



# CONSTRUCTION COMMENCES IN VICTORIA

- Major construction works commenced in Glenrowan, Victoria.
- ARTC marked the occasion with a community event in Glenrowan.
- To enable double stacked trains, ARTC must upgrade existing infrastructure at 12 sites.
- McConnell Dowell, the appointed contractor on the first four projects at Seymour, Barnawartha North, Glenrowan, and Wangaratta, have commenced preliminary site works and will move into major construction in the coming weeks.



# GOWRIE TO HELIDON (G2H) PROJECT UPDATE

## Environmental Impact Assessment

- Queensland Coordinator-General has released its formal request for additional information (RFI).
- Some geotechnical and environmental investigations continue as part of ongoing EIS studies.
- Updating the chapters for a revised draft EIS.
- Addressing submissions received from the public to inform the detailed design.

## Engagement

- Ongoing consultation with Toowoomba Regional Council.
- Working with local communities to discuss specific concerns.
- Notifying the community about the RFI and project updates.



# G2H UPCOMING EVENTS

## Social and Sustainability Workshop

- Thursday 16 March 2023
- Gowrie Junction Hall / online

## Gowrie to Calvert CCC Meeting

- Tuesday 18 April 2023
- Laidley Cultural Centre

## Flora, Fauna and Offsets Workshop

- Wednesday 19 April 2023
- Murphy's Creek Community Hall / online

**All are welcome to attend**



# NORTH STAR TO BORDER (NS2B) UPDATE

## EIS

- The NS2B Conditions of Approval were accepted by Inland Rail early February 2023
- The approval documentation was submitted to Minister for Planning in mid-February and was approved 21 February 2023.
- The project will be assessed by the Australian Government under the Environment Protection and Biodiversity Conservation Act 1999. A decision is expected in the coming months.
- This approval is for the NSW section only and does not include the section in Queensland.

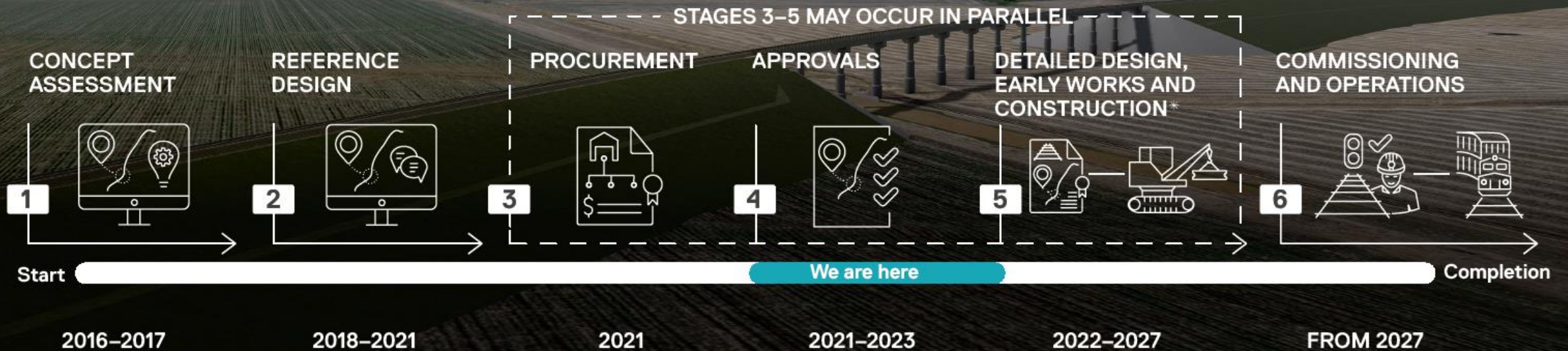
## Engagement

- Goondiwindi Regional Council – workers camp
- Ongoing ancillaries works engagement
- Property acquisition conversations.



# BORDER TO GOWRIE (B2G) PROJECT TIMELINE

## Border to Gowrie project timeline\*



\*Timelines are indicative and subject to change. Major construction will not start until statutory approvals have been received.

Visualisation of proposed grade separation at Chamberlain Road, Gowrie Mountain



# COLLABORATIVE FRAMEWORK AGREEMENT UPDATE

- BHQ Joint Venture are the preferred proponent for the North Civil Works Program between Whetstone and Gowrie
- Activities to be undertaken in parallel with obtaining environmental approvals
- While appointing preferred contractors prior to receiving planning approvals is common practice, major construction will not start until statutory approvals have been received
- Whetstone to NSW/Queensland Border will be delivered by the Central Civil Works Program by Laing O'Rourke Queensland



# UPCOMING SITE INVESTIGATIONS AND SURVEYS

- Ongoing geotechnical investigations – moving south from Millmerran to Whetstone (N1 and N4).
- Feature surveys – Owen Scrubb Road to Whetstone, including Bringalily State Forest.
- Investigation of potential borrow sites (quarry materials).
- Investigation of potential ground water monitoring bores and decommissioning of some existing ground water monitoring bores.



# STAKEHOLDER ENGAGEMENT UPDATE

Majella Doyle

Manager Stakeholder Engagement B2G & K2ARB, Inland Rail

# WHAT'S HAPPENED SINCE WE LAST MET

## Events and tours

- **Pittsworth Postle Gift**  
10 December 2022
- **Ecology Workshop**  
18 January 2023
- **CCC Tour**  
4-5 February 2023
- **Office of the Co-Ordinator-General (OCG) Tour**  
7-8 February 2023



## February drop-in sessions

- **Pittsworth Woolworths**  
1 February 2023
- **Brookstead Park**  
8 February 2023
- **Inglewood Bakehouse and Café**  
15 February 2023
- **Millmerran IGA**  
22 February 2023

# SPONSORING OUR B2G COMMUNITIES - 2023 AG SHOWS

## Millmerran Show (4 – 5 March)

- Saturday Night Entertainment Sponsor

## Pittsworth Show (10 – 11 March)

- Gold Sponsor: Show Hunter Events

## Inglewood Show (18 March)

- Platinum Sponsor: Dachshund Race Sponsor

## Toowoomba Royal Show (30 March – 1 April)

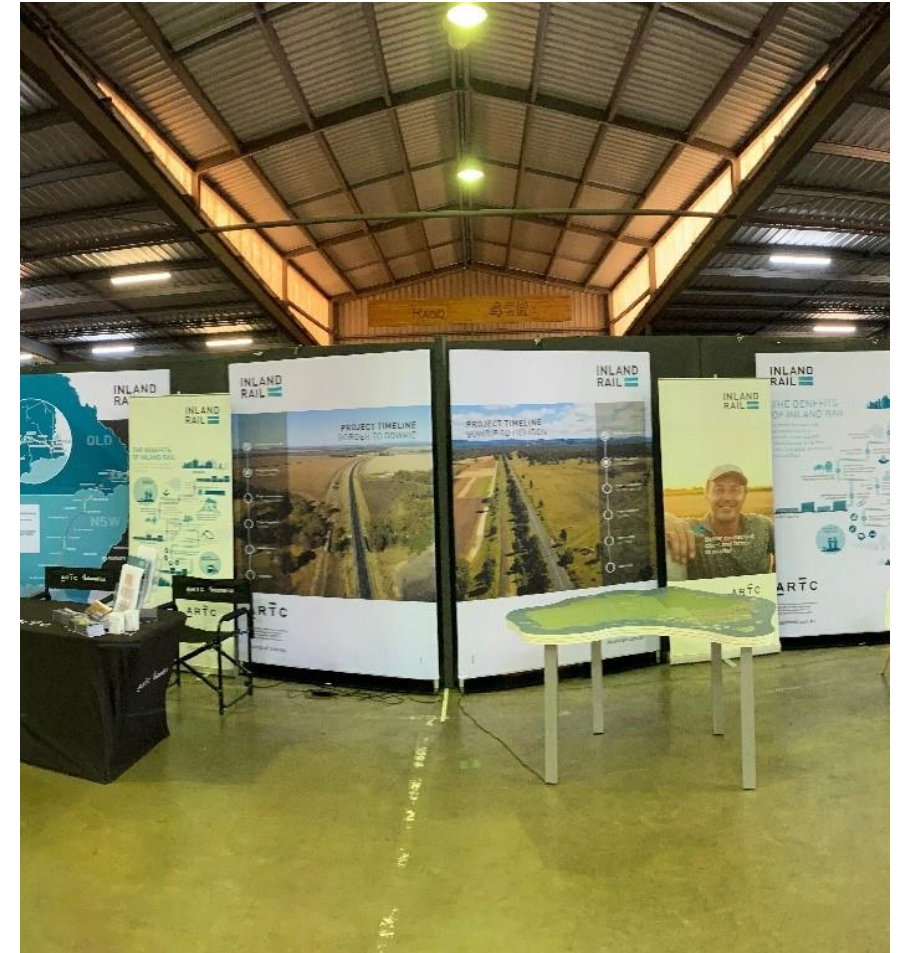
- Gold Sponsor, including Major Sponsor of 300mm Underhand World Title Woodchopping Event

## Goondiwindi Show (28 – 29 April)

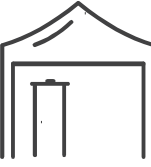
- Naming rights for Free Family Friday Sponsor

## FarmFest (7 – 9 June)

- Details to be confirmed



# DROP-IN SESSIONS BEFORE WE MEET AGAIN



## Biddeston

- Biddeston Store, 22 March 2023

## Pittsworth

- Woolworths, 5 April 2023

## Pampas

- Ampol Service Station, 12 April 2023

## Inglewood

- Bakehouse and Café, 19 April 2023

## Millmerran

- IGA, 3 May 2023

## Brookstead

- Brookstead Park, 24 May 2023



# HOW TO FIND OUT WHERE WE'LL BE IN 2023

- Keep an eye out for our local print ads
- Visit our website or drop by our office in Toowoomba
- Email or phone one of our team – business cards on the table by the door



# STAKEHOLDER ENGAGEMENT UPDATE

Naomi Tonscheck

Manager Stakeholder Engagement W2B, NS2B, N2NS P1 & P2

Inland Rail



# WHETSTONE TO THE BORDER – WHAT’S COMING UP!

- Goondiwindi workers’ accommodation consultation
- Whetstone temporary facility
- ‘Meet the Contractor events’ – Martinus Rail and Laing O’Rourke
- General consultation
- Goondiwindi office – 116 Marshall Street (Monday to Friday)
- Yelarbon CCC, Goondiwindi Interagency meeting and Inglewood CAN
- Landowner meetings – design conversations



# CCC TOUR INSIGHTS

Graham Clapham

Chair, Southern Darling Downs Community Consultative Committee

# CCC TOUR INSIGHTS



# SOCIAL PERFORMANCE UPDATE

Myf Jagger

Social Performance Principal, Inland Rail

# SOCIAL PERFORMANCE PROGRAM

ARTC recognises its responsibility to deliver and operate Inland Rail with the least social impact possible, while enhancing the benefits Inland Rail will deliver to the people of Australia at both a local and national scale

**1**

**WORKFORCE  
MANAGEMENT**

**2**

**LOCAL AND  
INDIGENOUS  
INDUSTRY  
PARTICIPATION**

**3**

**HOUSING AND  
ACCOMMODATION**

**4**

**HEALTH AND  
COMMUNITY  
WELLBEING**

**5**

**COMMUNITY AND  
STAKEHOLDER  
ENGAGEMENT**

**SOCIO-ECONOMIC OUTCOMES**

**SOCIAL  
PERFORMANCE**

**SOCIAL OUTCOMES**

# SUPPLY OPPORTUNITIES ON INLAND RAIL



Provide full, fair and reasonable opportunity for capable and competitive Australian entities to participate in the procurement of goods, services and equipment.

Use local suppliers, skills and labour, where possible, and ensure environmental, social and economic considerations are embedded in our procurement process.

Responsibly deliver and operate Inland Rail with the least negative social impact possible, while enhancing the benefits Inland Rail delivers to the people of Australia at both a local and national level.

ARTC

INLAND  
RAIL  
An Australian Government Initiative

## Community Benefits

## Narrabri to North Star Phase 1

September 2020  
to November 2022

2007

PEOPLE

have since worked on the  
project since September 2020



345

of whom are  
Indigenous

668 LOCAL  
RESIDENTS

have worked on the project

180 of whom are local  
and Indigenous

1,558 people employed  
for the 26 weeks or  
over for a minimum  
of 15 hours a week

SUSTAINABLE JOBS

156

TRADESPEOPLE  
EMPLOYED



210

WOMEN EMPLOYED



136

local businesses  
have supplied to  
the project

12

Indigenous  
businesses  
Australia-wide

\$218.5M total spend  
with local  
businesses

\$18.5M total spend with  
Indigenous businesses  
Australia-wide

# BE VISIBLE

- Prepare a business capability statement
- Attend industry events and briefings
- Make yourself known to Contractors
- Reach out to your existing clients
- Make connections
- Engage with local Chambers of Commerce and industry associations / professional bodies





# ICN GATEWAY – YOUR CONNECT TO OPPORTUNITIES

The screenshot displays the ICN Gateway website. At the top, a dark blue navigation bar contains the 'icngateway' logo, a home icon, and links for 'How It works', 'Success Stories', 'Pricing', 'Join Now', 'Login', and a search icon. Below the navigation bar, the main content area is divided into two columns. The left column is titled 'SUPPLIERS Find your next opportunity' and lists four bullet points: 'Create a profile for your business on our public directory', 'Search across billions of dollars of projects & get 'Project Alert' notifications', 'Get support from our experienced Industry Consultants', and 'Send unlimited expressions of interest'. A 'More for Suppliers' button is at the bottom of this section. The right column is titled 'PROJECT OWNERS Streamline Procurement' and lists four bullet points: 'We're the connection between major projects and the best suppliers in the region', 'We find the best-fit suppliers for your project while you focus on your core activities', 'Meet local procurement corporate responsibility demands', and 'Our consultants are here to support your team'. A 'More for Project Owners' button is at the bottom of this section. Below these sections is a large orange banner with a collage of images related to infrastructure and industry. On the right side of the banner is a search form titled 'What are you looking for?'. The form has two tabs: 'Projects' (selected) and 'Suppliers'. Below the tabs is a search input field with the placeholder text 'What kind of work or project?'. Underneath the input field are two dropdown menus for 'State' and 'Region', and a blue 'Search' button.

- <https://gateway.icn.org.au>
- Project opportunities
- Create a new or update an existing company profile
- Set up notifications for new projects/opportunities
- Search for projects or supply opportunities
- Register interest in work packages

# LOCAL BUSINESS AND WORKFORCE DEVELOPMENT

## Workforce Development Events

March, August and September 2022

- Supporting businesses to grow their workforce and raising awareness of available incentives and supports
- Locations: Goondiwindi, Toowoomba, Gatton, Ipswich, Beaudesert

## Business Capability Workshops

September to November 2022

- Targeted business support to “Be Visible” to Inland Rail Delivery Partners
- Locations: Goondiwindi, Inglewood, Pittsworth, Toowoomba, Ipswich, Beaudesert (including dedicated First Nations business sessions)



**Be Visible: Register your business**

# ONGOING SUPPORT

## Sustainability capacity

- Free business sustainability webinars
- Free one-on-one mentoring support

## Engagement with key industry groups and bodies

## Support and attendance at key industry events

## Pathway to Opportunities Program (2024 and beyond) to:

- help local businesses to learn what major project buyers and supply chains seek from suppliers
- develop the skills and capabilities to be competitive
- provide expert support (workshops & mentoring) to help businesses access new opportunities
- assist businesses map their own Pathway to Opportunities – focusing on multiple opportunities
- help local businesses build resilience and increase local content across a range of current and new opportunities and respond to national/international trends.

# WHO CAN YOU SPEAK TO FOR FURTHER ASSISTANCE

## Queensland

- Business Queensland  
<https://business.qld.gov.au>
- Goondiwindi Chamber of Commerce  
<https://goondiwindichamber.com.au>
- Toowoomba Chamber of Commerce  
<https://toowoombachamber.com.au>
- Toowoomba and Surat Basin Enterprises  
<https://tsbe.com.au>
- WorkSafe QLD  
<https://worksafe.qld.gov.au>

## National

- Australian Government - <https://business.gov.au>
- Australian Industry Group - <https://aigroup.com.au>
- Regional Development Australia - <https://rda.gov.au>
- First Nations Businesses and Social Enterprises
- Indigenous Business Australia  
<https://iba.gov.au>
- SEQ Indigenous Chamber of Commerce  
<https://seqicc.com.au>
- Social Traders  
[www.socialtraders.com.au](http://www.socialtraders.com.au)
- Supply Nation  
<https://supplynation.org.au>

# WHO WE'VE SPONSORED ALONG B2G IN 2022

History Pittsworth Group

Darling Downs Historical Railway Society Ltd

Goondiwindi & District Campdraft Association

Goondiwindi Bowls Club Inc

Goondiwindi Junior Rugby League

Goondiwindi Kindergarten

Inglewood Bowls Club

Inglewood Police Station

Inglewood Show Society

LifeFlight Foundation

Lions Club Millmerran inc

Millmerran State School P&C Assn

## 23

**projects supported  
By Inland Rail**



## \$74,810

**Provided to  
community groups**

Pittsworth and District Junior Rugby League Club

Pittsworth Leagues Club Inc

Queensland Country Women's Association

Southbrook Hall Association Inc

Southbrook Sports Club

The Child Writes Fund

Toowoomba Choral Society

Toowoomba Little Athletics

Toowoomba United RSL Sub Branch

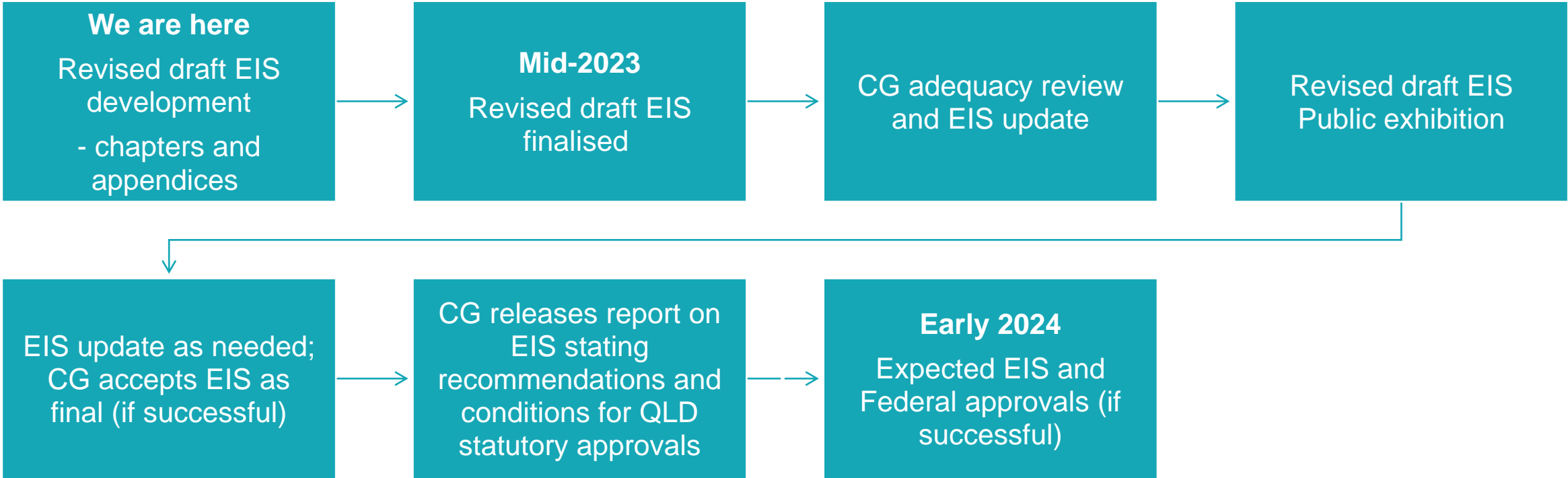
Toowoomba Valleys Rugby League Club Inc

# ENVIRONMENTAL IMPACT STATEMENT (EIS) UPDATE

Phoebe Moore

Senior Environment Advisor, Inland Rail

# ANTICIPATED EIS AND APPROVAL TIMING



# EIS UPDATE

- General status update
- Land resources
- Ecology
- Water resources
- Whetstone Material Distribution Centre





# ECOLOGY UPDATE

- Ecology information session held in Pittsworth 18 January 2023
- Approximately 50 people attended the session
- Opportunity for community input and feedback: information sheets, mapping resources, technical specialists
- What was covered:
  - B2G EIS update - Phoebe Moore
  - B2G Ecology update - Dr Vanessa Gorecki
  - Draft fauna movement and connectivity strategy- Dr Rodney van der Ree
  - Draft Koala Management Plan - Dr David Dique
  - USQ koala research - Dr Ben Allen



# BIODIVERSITY OFFSETS UPDATE

- Finalisation of Environmental Offset Delivery Plan
- First property purchased
- Canning Creek (2,800 ha)
- Ongoing negotiations with targeted properties



# LAING O'ROURKE UPDATE

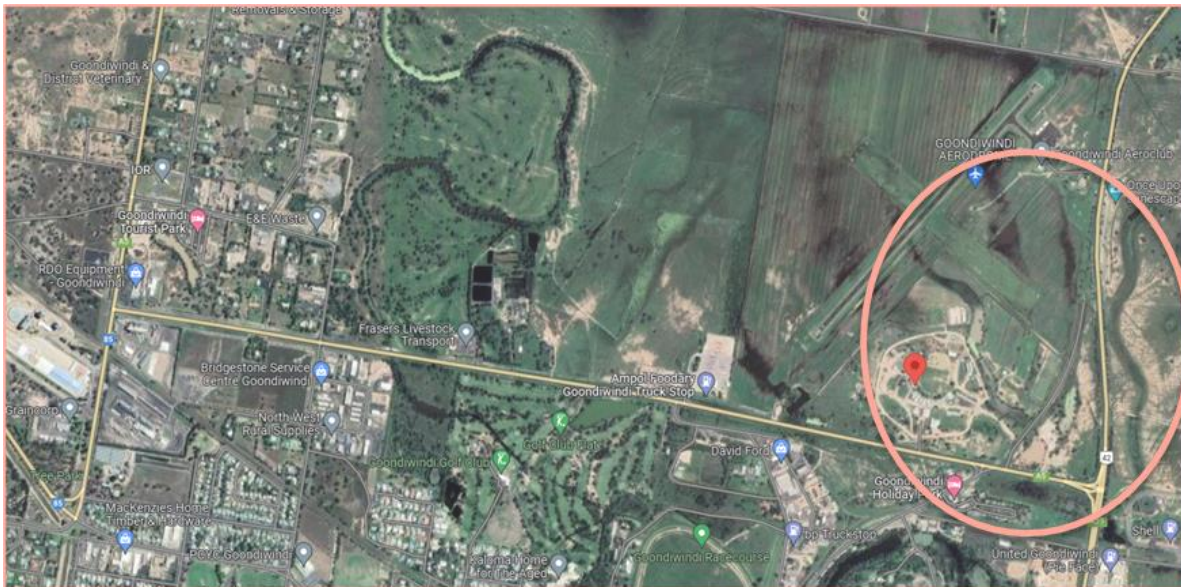
Yvonne Bowles

Project Leader, Laing O'Rourke

# PROPOSED GOONDIWINDI ACCOMMODATION CAMP

LOR awarded an early works contract to develop a DA for our proposed Goondiwindi Accommodation Camp

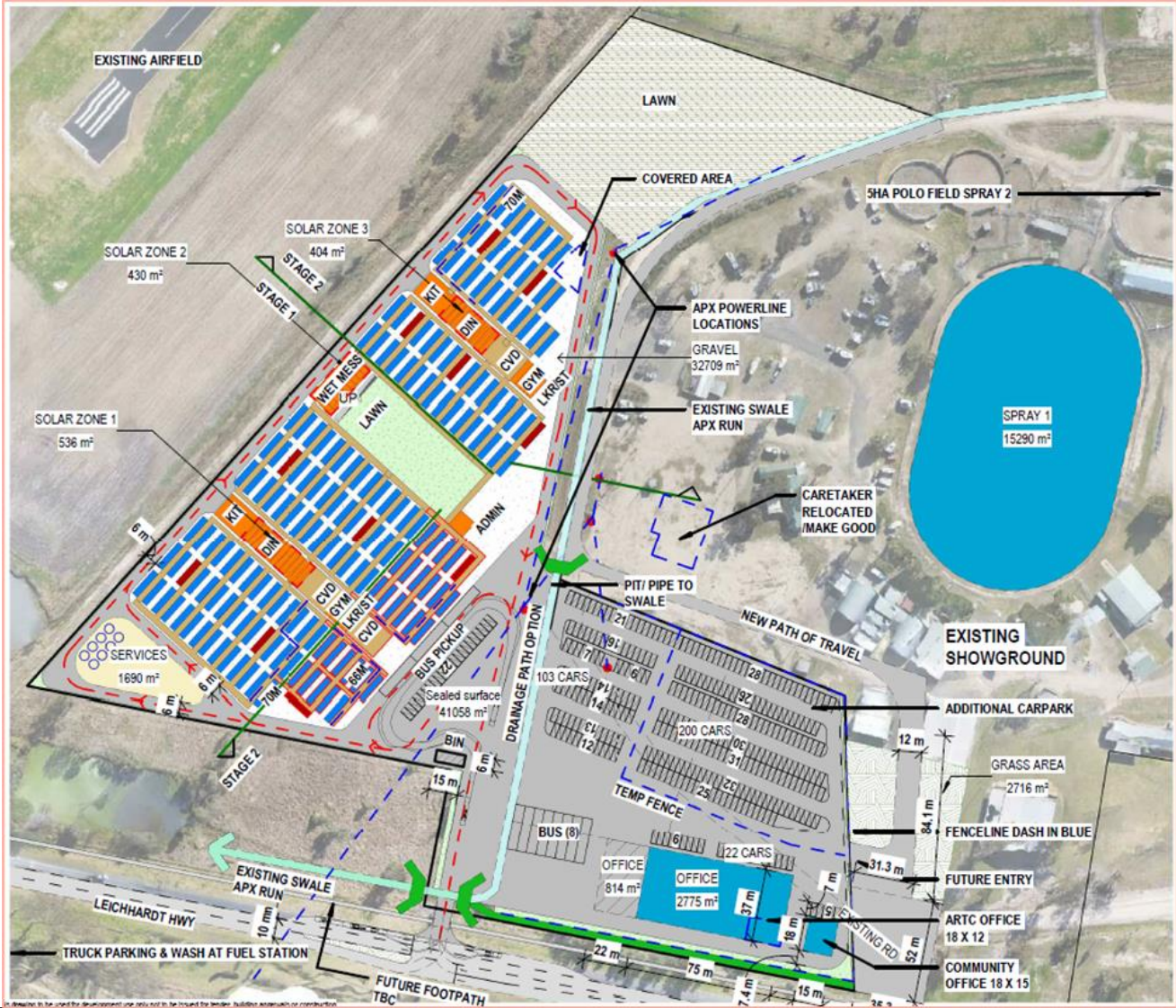
- Conducting some site investigations to inform design (survey, geotechnical, traffic)
- Developing preliminary design for the civil works and camp buildings
- Meeting with ARTC, Council and other key stakeholders during DA development
- Engaging local Goondiwindi town planner (SKM QLD) to assist
- Expected DA submission date by 16 May 2023



## Consultation to date

- Goondiwindi Regional Council
- Goondiwindi Agricultural and Pastoral Society
- Goondiwindi Emergency Services (Police and Ambulance)

# CONCEPT DESIGN FOR GOONDIWINDI CAMP



# GENERAL SITE INVESTIGATIONS

## C3 – Border to Kurumbul (Macintyre River Floodplain)

- Site survey, geotechnical and cultural heritage investigations – expect site presence from April 2023 through to end of the year

## C4 – Kurumbul to Whetstone

- Design optioneering – between March and June 2023
- Site survey, utility and geotechnical investigations – expect site presence between June and December 2023



# BHQ JV UPDATE

Warren Crowther

Program Manager, Bielby Hull QBirt (BHQ) Joint Venture (JV)

# GEOTECHNICAL INVESTIGATIONS / SURVEYS UPDATE

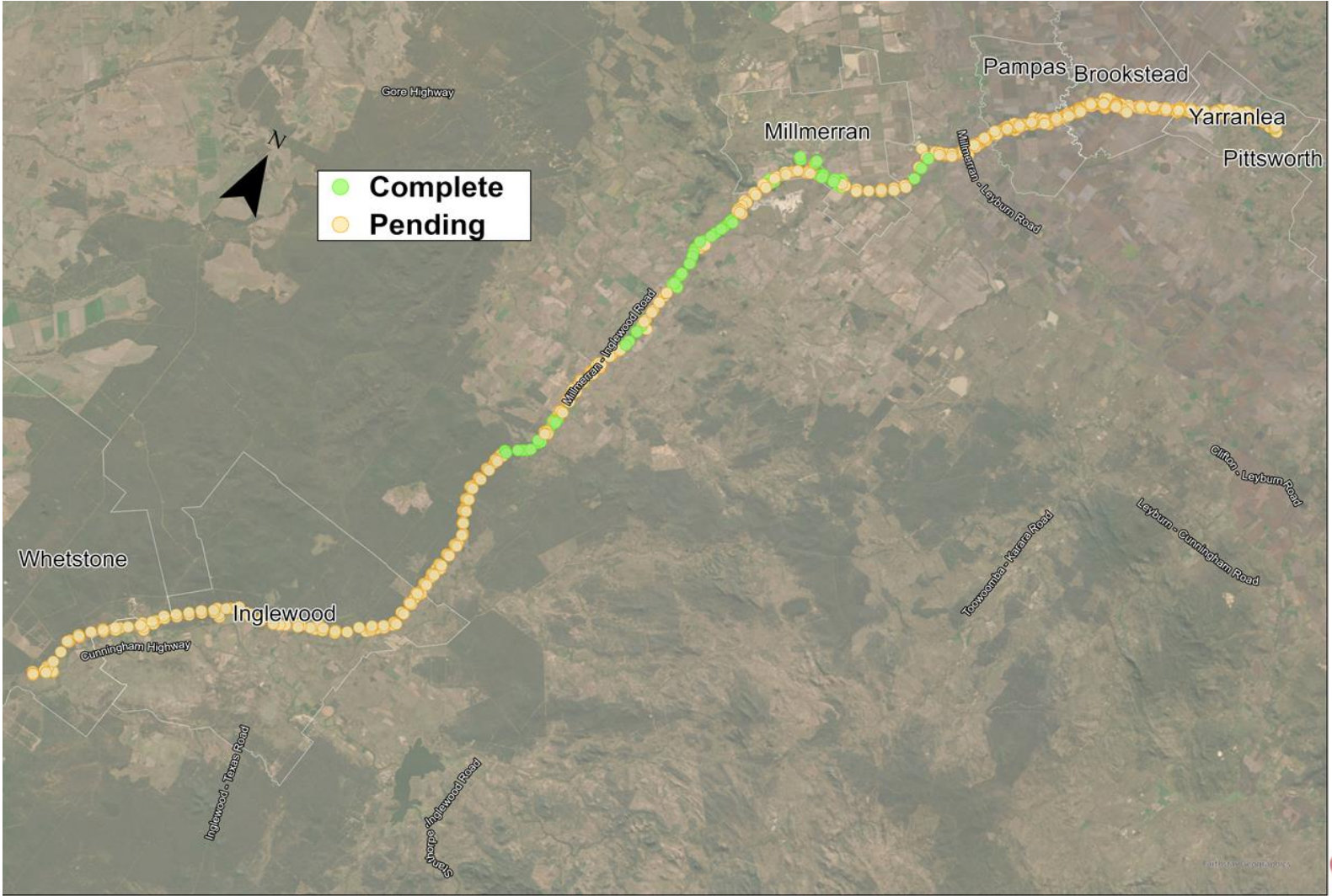
- Test pit, borehole geotechnical and survey crews have been working predominantly between Toowoomba and Pittsworth to date
- Crews are currently continuing works between Millmerran and Inglewood
- BHQ JV have established a base (including a mobile caravan) at 10 Saleyards Road, Millmerran to support the crews



Yarranlea to Gowrie Junction (N3) \*as at February 2023



# GEOTECHNICAL INVESTIGATIONS / SURVEYS UPDATE



Whetstone to Yarranlea (N4, N1, N2) \*as at February 2023



# SITE INVESTIGATIONS

ORIGINAL PLAN	CURRENT PLAN	CURRENT COMPLETE
<p>231 investigations (test pits and boreholes)</p> <p>50 landowners</p>	<p>155 investigations (test pits and boreholes)</p> <p>39 landowners</p>	<p>39 investigations (test pits and boreholes)</p> <p>22 landowners</p>
<p>335 survey investigation sites</p>	<p>315 survey investigations</p>	<p>126 survey investigations</p>

\*Quantities noted for entire project.



# WEED AND SEED / BIODIVERSITY MANAGEMENT

- There are strategies and work practices in place to manage biosecurity and environmental obligations
- Inland Rail's Environment and Sustainability Policy outlines the projects commitment to practical sustainability measures
- BHQ JV manage weed and seed / biodiversity across the Project inline with these strategies and work practices / policies



## Biosecurity

- ARTC's Biosecurity Management Strategy is continuously reviewed to ensure strategies are relevant and fit for purpose
- Many of the standard practices are already applied such as vehicle wash downs, minimising travel off road, and robust pest and weed hygiene practices

## Pests and weeds

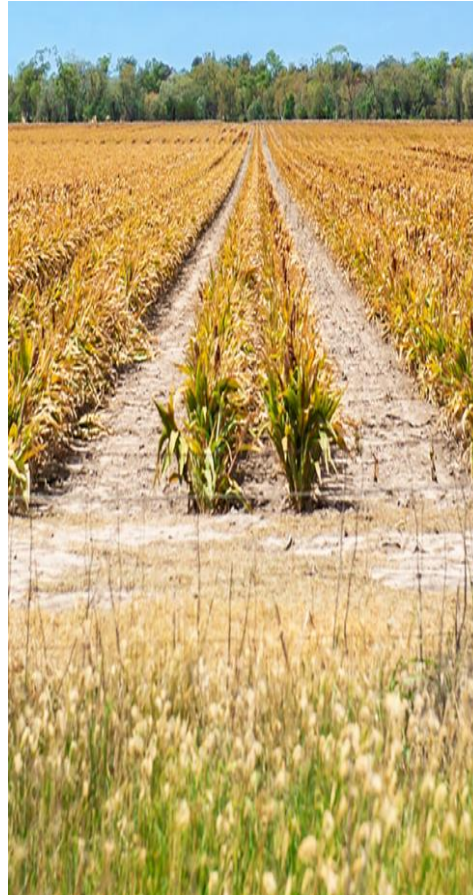
- ARTC's pest and weed hygiene management strategies align with state regulations
- Any work conducted on the Inland Rail project is in accordance with relevant legislation and any agreements with state / local governments and landowners



# INLAND RAIL WEED AND SEED / BIODIVERSITY MANAGEMENT

## Road reserves and private properties:

- Understanding landowner and relevant authority requirements are determined prior to accessing a road reserve / private property
- Land Access Agreements (LAA's) are in place for landowners who agree to the team accessing their property
- Access to private properties along the alignment is vital in order to understand the conditions and how best to design and construct the railway



## Weed hygiene:

- Weed hygiene practices are followed at all times
- These include cleaning clothes, shoes, heavy machinery, vehicles, tools and wheeled loaders
- Clean down procedures are in place to help remove weed seeds, soil and other foreign matter
- Biosecurity requirements are also checked through state regulator websites
- Third party certified companies may be contracted to clean vehicles and equipment where required



# WEED AND SEED MANAGEMENT PROCESS

1. Prior to works commencing, an initial desktop assessment to identify currently mapped flora, fauna, weeds and waterways is undertaken by an Environmental Scientist.
2. On site controls are determined to minimise environmental harm based on the location of the investigation works.
3. Implement BHQ JV's weed and seed procedure, which aims to avoid the spread of weeds by ensuring all machinery and vehicles are inspected and cleaned following completion of works on that property. This ensures all machinery and vehicles are clean prior to entering the next property.
4. Our process is based on the '**Come Clean, Go Clean**' process from the oil and coal seam gas industry.



# PROCUREMENT OF CAMP FACILITIES

- Intend to start engaging with camp providers through a tender process in the coming months
- Addressing the issues for housing and accommodation
- The locations and sizes of the camps are still being determined
- Can take 1-2 years for fabrication of camp rooms and facilities



*Camp example only.*



# GENERAL BUSINESS

# QUESTIONS



# AGENDA (IDD)

- Welcome and Introductions
- Actions
- Department of Infrastructure update
- Inland Rail Program update
- Stakeholder Engagement update CCC Tour
- Social Performance update
- Business opportunities – ICN
- EIS update
- BHQ Update
- General business
- Questions from observers

# ACTIONS (IDD)

No	ACTIONS	ACTION BY	RESPONSE
1	Provide a response on whether any leaching of lime or other contaminants that has caused environmental concerns during construction in NSW with the flooding that has occurred.	ARTC	“There were no areas on the project where lime leaching or other contaminants have caused any environmental concern or harm during the floods.” <b>Justin Bate, HSE Superintendent</b>
2	Provide the number of hectares of the offsets property. Response provided in meeting: 2,800ha	CLOSED	Response provided in meeting: 2,800ha
3	Share Inland Rail’s Foot and Mouth policy and protocols with the Committee	ARTC	Emailed to committee
4	Provide a cumulative look at work Inland Rail is involved in and what the local spend is. MJ said the KPIs are commercial in confidence and unable to be published and will provide more details on ARTC’s local spend KPIs for the contractor at the next meeting.	ARTC	Update to be presented during the March 2023 meeting