

ARTC

INLAND  
RAIL

An Australian Government Initiative

## Protecting the Five-clawed Worm skink

Did you know that, during Inland Rail's construction, we have identified habitats of the threatened Five-clawed Worm skink species along sections of the alignment between Narrabri and North Star.

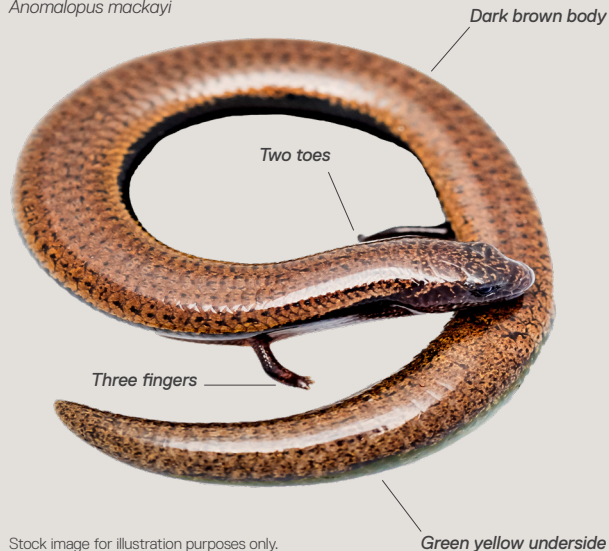
This skink is a burrowing lizard with a worm-like body that can grow up to 270mm long. It tends to be dark brown with a green-yellow underside and features short limbs with three fingers and two toes.

It generally inhabits grassy white box woodlands, river red gum, Coolibah, and Bimble box woodland on moist, deep cracking clay soils and surfaces under fallen timber and leaf litter.

**See overleaf how you can protect this threatened species.**

## Five-clawed Worm skink

*Anomalopus mackayi*



## How you can help

As landowners adjoining the Inland Rail alignment in the region, you can help us protect this species, ensuring its long-term survival.

We encourage landowners to make every effort not to disturb these habitats when improving their properties and ARTC will continue to monitor known sites once construction is completed.

## More information

To learn more about the threatened Five-clawed Worm skink, visit the NSW Government's Office of Environment and Heritage website at [inlandrail.info/3mlqGtn](https://inlandrail.info/3mlqGtn)



*The Five-clawed Worm skink can grow up to 270mm long*



To learn more about the threatened Five-clawed Worm skink, scan this

**QR code**