

Inland Rail Skills Academy

Investing in communities on the Inland Rail alignment, through education and training, creating a local supply of goods, services and future workers.

SME CAPACITY BUILDING & BUSINESS OPPORTUNITIES

First Nations opportunity

59 First Nations businesses upskilled
 equal to **14%** of all upskilled businesses

707 First Nations people employed with Inland Rail
410 local to Inland Rail alignment

Upskilling local businesses

57 workshops across NSW & Qld
164 mentoring sessions

398 businesses upskilled to work on a major project

14% First Nations businesses



Connecting local businesses with programs to grow workforce

VOCATIONAL TRAINING



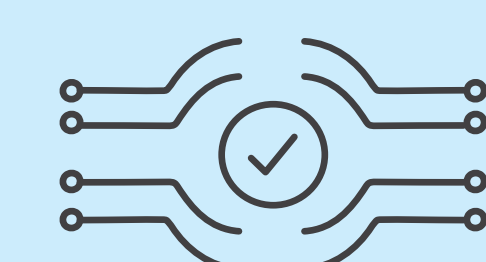
Confined spaces competency in training for Clontarf Foundation students held in Wagga Wagga, NSW, October 2023

287 work-ready individuals

142 First Nations people
30 females

208 in civil construction courses
49 in rail industry courses
30 other regional priority courses

STEM EDUCATION & SCHOLARSHIPS



10,624

students engaged in STEM activities which aim to raise awareness of the types of careers required to build a major project like Inland Rail



Participants of the Inland Rail Skills Academy Certificate II Civil Construction held in Boggabilla, NSW, November 2022



Supporting development of STEM skills needed for our workforce

The Inland Rail Skills Academy

The Inland Rail Skills Academy (the Academy) partners with education and training providers to deliver programs that upskill local people and businesses. Through the Academy, Inland Rail is creating opportunities, during construction, for the communities and regions along the alignment, including training and skills development, education, and employment. Partnerships with The Clontarf Foundation, NSW TAFE and others create work-ready cohorts to connect with employment opportunities offered by Inland Rail contractors.

Authors

Jane Roberts Program Social Investment & Inland Rail Academy Principal
Peta Tucker Social Performance and Sustainability Manager
Sarah Robertson Social Performance Reporting and Assurance Analyst

inlandrail.com.au

