

Narromine to Narrabri

The Narromine to Narrabri (N2N) section comprises 306km of new rail corridor and track. When complete, it will enable freight trains to connect with the section of Inland Rail under construction between Narrabri and North Star and the Parkes to Narromine section that is already complete and supports freight transport to Adelaide and Perth.



Laying of sleepers on the Parkes to Narromine section

N2N project year in review

It's been a busy year behind the scenes, with a focus on work that supports the approval process, refinement of project design and rail corridor acquisition.

2023 highlights include:

-  Achieved NSW Government environmental approval (February)
-  Progressed along the Australian Government approvals pathway working closely with the Department of Climate Change, Energy, the Environment and Water
-  Completed 840 hrs of Geotechnical Investigations in Narrabri
-  Commenced cadastral surveys at 85 alignment properties
-  Completed 130+ days of ecology surveys
-  Supported 13 local agricultural shows
-  Improved regional mobile phone coverage by delivering two new mobile base stations in Mount Tenandra and Kickabil, in partnership with Telstra

Local business spend tops \$390 million across Inland Rail

Nearly \$400 million has been spent with local companies across the entire Inland Rail alignment since construction started in 2018, with around \$85million spent in the last year alone.

Supply contracts worth more than \$390 million have been awarded to nearly 430 local companies across the Parkes to Narromine, Beveridge to Albury, Narrabri to North Star Phase 1 and Stockinbingal to Parkes sections.

During this period, Inland Rail has engaged also spent nearly \$40 million with 25 First Nations businesses.

Closer to home, on the recently completed Narrabri to North Star Phase 1 section, \$244 million was spent with 137 local businesses and more than \$23 million was spent with 13 First Nations businesses.

These local companies have provided a range of services including office fit out, accommodation and catering, workforce training, equipment supply, earthworks, signage, waste services, hardware supplies, plant and equipment hire, electrical and plumbing services and fencing.

Approvals update

We're now in the final stages of our Australian Government approvals pathway. We've responded to requests for additional information and discussed draft conditions of approval with the Department of Climate Change, Energy, the Environment and Water (DCCEEW). A decision from DCCEEW is expected in early 2024.



Inland Rail Narrabri office

Major construction complete on Narrabri to North Star Phase 1

On 27 October, project staff, civic leaders and other key stakeholders came together in Milguy to mark the official completion of major construction on the Narrabri to North Star Phase 1 section.

More than 2,150 staff were involved in upgrading 176km of track in existing rail corridor, using 290,900 sleepers and over 1.1 million rail clips. Seven bridges were upgraded and five new crossing loops were installed.

The day also marked the opening of the line between Camurra and North Star, the final stage to be handed back to the track operator, Australian Rail Track Corporation (ARTC). This means trains can run all the way to North Star after two and a half years of construction.

Upgrading the old 80km section of track north of Moree has unlocked plenty of benefits for grain growers and industry. This section is now much safer and freight trains can travel faster after servicing grain handling facilities at Milguy, Croppa Creek and North Star.

For one primary producer, Boolah Farms, the upgrades also delivered a new ramp near the mainline in Milguy, allowing grain loading direct from the farm and onto the train.

“You can’t get more efficient than that,” said Stuart Tighe of Boolah Farms, speaking at the Phase 1 opening celebration.

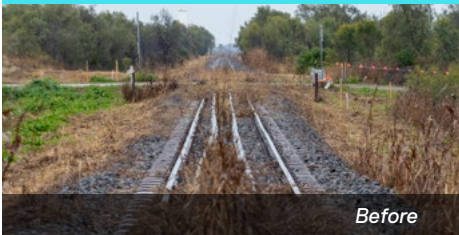


It’s a very exciting time to be able to load these trains directly from the field and grain storages. The efficiencies this brings to the supply chain, to be able to move large volumes safely, as well as the cost savings are significant.”

Stuart Tighe,
Boolah Farms



Looking south across Gil Gil Creek Road level crossing in Crooble



Before



After



Season's Greetings

As the end of the year fast approaches, we wish our alignment communities a safe and relaxing festive season.

Our Narrabri office will be closed from Friday 22 December 2023 and will reopen at 9am Tuesday 2 January 2024.

Our 1800 732 761 community infoline will remain open during this period if you have any enquiries.

GI in Narrabri

Geotechnical Investigations (GI), which have been occurring since mid-October on the alluvial plain between the Namoi River and Narrabri Creek, wrap up this week for a short festive season break.

Crews didn't encounter anything unexpected (phew) with samples confirming soil layer widths and rock depths. This is essential information that will help refine the design of the Narrabri viaduct.

Inland Rail engineers and our GI contractor Macquarie Geotech return on 8 January to finish the borehole drilling program in the Narrabri area. The team will then head south to complete similar investigations near Narromine.

Coming up on the N2N project in 2024

After a short break, we will return in early 2024 to continue progressing the N2N project.

Land access and acquisition discussions will be a priority as we look to secure the Inland Rail corridor along the N2N alignment.

We'll also be working with Telstra to install a third new mobile base station at Black Hollow, 60km east of Coonamble.

Key upcoming technical investigations and site studies in 2024 include:

- Biodiversity surveys
- Cultural Heritage assessments and focused First Nations engagement
- More Geotechnical Investigations in the rail corridor
- Utility field surveys
- Baseline monitoring for groundwater, air and surface water
- Borrow pit geotechnical and biodiversity investigations
- Progress refinement of the project design.



GI drilling rig on the alluvial plain in Narrabri

Want to know more? We are committed to working with property owners, communities, state and local governments as a vital part of our planning and consultation work, and we value your input. If you have any questions or comments, please let us know.

p 1800 732 761
e inlandrailnsw@artc.com.au
w inlandrail.com.au/n2n